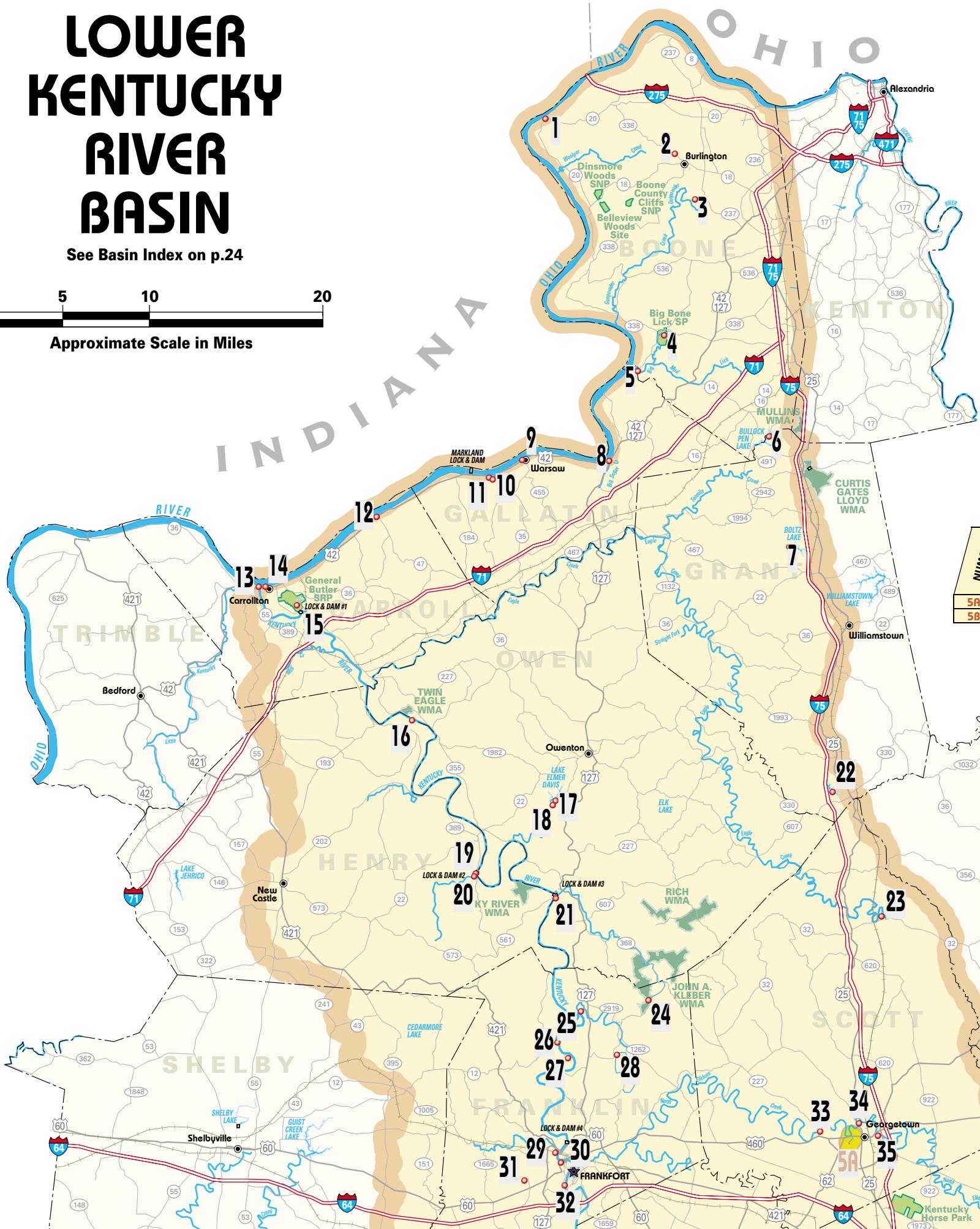
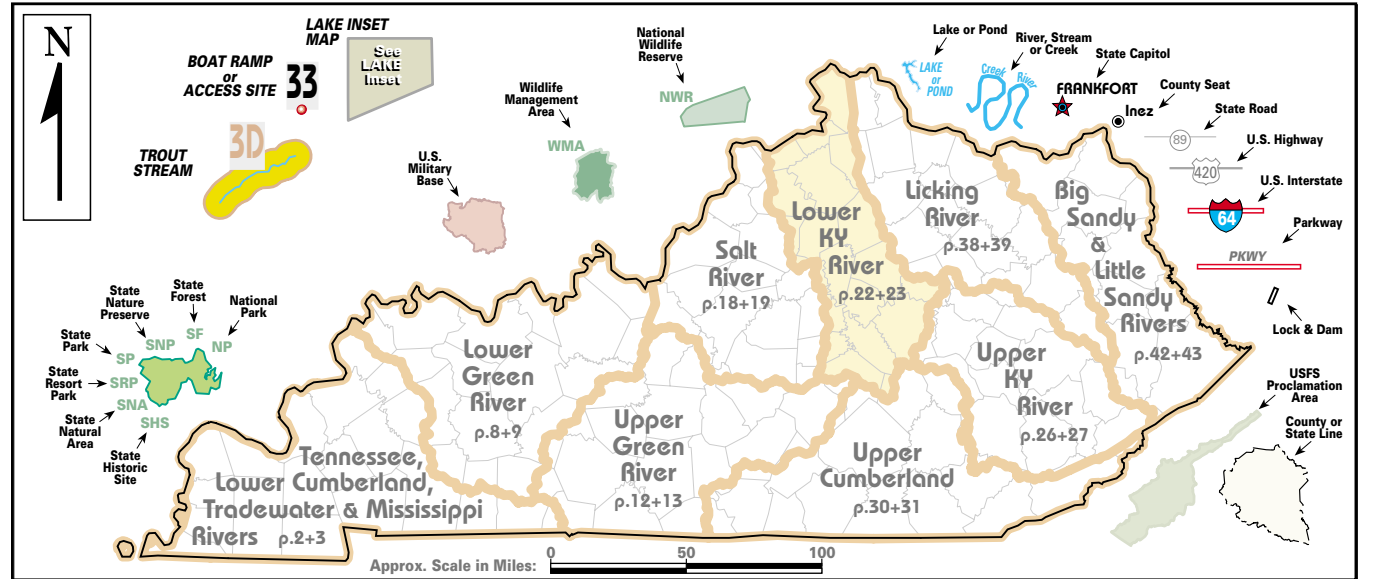
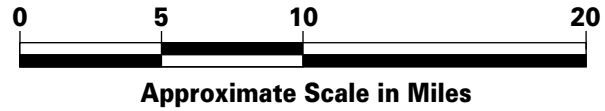


LOWER KENTUCKY RIVER BASIN

See Basin Index on p.24



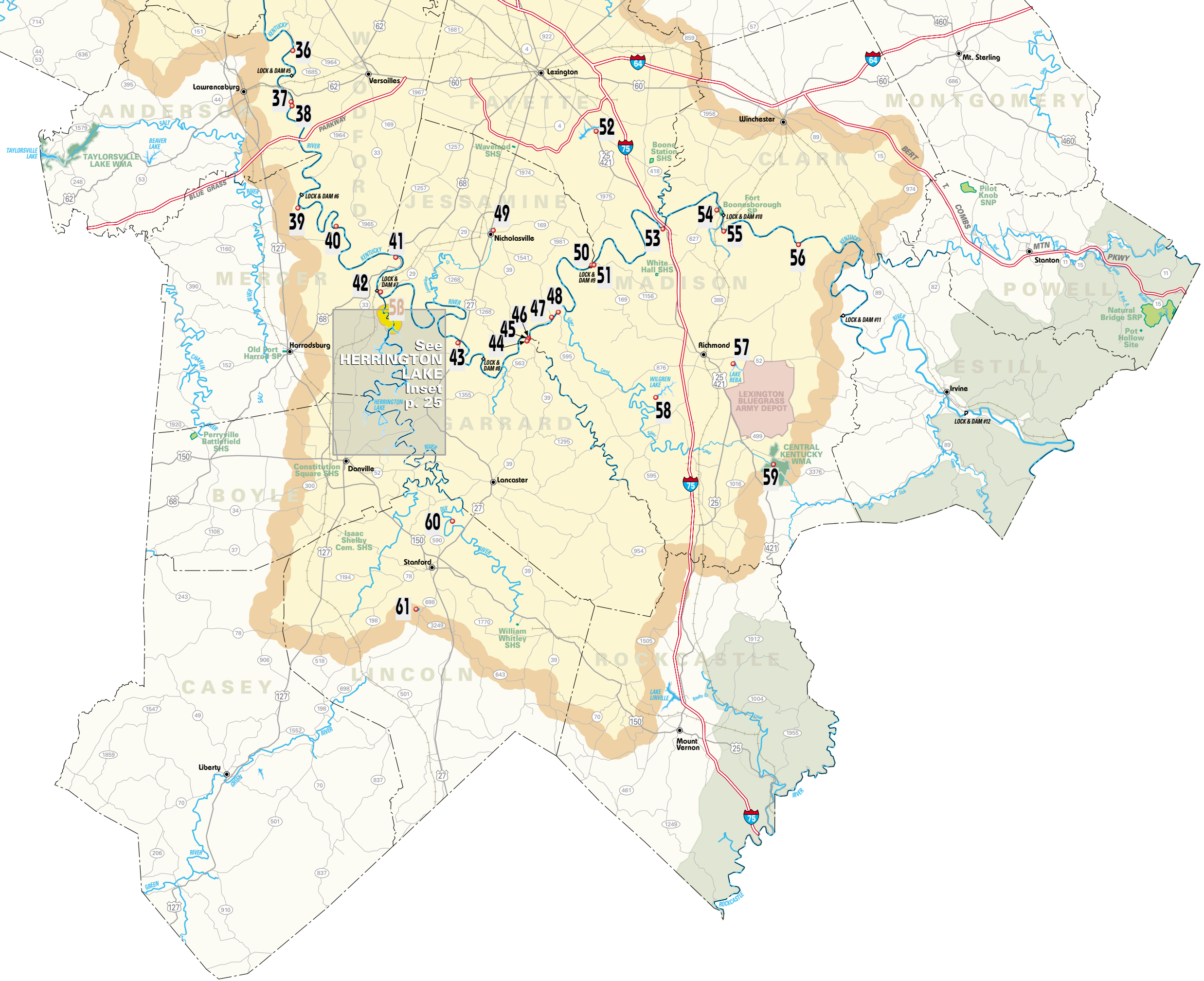
Trout Stream Index

NUMBER	STREAM NAME	LENGTH	LOCATION	TROUT SPECIES
5A	Royal Springs	0.7 Mi.	Mouth to Georgetown Water Treatment Plant	Rainbow
5B	Herrington Lake Tailwater	2 Mi.	Dam to mouth of Dix River	Brown/Rainbow

Ohio River Fisheries

By agreement, bordering states will honor Kentucky's sport licenses along their common borders on the **mainstem** of the Ohio River, excluding tributaries and embayments.

See **OHIO RIVER FISHING GUIDE** for all Ohio River access sites



Lower Kentucky River Basin Index

See Map on p.22+23

Site	Water Body	River Name	Directions	Shoreline	Boat Ramp	Ramp Type	Ramp Surface	Launch Lanes	Parking	Capacity	Ramp Fee	Courtesy Dock	Handicap Pier	Plenic	Camp	Restrooms	Marina
1	Ohio River	Petersburg Boat Ramp	I-75 N of Florence; I-275 W to Exit 11; left on Hwy 8 to Petersburg	●	●	A	P	S	U	< 25	\$						
2	Inglewood Pk. Lake	Inglewood-Idlewild Park Lakes	I-75/71 N of Florence; KY 18 W (Exit 181); KY 18 W to Burlington; right on KY 338 (1 mile). Note: 1.1-acre lake; opens in Year 2000	○					U	< 25	Free		○				
3	Ernst Lake		KY 18 W of Florence; left on KY 237; right on Camp Ernst Road. Note: 22-acre lake	●	●	A	P	M	U	< 25	Free	Yes	●		●		
4	Big Bone State Pk. Lake	Big Bone SP	US 127 S of Florence; right on KY 338 to Big Bone Lick State Park. Note: 7-acre lake	●					U	< 25	Free		◆	◆	◆		
5	Ohio River	Big Bone Creek	US 127 S of Florence; right on KY 338; left on Hwy 1925 to boat ramp	●	●	A	P	M	P	50 +	\$				◆	◆	◆
6	Bullock Pen Lake		I-75 N of Williamstown to Exit 166; Hwy 2363 W; left on Violet Road. Note: 134-acre lake	●	●	B	P	S	U	< 25	\$		○	●	○	●	
7	Boltz Lake		I-75 N of Williamstown to Dry Ridge (Exit 159); KY 22 W; right on KY 467; right on Mt. Zion Road; right on Boltz Lake Road. Note: 92-acre lake	●	●	B	P	S	P	< 25	Free		◇	◆	◆	●	
8	Ohio River	Big Sugar Creek Ramp	US 42 E of Warsaw (5 miles) at US 127 junction	●	●	A	P	M	P	< 25	Free						
9	Ohio River	Warsaw City Ramp	Located in the City of Warsaw	●	●	A	P	S	U	< 25	Free		●	●	○		
10	Ohio River	Craigs Creek Ramp	US 42 W of Warsaw; cross Craigs Creek; turn at first left	●	●	A	P	M	P	26-50	Free					●	
11	Ohio River	Craigs Creek Marina Ramp	US 42 W of Warsaw; Craigs Creek Marina on left	○	○	B	P	S	P	< 25	\$	Yes	◆		◆	●	
12	Ohio River	Ghent Ramp	US 42 E of Carrollton to Ghent; left on Hwy 47	●	●	B	P	S	U	< 25	Free						
13	Ohio River	Carrollton Ramp	Main Street in Carrollton (end of road)	●	●	B	P	S	U	< 25	Free						
14	Ohio River	Point Park Ramp	US 42 in Carrollton at Point Park; confluence of KY and Ohio rivers	●	●	A	P	M	P	50 +	Free		●		◆		
15	General Butler SP Lake	General Butler SP	KY 36 E of Carrollton; KY 227 S to park. Note: 29-acre lake; bank fishing only	●					P	50 +	Free		●	●	●		
16	Kentucky River	Twin Creek Ramp	KY 22 W of Owenton to Gratz; N on KY 355 to management area	●	●	B	P	S	P	< 25	Free						
17	Elmer Davis Lake	Boat Dock Ramp	KY 22 W of Owenton; left on Hwy 1670. Note: 149-acre lake	●	●	B	P	S	U	< 25	\$	Yes	○	●	○	○	
18	Elmer Davis Lake	Dam Ramp	US 127 S of Owenton; right on Elmer Davis Road. Note: 149-acre lake	●	●	B	P	S	P	< 25	Free						
19	Kentucky River	Lock #2	US 421 N of New Castle; right on KY 202; right on Hwy 389 to Lockport	●					U	< 25	Free						
20	Kentucky River	Six Mile Creek Ramp	US 421 N of New Castle; R. on KY 202; R. on Hwy 389 to Lockport; L. onto Lock and Dam #2 road	●	●	B	P	S	U	< 25	Free						
21	Kentucky River	Monterey Ramp	US 127 S of Owenton to Monterey; R. on Point of Rock Road; first R. just below Lock and Dam #3	●	●	B	P	S	U	< 25	\$		◇	◇	◇		
22	Corinth Lake	Corinth Lake Ramp	I-75 S of Williamstown to Exit 144; Hwy 330 E; US 25 N (1 mi.); L. on Ragtown Rd. Note: 96-acre lake	●	●	B	U	S	U	< 25	\$					●	◇
23	Eagle Creek	Big Eagle Creek Ramp	US 25 N of Georgetown; right on KY 32 to Sadieville; left on Hinton Road	●	●	B	P	S	U	< 25	Free						
24	Kleber WMA Pond	Kleber WMA	US 127 N from Frankfort; right on Hwy 1262 (Sullivan Lane); left on Hwy 1707; left on Ridge Road. Note: no boats allowed	●					U	< 25	Free						
25	Kentucky River	Still Waters Boat Ramp	US 127 N of Frankfort (10 miles); cross Elkhorn Cr. bridge; left to Still Waters Marina. Note: 2 ramps	●	●	B	P	S	U	< 25	\$		◆	◆			
26	Kentucky River	Steele Branch Ramp	US 127 N of Frankfort (6.5 miles); left on Steele Branch Road to river	●	●	B	P	S	P	< 25	Free						
27	Kentucky River	Kentucky River Campgrounds	US 127 N of Frankfort (6.5 miles); L. on Steele Branch Rd. Note: Only available to campground users	◆	◆	B	U	S	U	< 25	\$		◆	◆	◆		
28	Elkhorn Creek	Sullivan Lane WMA	US 127 N from Frankfort; right on Owenton Road (old US 127); right on KY 1262 (Sullivan Lane Road) (1 mile) on right	●	●	C			U	< 25	Free						
29	Kentucky River	Benson Creek Boat Ramp	US 127 in Frankfort (city limits) to Hwy 1211; turn right on Benson Valley Road	●	●	A	P	S	P	26-50	Free						
30	Kentucky River	Frankfort Boat Dock Ramp	Wapping St. in Frankfort behind Paul Sawyer Library. Note: parking fee during weekday business hrs.	●	●	B	P	M	P	< 25	Free						◇
31	KYDFW Game Farm Lake	Game Farm Lakes	US 60 W of Frankfort (2 miles); right at KY Dept. of Fish & Wildlife sign	○					P	< 25	Free		○	○	○	○	○
32	Kentucky River	Lee's Dock Ramp	US 127 S of Frankfort; left on Hwy 676; left on Hwy 420 (old Lawrenceburg Road)	○	○	B	P	S	U	< 25	\$						◇
33	Elkhorn Creek	Great Crossings Ramp	US 460 W of Georgetown; right on KY 227; right at park	●	●	B	P	S	P	< 25	Free						
34	Elkhorn Creek	Cardome Ramp	US 25 N of Georgetown (1/4 mile)	●	●	B	P	S	P	< 25	Free						
35	Elkhorn Creek	Oser Landing	US 460 E of Georgetown (1/2 mile)	●	●	B	P	S	P	< 25	Free						
36	Kentucky River	Clifton	Hwy 1964 W of Versailles to Clifton; left onto Buck Run Road (boat ramp before marina)	●	●	B	P	S	U	< 25	\$						○
37	Kentucky River	Fint's Ramp	US 62 E of Lawrenceburg; right on Hwy 1510 to ramp	●	●	B	P	S	U	< 25	\$						
38	Kentucky River	Onan's Ramp	US 62 E of Lawrenceburg; right on 1510 to ramp	●	●	B	U	S	U	< 25	\$						
39	Kentucky River	Oregon Road Ramp	US 127 N of Harrodsburg to Salvisa; right on Oregon Road	●	●	B	P	S	U	< 25	Free						
40	Kentucky River	Nonesuch	KY 33 S of Versailles; right on Cummings Ferry Road	●	●	B	P	S	U	< 25	Free	Yes					
41	Kentucky River	Palisade's Adventures	US 68 E of Harrodsburg to Kentucky River; on right before crossing river	●	●	B	P	S	U	< 25	\$		●		○		
42	Kentucky River	High Bridge	KY 29 S of Nicholasville through Wilmore to High Bridge	●	●	B	P	S	U	< 25	\$						
43	Kentucky River	Camp Nelson	US 27 N of Lancaster (13.2 miles); at bridge over Kentucky River	●	●	B	P	S	U	< 25	Free		○	●			
44	Kentucky River		KY 39 N of Lancaster (13.6 miles) to Giles near mouth of Paint Lick Creek	●	●	B	P	S	U	< 25	Free						
45	Kentucky River		KY 39 S of Nicholasville; left on Hwy 1541 for 300 yards	●	●	B	U	S	U	< 25	\$						
46	Kentucky River	KY 39 Ramp	KY 39 S of Nicholasville to Kentucky River	●	●	A	P	S	U	< 25	Free						
47	Kentucky River	Hunter's Ferry	KY 39 S of Nicholasville (1 mile); left on Hwy 1541; left on Hunter's Ferry Road	●	●	B	P	S	U	< 25	Free						
48	Kentucky River		KY 52 SW of Richmond; right on Hwy 1295 to Kirksville; right on KY 595 to river	○	○	B	P	S	U	< 25	\$						
49	Lake Mingo		US 27 to Lake Street in Nicholasville. Note: 1-acre lake	●					P	26-50	Free		●				
50	Kentucky River	Valley View Ramp (Jessamine Co.)	KY 169 SE of Nicholasville to Valley View Ferry (Jessamine-Fayette County line)	●	●	B	U	S	U	< 25	\$						
51	Kentucky River	Valley View Ramp (Madison Co.)	KY 169 N of Richmond to Valley View Ferry on KY River	●	●	B	P	S	P	< 25	\$						
52	Jacobson Pk. Lake		US 25 S of Lexington (4 miles) to park entrance. Note: 45-acre lake; no motors allowed	○	○	B	P	S	P	< 25	\$	Yes	○		◆	○	
53	Kentucky River	Clays Ferry Boat Dock	US 25 S of Lexington to Clays Ferry; right on Hwy 2328 to Clays Ferry boat ramp	●	●	A	P	S	U	< 25	\$						
54	Kentucky River	Boonesborough SP	I-75 N of Richmond to KY 627 exit; N to state park	●	●	B	P	M	P	< 25	Free		●	●	○		
55	Kentucky River	Ford Ramp	KY 627 S of Winchester; left on Old KY 627; left on Ford-Hampton Road. Note: public access only where road right-of-way connects river	●	○	B	P	S	U	< 25	Free					●	◇
56	Kentucky River	Jackson Ferry	KY 974 SE of Winchester (6 miles); right on Muddy Creek Road to river. Note: limited parking (2-4 vehicles); will accommodate only small boats; short turn around	●	●	B	P	S	U	< 25	Free						
57	Lake Reba	Lake Reba Sports Complex	US 25 S of Richmond; right on Lake Reba Road. Note: 76-acre lake; electric motors only	○	○	B	P	S	P	< 25	Free	Yes	○	○	○	○	○
58	Wilgreen Lake (Taylor Fk.)		KY 876 E of Richmond; left on Curtis Road; left on gravel road at bottom of hill. Note: 169-acre lake; idle speed only	●	●	B	P	S	U	26-50	\$						○
59	Central KY WMA		US 421 S of Richmond; left on Dreyfus Road to Management Area. Note: 1.0- and 4.5-acre ponds	○					U	< 25	Free						
60	Stanford City Res.		US 27 S of Stanford; right on KY 698; right on Water Works Road. Note: 43-acre lake	●	●	B	P	S	U	< 25	Free						
61	Hubble-Logan Pk. Lake		US 27 N of Stanford; left on Logan-Hubble Road. Note: 15-acre lake	●	●	B	P	S	U	< 25	Free		●		●		



Boating Operation Checklist

Safe operation of a boat depends greatly on proper maintenance and preparation. The actions of the operator and passengers are also important in ensuring a safe and enjoyable outing. The checklist below includes items, which can determine the safe outcome of your trip. Some of these items will be the same, no matter what kind of boating you do. However, to make sure all points are covered, create your own checklist and add to it as experience indicates.

- ✓ Full fuel tanks.
- ✓ Lights and horn working.
- ✓ Boat checked for leaks, bailed out, boat plug in.
- ✓ Fuel lines and tank checked for leaks.
- ✓ Weather and water conditions suitable.
- ✓ All gear and supplies properly stowed and secure.
- ✓ Motor in good operating condition.
- ✓ Propeller in good condition, lower unit free of weeds and debris.
- ✓ Passengers seated and briefed on emergency procedures. Their PFDs should be checked for fit.
- ✓ Operator alert, sober, and ready.
- ✓ File a float plan with a responsible person ashore.

Index Legend

A	"A" Ramp - any trailerable recreational boat		
B	"B" Ramp - any LIGHT trailerable recreational boat		
C	"C" Ramp - carry-down only		
S	Single launch lane	♿	Handicap Accessible
M	Multiple launch lanes	●	Year-round 24 hours
P	Paved ramp/parking lot	○	Year-round limited hours
U	Unpaved ramp/parking lot	◆	Seasonal 24 hours
<25	Number of vehicles	◇	Seasonal limited hours

Herrington Lake Index

Site	Water Body	Ramp Name	Directions	Shoreline	Boat Ramp	Ramp Type	Ramp Surface	Launch Lanes	Parking	Capacity	Ramp Fee	Courtesy Dock	Handicap Pier	Picnic	Camp	Restrooms	Marina
1	Herrington Lake	Dix Dam Boat Ramp	KY 152 E of Harrodsburg; left on KY 33; right on KY 342; right on Hardin Hts Road	●	B	P	S	U		< 25	\$						
2	Herrington Lake	Royalty's Camp Ramp	KY 152 E of Harrodsburg to Burgin; left on KY 33; right on Curdsville Road (KY 342); right on Normans Camp Road	●	B	P	S	P		< 25	\$						○
3	Herrington Lake	Cane Run Ramp	KY 152 E of Harrodsburg; left on Cane Run Camp Road	●	A	P	S	U		< 25	\$						○
4	Herrington Lake	Chimney Rock Ramp	KY 152 E of Harrodsburg to Chimney Rock Road	●	A	P	S	P		26-50	\$					●	○
5	Herrington Lake	Sunset Marina	US 27 N of Lancaster (10.3 miles); L. on KY 152 (4.2 miles); on right before crossing Kennedy's Bridge	●	A	P	S	U		< 25	\$	Yes				●	○
6	Herrington Lake	Camp Kennedy	US 27 N of Lancaster (10.3 miles); left on KY 152 (4.1 miles)	●	A	P	M	U		26-50	\$	Yes			●	●	○
7	Herrington Lake	Pandora Ramp	KY 152 E of Harrodsburg; right on Ashley's Camp Road (ramp is next to Kennedy Bridge)	●	B	P	S	P		< 25	\$						○
8	Herrington Lake	Tanyard Branch-Red Gate Fishing Camp	US 27 N of Lancaster (8.9 miles); left on KY 753; left on Tanyard Road	●	A	P	M	U		< 25	\$				●	●	○
9	Herrington Lake	Herrington Marina	US 27 N of Lancaster (8.3 miles); left on KY 1355; right on Fisher Ford Rd; right on Sharp Rd; located by mouth of McKecknie Creek	●	A	P	S	P		26-50	\$	Yes				●	○
10	Herrington Lake	Sims mid-lake ramp	KY 152 E of Harrodsburg; right on Hwy 33 S; left on Hughley Lane	●	A	P	M	P		26-50	\$					●	○
11	Herrington Lake	Gwinn Island	KY 33 N of Danville; right on Gwinn Island Road	●	A	P	M	P		26-50	\$					●	○
12	Herrington Lake	Keys Landing Boat Ramp	US 150 E of Danville; left on KY 34 E; left on Taylor Creek Road	●	A	P	S	U		< 25	\$						
13	Herrington Lake	Kings Mill Ramp	US 27 N of Lancaster (7.2 miles); left on KY 34 (1.6 miles)	●	A	P	S	U		< 25	\$					●	○
14	Herrington Lake	Bryants Camp	US 27 N of Lancaster (5.7 miles); left on Paper Mill Road; right on Fork Church Road (KY 3373)	●	A	P	M	P		26-50	\$	Yes			●	●	
15	Herrington Lake	Millers Landing	US 150 E of Danville; left on US 52; left on Clifton Road	●	A	P	S	U		< 25	\$	Yes					
16	Herrington Lake	Cliftons Dock	US 150 E of Danville; left on US 52; left on Clifton Road	●	A	P	S	U		< 25	\$						

