

The



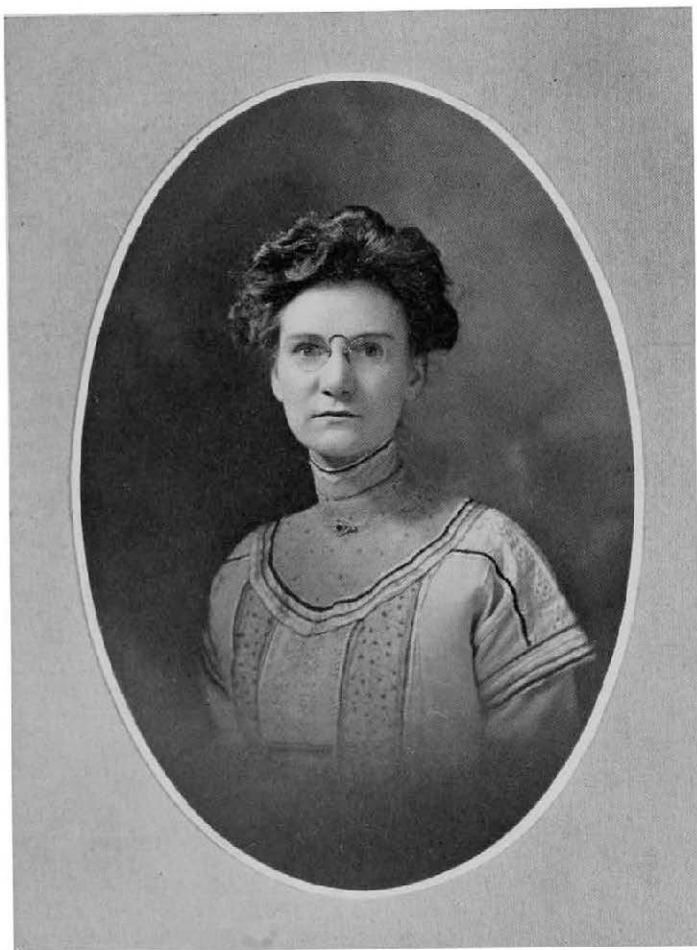
Owl

1913

MINERVA HIGH SCHOOL

Minerva

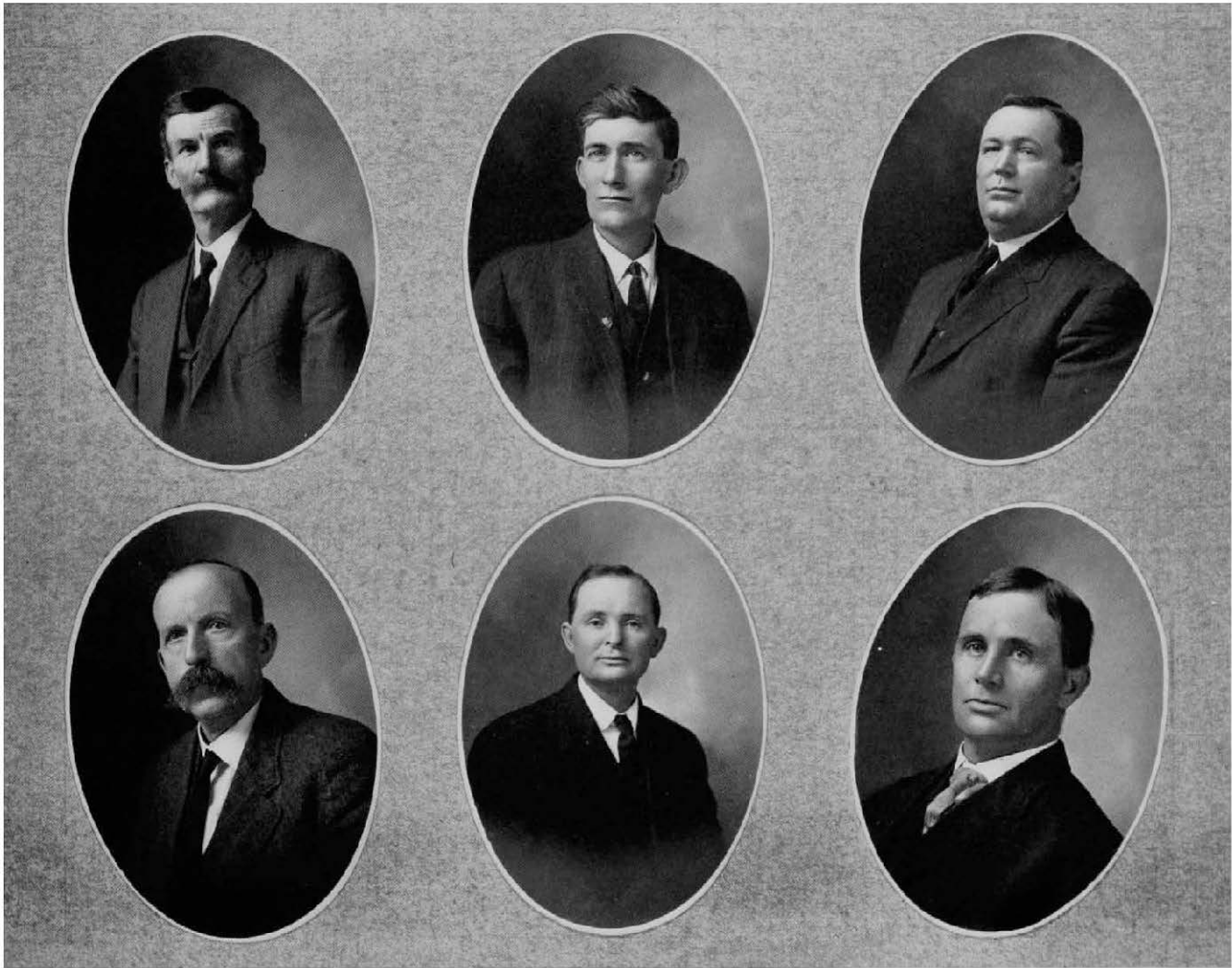
Mason County, Kentucky



MISS JESSIE O. YANCEY,  
*Superintendent of Mason County Schools.*

MASON COUNTY HIGH SCHOOLS

Minerva    Orangeburg    Mayslick    Maysville    Sardis



COUNTY BOARD OF EDUCATION, MISS JESSIE O. YANCEY, *Chairman*

E. FRANK BOYD, JR.  
CHARLES F. OWENS

EDWARD B. KENNARD  
A. SCOTT YOUNG

EDWARD RUBENACKER  
WILLIAM E. PYLES, *Secretary*



**W**E DEDICATE this publication to County Superintendent of Schools, Miss Jessie O. Yancey, whose administration of the county schools has been successful beyond all expectations, and to the County Board of Education, whose progressive policies have put Mason in the front rank of our Kentucky counties.





### The Owl Staff

THOMAS E. FOLEY, *Editor-in-Chief*  
MAE ROBERTSON, *Associate Editor*  
NELLIE WORTHINGTON, *Associate Editor*  
MAE WALLINGFORD, *Associate Editor*  
O. N. WEAVER, *Business Manager*



## An Old Educational Center



IN the ante-bellum days, Minerva Seminary flourished as one of the first and most prominent institutions in the West. It was chartered in 1854 with five trustees, Samuel Frazee, Dr. W. H. Robertson, Samuel Forman, T. C. Newcomb and A. A. Winter. In 1856 important changes were made to meet its growing needs and the name was changed to Minerva College. It was organized as a stock company. Fifty-two men subscribed stock from one to fifteen shares of ten dollars each.

Educators of prominence graced the halls of the old institution, and among them may be mentioned such men as Westfall, Blair, May, Sherman, Durant, Thomas and Weaver.

In these days the public schools were in their infancy and the colleges were few. It was only by means of such patriotic efforts as this that education was placed within the reach of the masses.

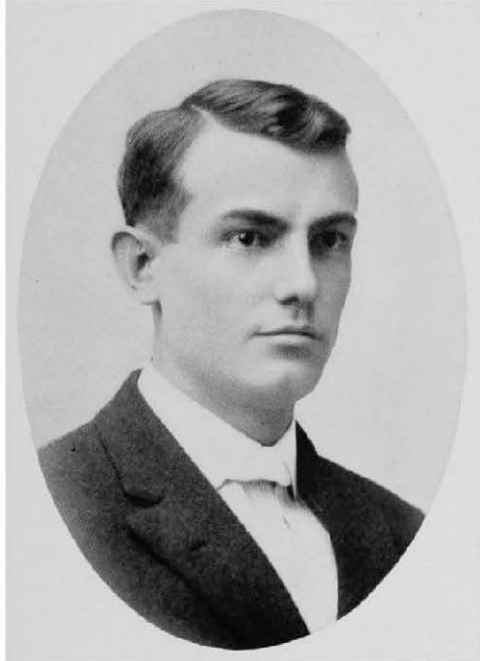
Among the alumni will be found some of the most successful business and professional men of our country. The Minerva community today has a high class of people and a long-standing culture due to early educational advantages.

In 1909, the Board of Trustees, composed of Walter Worthington, Thomas R. Robertson, W. T. King, Robert N. Brooks and E. F. Boyd, Jr., surrendered their charter and turned over all property to the Mason County Board of Education to maintain a first-class County High School. For additional building the County Board appropriated \$1,100, and a large fund was raised locally to supplement it.

Under the new management Minerva High School has had a marvelous growth and has made a statewide reputation for a high class of work.

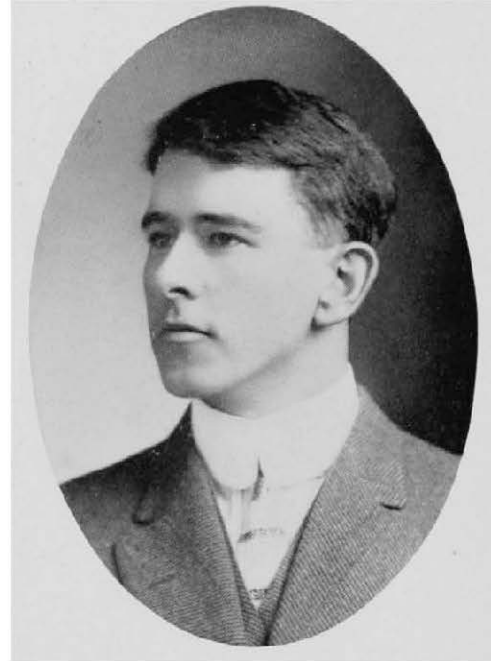
February 13, 1913, the Committee on Accredited Standing for the Association of Colleges placed this High School on the accredited list with one more unit of work than is necessary to get freshman rank in the best Colleges and Universities. This committee is composed of Prof. C. J. Cook, Central University; Prof. R. G. Foust, Principal Owensboro High School, and Prof. McHenry Rhoads, State Supervisor of High Schools.

Minerva High School graduates are now admitted to the best institutions without examination and are making good records.



WILLIAM C. CORYELL,  
*Principal.*

Ohio Wesleyan University, A. B. 1906.  
Teachers' College, University of Cincinnati, 1909.



FRANK H. TOMKIES,  
*Assistant Principal.*

Vanderbilt University, 1909-11.  
Kentucky State University, B. S. 1912.  
Post-Graduate work in the Department of Education,  
Summer School, 1912.



MRS. MINNIE BOYD DOBYNS,  
*Intermediate.*

State Certificate.  
Life Diploma, Department of Education, Kentucky  
State University.



MISS EDITH BROWNING WOOD,  
*Primary.*

Millersburg Female College, A. B. 1909.  
Special Training, Eastern Kentucky Normal School.





MISS LOUISE SMALL,  
*Vocal Music.*

Diploma, Public School Music, Ohio College of Music,  
Cincinnati.



MISS ANNA T. COOKE,  
*Piano.*

Conservatory of Music, Cincinnati.  
Harmony, College of Music, Cincinnati.



MRS. LUCIEN NORRIS,

*Drawing.*

Pupil of Miss Eleanor Martin, Columbia College, Mo.  
Pupil of Miss Stubbs, Cincinnati, pupil of Bischoff.

## Class Officers, 1913



THOMAS E. FOLEY.....*President*  
LILLIE WORTHINGTON.....*Vice-President*  
RUTH SLACK.....*Secretary*  
KATIE DWYER.....*Treasurer*

Colors — Orange and Black

Flower — Sun Burst Rose

Motto — "In ourselves our future lies"

### CLASS ROLL

Ruth Slack  
Lillie Worthington  
Augusta Kelsch  
Mae Warder Wallingford  
Nellie Worthington  
Katie Dwyer  
Mary Thornton King  
Edna Mac Robertson  
Thomas E. Foley  
O. N. Weaver  
Eugene Boyd



"Wise Old Owls"



RUTH SLACK.

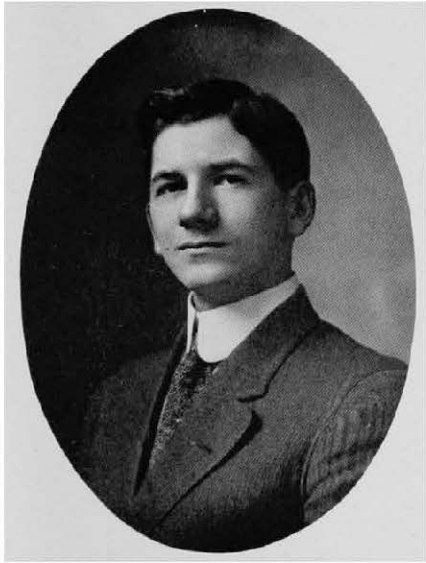
*"Still she retains her maiden gentleness."*

This sweet girl graduate is a veritable prodigy in matters relating to Mathematics, Chemistry and other intricate subjects which the writer refrains from discussing in detail lest perchance he should disclose his lamentable lack of knowledge. Endowed as well with great personal attractiveness, she is a young lady of whom we may be proud.

KATIE DWYER.

This young lady can not endure anything which savors of depression. When she enters an indigo atmosphere it immediately undergoes a remarkable metamorphosis and it becomes contagiously bright, reflecting in the faces and manners of all coming in contact with it, the optimistic spirit infused by this pleasure-loving, earnest-working girl.





O. N. WEAVER.

This promising young man, whom we delight to honor as an unusually gifted and appreciative member of the Class of '13, seems to be fully cognizant of his privilege in being one of our group and apparently has a firm determination to prove himself worthy of the distinction.

One of his marked characteristics lies in a remarkable predilection for the fair sex; but he very wisely does not permit their charms to interfere with his more serious duties, and we are thus led to predict that his career will be uniformly successful and that he will reap success wherever he goes.

AUGUSTA KELSCH.

*"A school of goodness in which chaste maids may learn  
To be as she is, excellent."*

Obstacles in the path of her scholastic advancement but serve to intensify her desire to triumph and in this she usually succeeds as her record will signally attest. She has given us reasons to expect great things of her, and we entertain not the slightest fear of being disappointed.





MARY THORNTON KING.

*"A countenance in which did meet  
Sweet records promises as sweet."*

A most winning girl whose scintillating wit and gentle good humor has contributed much luster to the brightness of our school life. It is with sincere regret that we relinquish the pleasure of having for a schoolmate such a genuinely true and unaffected American girl as Mary Thornton.

EDNA MAE ROBERTSON.

*"Musical as Appollo's Lute."*

This charming little wild flower hails from the picturesque hills of Bracken. Gentle, vivacious and brilliant, she is the very incarnation of the spirit of that sylvan region. She loves her birthplace and her Alma Mater with an affection deep and abiding. Her presence has been a source of supreme delight these many years, and now we joyfully acclaim her as a rose among the roses and the fairest of the fair.





**THOMAS E. FOLEY.**

His intellect sparkles with the native brilliancy of the diamond. Among other conspicuous features are his indomitable energy, philosophical turn of mind, and a unique personality.

Quick witted and gifted by nature for leadership, he goes forth full of promise for a useful and successful career.

In spite of the "numerous peculiarities" of his nature, this precocious youngster has a laudable ambition and a just claim to achieve distinction.

In the years to follow, the members of his class will point to him with pride and exclaim, "Oh, yes, I know Judge Foley. He was a classmate of mine."

**LILLIE WORTHINGTON.**

*"Sober, steadfast and demure."*

The youngest member of the class, and if scholastic records are accurate indications of abilities, the brightest as well. Possessing, in addition to a brilliant mind, a peculiar grace of manner, she has made all her acquaintances her firm friends.





MAE WARDER WALLINGFORD.

*"A perfect woman, nobly planned  
To warn, to comfort and command."*

Nothing less than Wordsworth's matchless couplet can depict the virtues of "our Mae," whose brilliancy of intellect and genial spirit has gone far toward making our school days the happy never-to-be-forgotten ones they were.

NELLIE WORTHINGTON.

*"So buxom, blithe and debonair."*

One of the brightest, most attractive, and interesting members of the class. She is gifted with intelligence, blessed with wide human sympathies and graced with a gentle engaging manner. We prophesy with the utmost confidence that in days to come, whenever a list of the alumni of the grand old school is compiled, Nellie's shall stand second to none.







## Class History, 1913



WITH seemingly flying footsteps the end of the present school year approaches us. Then will the "Class of 1913" be disbanded, there will its aspirations, achievements, desires and realizations as well as its reverses as recorded in the history of the school and chronicled and cherished in the hearts of its members, be only a memory. It is the thought then that we must hie away, "Tomorrow to fresh fields and pastures new," recurring daily with additional stress that stimulates us instinctively to indulge in retrospection and encourages us to ponder a while over the tablets of memory whereon our history is inscribed. Scanning these reminiscences somewhat wistfully it seems we find that the oldest of us in point of attendance entered Minerva College, as it was then designated, in 1902.

This was before the era of musical and drawing instructions, and prior to the introduction of many of the improvements with which we are now blessed. The entire building at that time consisted of merely the old brick structure, containing three rooms, which was erected some fifty years before. We spent our allotted time in each of the departments of the old school, gaining in proportion as we applied ourselves. When in 1910, after the old building had proven en-

tirely inadequate to the needs of an ever-increasing student body, the commodious new wing was added, we were in the group assigned to occupy it.

In 1904, the introduction of the Musical Department gave to those of the class possessing musical talent an exceptional opportunity to develop and enhance their natural abilities. In 1911, the singing and Art Departments were instituted, the former under the efficient supervision of Miss Small, the latter ably directed by Mrs. Norris.

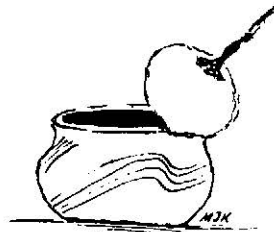
The heads of each of these divisions have, according to their own statements, discovered in the school and especially in the Senior Class talents of great promise.

From its inception, in 1910, the Athletic Association has always found in the Seniors firm supporters. Many of its star players have been recruited from it. Likewise has this class been the moving spirit in the literary organizations, and assumed as well the prominent part in the school entertainments.

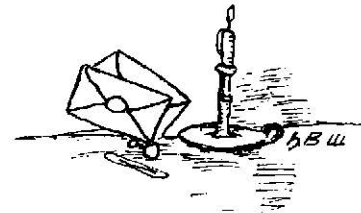
The personnel of the class has, owing to many additions to and depletions from it, varied widely during its history. We now number ten happy enthusiastic students. We are prepared to receive the formal acknowledgements of our completion of the curriculum of Minerva and are anxious to widen our scope of learn-

ing either in college halls or commercial pursuits. We have gained that knowledge which will tend to make us more desirable companions, more intelligent citizens and far more faithful alumni of the old school, trusting all the while that a strict observance of the principle infused into us may influence a kindly providence to mete out to us, in after life, the same generous measure of happiness with which she has so lavishly blessed us in our school days at Minerva. For our school life has certainly been memorably pleasant in every way, and I am sure that if any of us were

asked to epitomize in a word his collegiate experiences, they would unhesitatingly answer pleasurable. And so I doubt not but that in after years, when in retrospective moments we gently touch with the fingers of recollection the keys of that great instrument, the Past, the notes whose harmonies shall sweeter sound and longer to cheer us as to the days gone by and inspire us as to those to come, shall be the ones which correspond to the days we spent in the springtime of our lives as members of the Class of '13 down at old Minerva High School.



"All Is Vanity"



"Burning Midnight Oil (?)"

## Class Poem

How dear to my heart are the joys of my school days,  
When memory's pages invite me to look.  
It is there I recall the pleasure and by-plays  
Of frolic and fun when through with our books.  
There were Mary, Mae, Katie, Nellie and Ruth,  
Augusta and Lillie in full bloom of youth;  
Then O. N. and Tom thrown in for good measure,  
While the speaker, herself, humbly joined in the pleasure.  
Those dear honest faces, those bright happy faces,  
Those joyful young faces we all loved so well.

Our beautiful campus was always a pleasure,  
And many a game we've enjoyed to the full,  
When our boys were victorious in right goodly measure  
And won all their laurels with never a pull.  
The wide-spreading campus, the schoolhouse, the falls,  
Are pictures that hang in memory's hall,  
And e'en shall stay hung there in time-honored places  
Where the heart can turn backward and always recall.  
But oh! those wise teachers, those grim sturdy teachers,  
Those firm and kind teachers the class knew so well.

How sweet to look backward, remember the classes —  
The teachers' wise faces, "exams" and the "passes;"  
The failures and victories too many to tell.  
How bravely we struggled to climb hills of learning.  
With feet that oft wearied and struggled — and fell.  
A feeling of sadness comes stealing o'er me  
When I think of the bright happy days that have gone,  
And the dear girlish faces no more to assemble  
Before the old school door each bright sunny morn.  
And now let me say on this eve, ere we part,  
I wish you great happiness from the depths of my heart.

MAE WALLINGFORD.

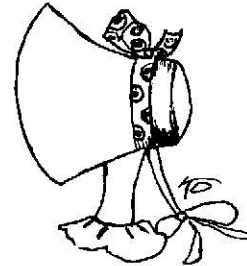
## Junior Class



ALICE ROBERTSON.....*President*  
B. REED LUNSFORD.....*Vice-President*  
LILLIAN WALLINGFORD.....*Secretary*  
PRUDYE LEE HAUGHEY.....*Treasurer*

### CLASS ROLL

Ida Mae Donovan  
Prudye Lee Haughey  
Alice Leroy Robertson  
Lillian Morrison Wallingford  
Alma Richards Colvin  
Emma Barrett  
B. Reed Lunsford  
Thomas C. Moore

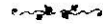


"Maids Wise or Otherwise"



Junior Class

## Sophomore Class



FRANK FOLEY.....*President*  
EDNA SCOTT.....*Vice-President*  
WANDA McCLANAHAN.....*Secretary*  
STANLEY GIBBONS.....*Treasurer*

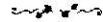
### CLASS ROLL

Susie Haughaboo  
Wanda McClanahan  
Matilda Spiller  
Edna Scott  
Frank Foley  
Stanley Gibbons  
Eugene Slack



Sophomore Class

## Freshman Class



IDELLA CLEVELAND.....*President*

PAULINE BYAR.....*Secretary*

### CLASS ROLL

Pauline Byar

Mary Slack

Idella Cleveland

Charles Coryell

Glenn Wallingford

Ward W. Wallingford

William Habermehl

James Weaver

Bryan O'Neil

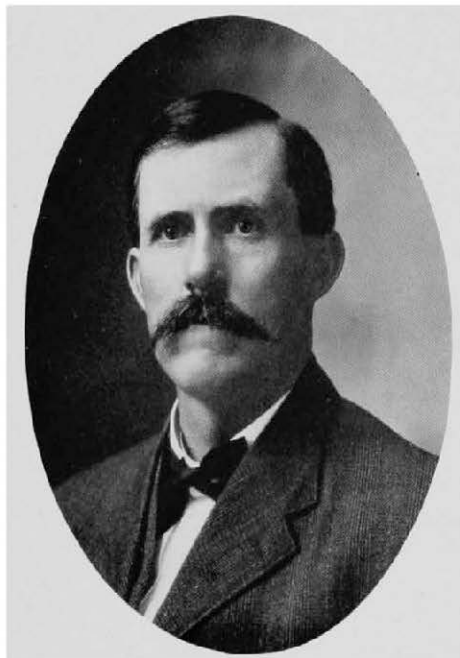
Lillian O'Neil

Rebecca Winter





Freshman Class



DR. S. E. POLLITT,  
*Trustee Healt Endowment Fund.*

James M. Fleatt

---

Born May 23, 1813

Died June 20, 1889

---

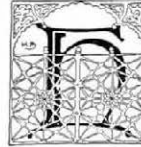
The Friend of Poor Children

The above suggestive inscription may be read in a graveyard near Minerva.

To this place the school children make annual visits to lay flowers on the grave of one who has done so much for them. Exercises are held to perpetuate his memory. His last will and testament left \$12,000 in an endowment fund for Minerva School.

Dr. S. E. Pollitt, trustee of this fund, has wisely managed it so that it supports a teacher of drawing and a teacher of vocal music and extends the school term to nine months.

## JAMES F. BLESS



E is seventy-six years of age, but still has the appearance of mature manhood, and strong mental attainments.

Born in Minerva, Kentucky, in the year 1837, he spent his boyhood days in this vicinity and early manhood until 1860, when he removed to Newark, State of New Jersey, where he engaged in the manufacturing business. He attended school at Minerva, and in fact received his education in this institution of learning, never having taken a course of training in any other school, except the great college of experience.

He has never, so to speak, separated himself from Minerva and its people. Always in conversation he referred to it as one of the dearest spots on earth to him. This doubtless is true of the majority of mankind. The places and people associated with our years of tenderness and first impressions make of the people celestial, and the place holy ground.

The school of Minerva had a period of depression and adversity, in which it was little better, if any, than the most ordinary of common schools.

At about this time, Mr. James M. Hieatt died and willed his modest fortune to the institution. The school then began to breathe again, to take on new life, to lift its head and come to the front.

Mr. Bless, it seems, all the time was keeping up with his old Alma Mater, and when told that our musical apparatus was below par, offered to furnish us with the needed instruments, provided we would build the room.

So, in contracting for the new High School, the James F. Bless Studio was added.

In order to get an idea of what he has done, it becomes necessary for you to visit the school and note the splendid piano, furniture, Persian rugs, pictures, portiers, and in fact everything needed for an up-to-the-hour music room.

Our prayer is, "Long may he live, his last days his best days."



James F. Bless Music Studio



# The Minerva School of Music

MISS ANNA T. COOKE.....*Piano*  
MISS LOUISE SMALL.....*Vocal*



THE musical spirit at Minerva is essentially progressive. The methods that are used not only insist upon the practical work of execution, but awaken the attention and the reflective power of the pupil as well.

They learn to appreciate the aesthetic value of music, its influence for mental exaltation and refinement and the irresistible appeal to all that is highest and best.

The general plan of the studies follows the lines of the best American conservatories, with such modifications as are necessary for general education.

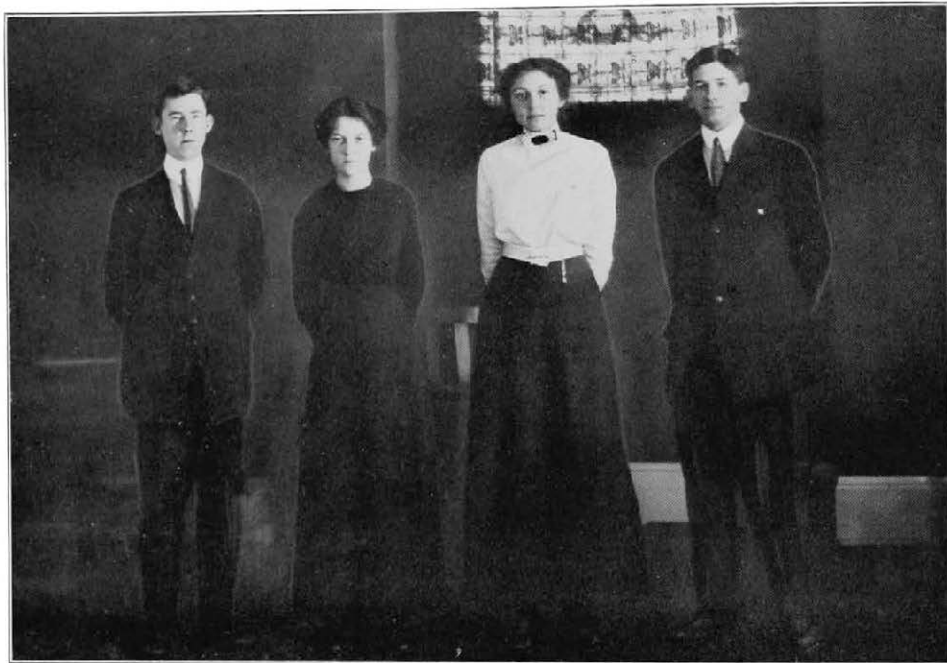
It forms a complete and harmonious system, comprising lessons in piano playing, courses in violin and other stringed instruments, voice culture, and classes in theory and harmony.

The accomplished Director of Vocal Music has been marvelously successful. The pupils sing with ease and feeling, with a just perceptive sense of tone value and shading, and with simplicity and spontaneity in part songs, choruses and other pieces of ensemble.





Music Class



High School Quartette

MAE ROBERTSON.....*Soprano*  
MAE WALLINGFORD.....*Alto*  
B. REED LUNSFORD.....*Tenor*  
O. N. WEAVER.....*Bass*





# Hieatt Literary Society



## Officers

MAE ROBERTSON.....*President* O. N. WEAVER.....*Secretary*  
 MAE WALLINGFORD.....*Vice-President* THOMAS E. FOLEY.....*Treasurer*  
 B. REED LUNSFORD.....*Sergeant-at-Arms*

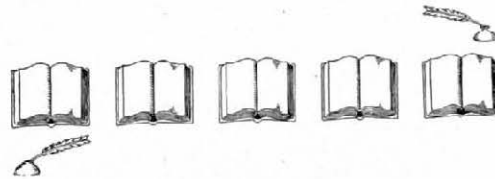


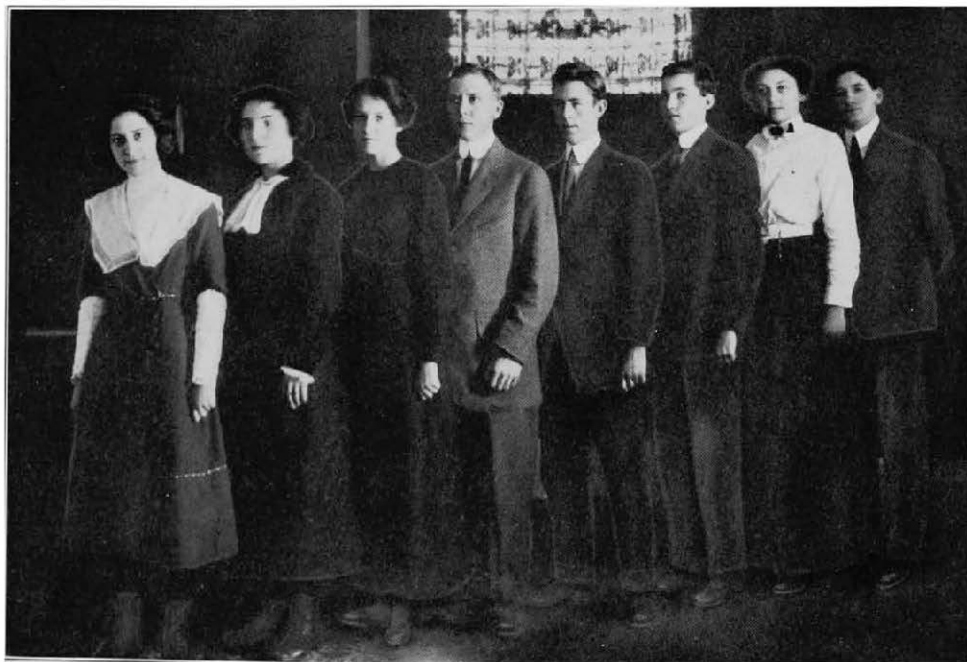
It has long been established that in order to meet fully the needs of students and to develop the highest degree of efficiency, a school must make one of the strong factors, in the student life, an active and progressive literary society.

Minerva, recognizing this fact and keeping with her custom of fostering every movement which will make for the better culture of those who seek its halls, years ago organized the Hieatt Literary Society, which is now so flourishing.

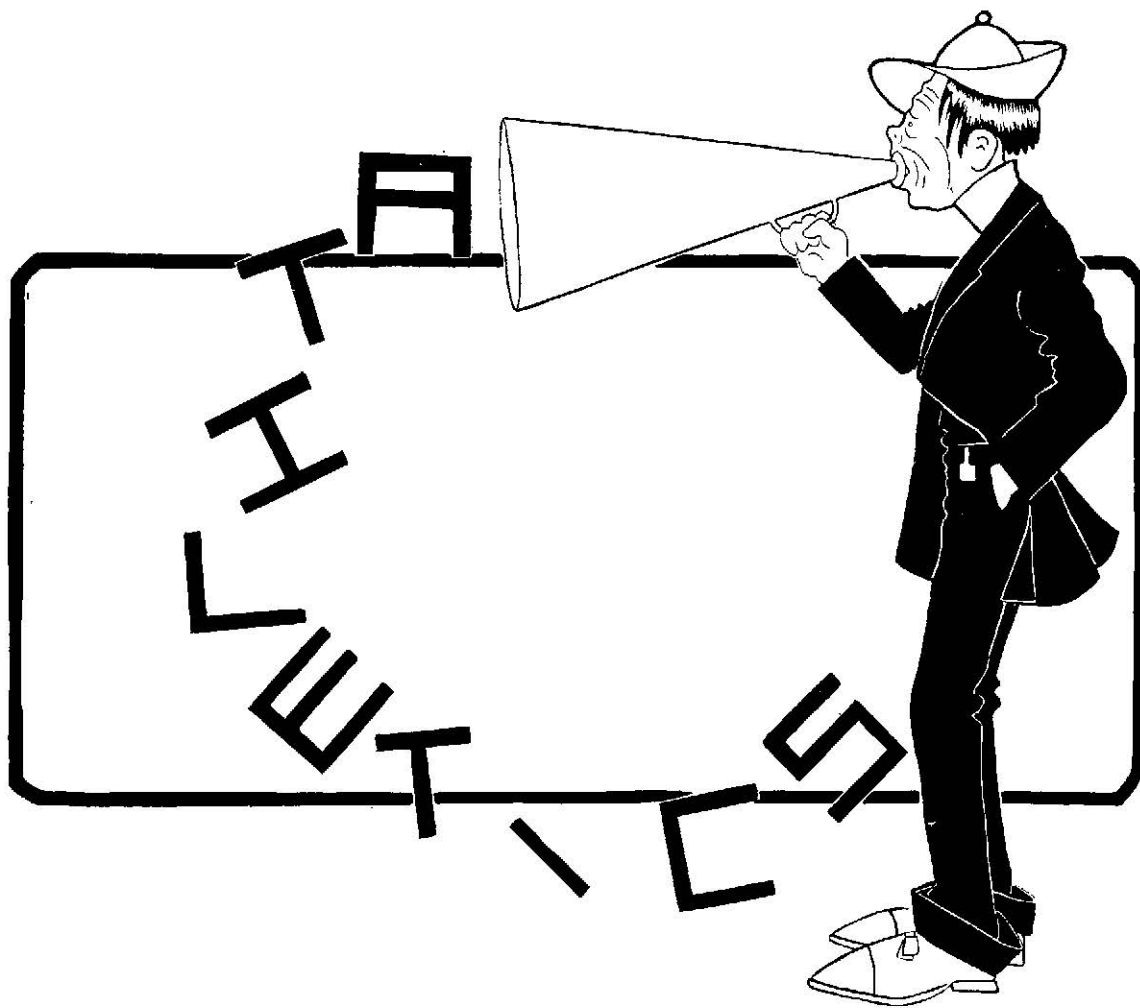
The outlook for the future is indeed bright. Increased interest is being manifested in its proper development, and every member is steadily becoming more enthusiastic over it. This fact, coupled with unexcelled natural talent and good instructors, give ample basis for the assertion that success will ever attend the activities of the Society.

In our tomorrows, when we meditate over the "Golden glory of the days gone by," not the least prominent feature of our reverie will be the thought of the pleasure and profit gained in our association as members of the Hieatt Literary Society.





Debating Club



# Athletic Association

B. REED LUNSFORD..... *President*  
 CHARLES CORYELL..... *Vice-President*

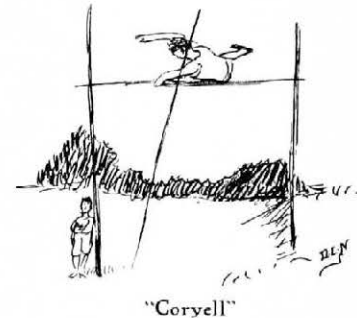
O. N. WEAVER..... *Secretary*  
 STANLEY GIBBONS..... *Treasurer*

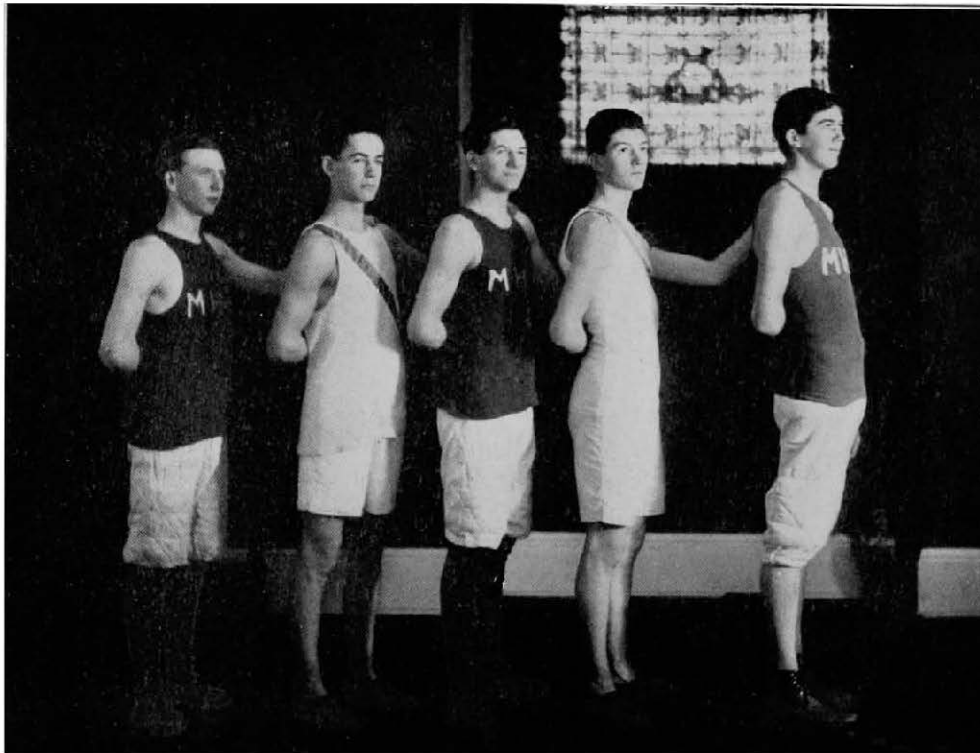


THE chief object of interest outside the routine of our regular school work is athletics. We realize the body must be developed as well as the mind. It would be a sad day when the institutions of learning ceased to hold the physical education of man as an important factor in its curriculum. In athletics we are merely obeying the laws of nature, the laws of God. To keep a pure, clean body, take plenty of exercise. To refrain from dissipation, eat proper food and stay in open air as much as possible. Some of the advantages derived are not only soundness of body and

good health, but it cultivates obedience, self-control, discipline, a determination to succeed regardless of opposing numbers, a jovial spirit when facing overwhelming odds, adversity, and defeat. The Duke of Wellington was once asked as to what did he attribute his success. He said: "It was on the football fields of Eton and Rugby where I received the training to which I owe my success in after life." A source of pride of this institution is in its clean players and the manly treatment showed by them to their opponents whether defeated or victorious.

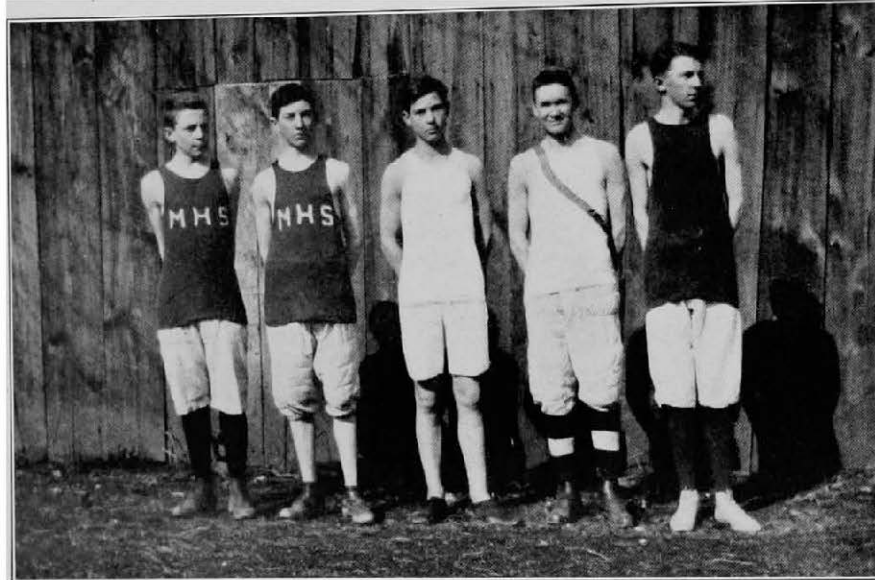
Our motto is taken from the Golden Rule.





**First Basket-ball Team, 1912-13**

Eugene Boyd.....	Captain and Right Forward
O. N. Weaver.....	Left Forward
Eugene Slack.....	Center
Charles Coryell.....	Right Guard
Stanley Gibbons.....	Left Guard
Harold Brooks.....	Left Guard



Second Basket-ball Team, 1912-13

Joe Coryell.....Captain and Right Guard  
James Weaver.....Left Guard  
Floyd Miller.....Center  
Glenn Wallingford.....Left Forward  
Frank Foley.....Right Forward

## Basket-Ball Team



ORGANIZED our first team in 1910, though played a light schedule. The team was very promising. Defeated in most of the games that season, however, they showed courage and perseverance.

In the following season of 1911-12 they met with utmost success, not only defeating those who proved superior the former season, but also the teams of many other neighboring high schools, suffering from only one defeat.

Season of 1912-13 opened with the usual interest displayed. Again having a limited schedule, the team was the victor in the majority of contests.

The games were hailed with keen interest and delight by the many and enthusiastic rooters who always encouraged the players and shared equally with them in the rejoicing of victory or the deep regret in defeat.

The skill of the players was displayed in the beautiful team work, together with their quick forethought and action.



"Dandy"



"Gene"

## Track Team



SEASON of 1912 opened finding the team training for the Kentucky high-school meet to be held at the State University. Though only short notice was given of the meet at Lexington, which was to be May 4th, found the M. H. S. boys on the field ready to bear their part in the contest. The meet was the first of its kind in the state and proved a success. The Minerva M. H. S. boys held third place. Their opponents were of the leading high schools of Kentucky. A dual meet with Flemingsburg H. S. on May 18th was the last of the season, Minerva winning forty points out of a total of sixty-two, besides the mile relay. A beautiful silver loving cup was awarded the winning team in the mile relay. This was carried home by the M. H. S. boys.

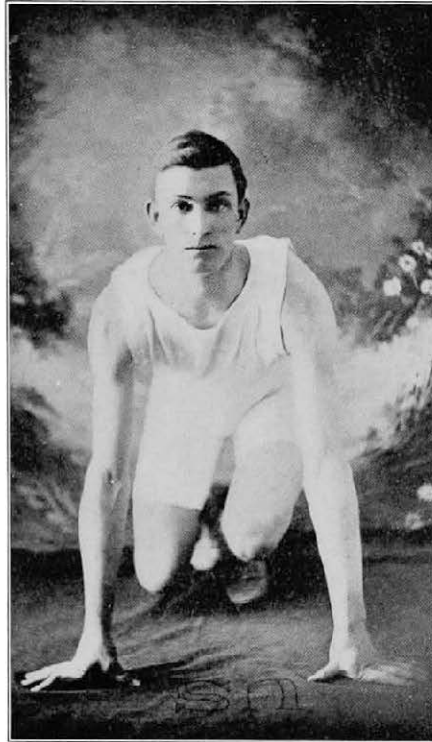
The coming season of 1913 is looked forward to with great interest. Extensive preparations are being made for a grand high-school track and field meet. The state is divided into four divisions, with centers at Maysville, Shelbyville, Richmond and Madisonville.

A meet is to be held in each of these centers on a certain date, and each high school decides to which of these centers it will send its team. The individuals making a good record in preliminary meets will be eligible to compete in the final meet held at Lexington.

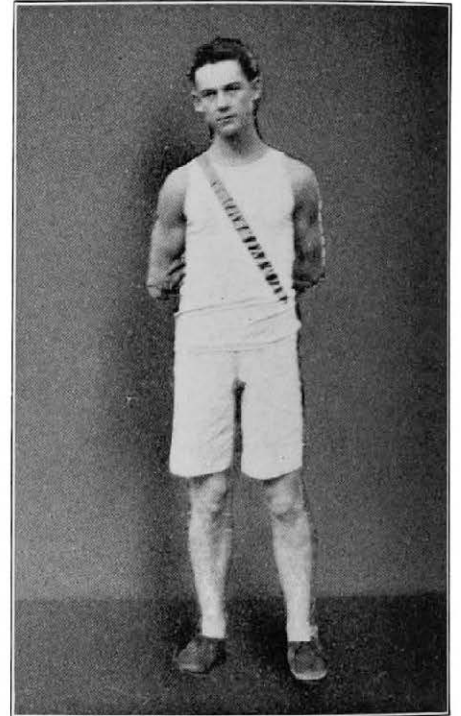
This will make the winners at Lexington state champions.



*"On Your Marks."*  
STANLEY GIBBONS.

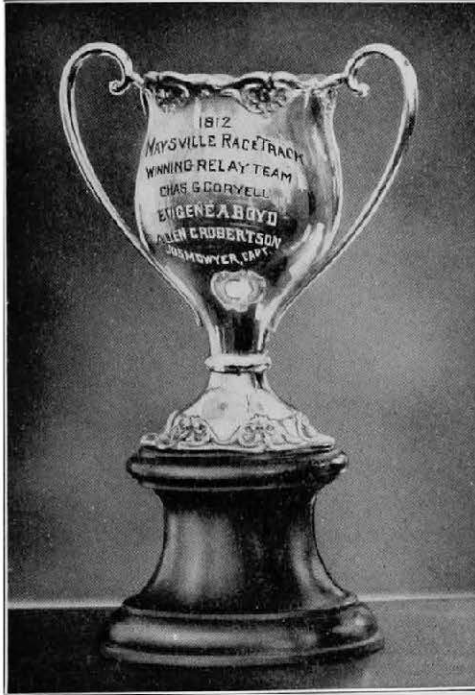


*"Get set."*  
CAPTAIN ALLEN ROBERTSON.



*Ready for a mile run.*  
CHARLIE CORYELL.

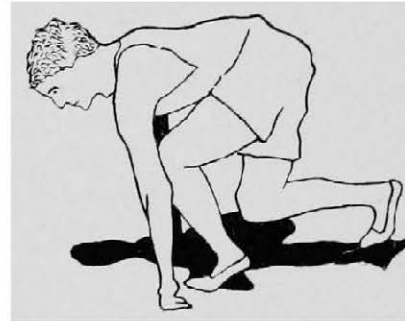




## Track Team, 1913

---

Allen Robertson, Captain . . . . . Dashes, Shot Put  
 Reed Lunsford . . . . . One-Mile Run  
 Charles Coryell . . . . . Quarter Mile, 220-Yard Run  
 Stanley Gibbons . . . . . Hurdler, Half Mile, Broad Jump  
 Floyd Miller . . . . . High Jump, Quarter Mile  
 Joe Coryell . . . . . Half Mile  
 Robert Haughaboo . . . . . Hammer, Shot Put  
 James Weaver . . . . . Pole Vault, Half Mile  
 Glenn Wallingford . . . . . Half Mile





School Wagon

## Transportation of Pupils

THE Minerva patrons use the stock-company plan to provide transportation of pupils. They bought an Olsen wagon for \$175, including \$25 freight, from Pittsboro, Ind., and sold 35 shares, \$5 each, as follows:

Charles Wallingford.....	5
William Colvin.....	5
John Wallingford.....	5
C. T. Moore.....	5
Arthur Donovan.....	5
Neal Dwyer.....	5
Casper Haughaboo .....	5

They elected Charles Wallingford President, and William Colvin Secretary, and employed Allen Slack as driver at \$45 per month. Each patron is assessed in proportion to the number of children riding, to pay cost of transportation. Fifteen pupils at 15 cents a day will pay expense. The plan works admirably.

There are twelve more school wagons in Mason County, and four consolidated schools.

Nine of these wagons are supported by local taxation and three by Fiscal Court levy.





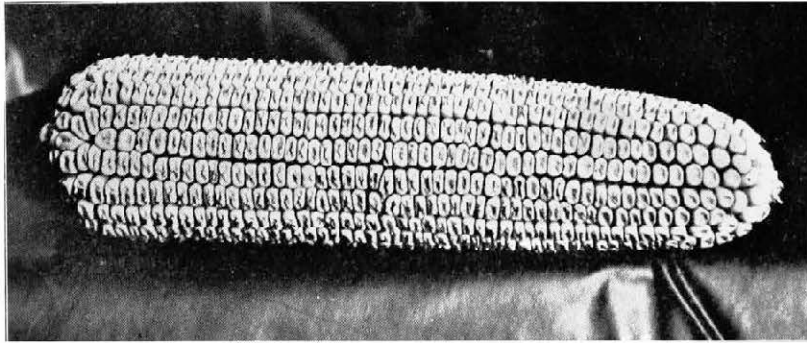
Some High-School Students

### YELLS

M—I—N—E—R—V—A  
Minerva, Minerva,  
Rah! Rah! Rah!

Wa-hoo, Wa-hoo,  
Rip, zip, ba, zool,  
I yell, I yell,  
Minerva High School.

Pike's Peak or bust,  
Pike's Peak or bust,  
Minerva, Minerva,  
Yell we must.



## Boys' Corn Club

ROBERT HAUGHABOO ..... *President*  
 FLOYD MILLER ..... *Vice-President*  
 GLENN WALLINGFORD ..... *Secretary*



WITH thirty active members, this Club has led all the clubs in Mason County and ranks among the first in the state. Mason County leads all of the counties in Kentucky in the amount of corn produced per acre. Minerva is located in one of its richest agricultural belts. Boys are taught to test corn, to cultivate scientifically and to judge corn. In the course of study, agriculture is emphasized both in the grades and in High School.

Mason County held the first School Fair in Kentucky, in 1912, and its success was most gratifying.

The School Fair and Corn Show, February 22, 1913, exceeded all expectations. Minerva Boys' Club won nearly one-half of the corn prizes, as follows:

Best ten ears of white dent corn —  
 Ralph Pickett, first.....\$6.00  
 Best bushel of white dent corn —  
 Robert Haughaboo, second..... 6.00

Best ten ears of yellow corn —  
 Eugene Boyd, first.....\$6.00  
 Willie Snyder, second..... 2.50  
 Best bushel of yellow corn —  
 Eugene Boyd, first.....10.00  
 Eugene Slack, second..... 6.00  
 Best piece of needlework —  
 Idella Cleveland, first..... 2.50  
 Best pencil drawing —  
 Emma Barrett ..... 2.50  
 Total .....\$41.50

### SUMMARY OF CORN PRIZES

Minerva, 6	Mayslick, 2
Washington, 3	Orangeburg, 1
Lewisburg, 2	Downing, 1

During the administration of County Superintendent Jessie O. Yancey, agriculture and matters pertaining to rural life have been emphasized more than ever before.

## Girls' Tomato Club



IX girls have organized a Tomato Club: Emma Barrett, leader; Edna Scott, Susie Haughaboo, Tillie Spiller, Mary Slack and Fauline Byar.

Miss Yancey has arranged for an expert to instruct the Club in tomato culture and canning.

Miss Alice Lloyd, a Mason County woman, has been appointed by the U. S. Government to take charge of this movement in Kentucky.



Some Intermediate Pupils



Some Primary Pupils

### School Improvement League

MRS. EDW. ROBERTSON.....*President*    MRS. B. O. PICKETT.....*Vice-President*  
 MRS. MINNIE B. DOBYNS.....*Secretary-Treasurer*

These officers, with three committees—Membership, Library, and Social—have done great things for the school. The membership is composed of the mothers, other interested women and the school girls. Dues are fixed at ten cents per month. Other sources of

revenue are donations, entertainments, sales, suppers, etc. Over two hundred dollars have been raised and expended for lighting plant, auditorium chairs, drawing supplies, expenses for school fair exhibits, refreshments for receptions and various other purposes.







FRANK PERRAUT, '99.....*President*    MRS. GLENN SMOOT, '04.....*Secretary*

Any information leading to name and address of alumni may  
be sent to either of above officers at Minerva, Ky.

1895		1904	
Mollie Sue Hawes (Mrs. Len Childress)		Lulu Mae Neville (Mrs. Dawson Willett)	
Bailey McNutt		Alice Robertson (Mrs. Glenn Smoot)	
1897		1905	
Fannie Biggers (Mrs. William E. Fite)		Minnie Greenlee (Mrs. John H. Wraith)	
		Anna Greenlee (Mrs. John Coburn)	
1899		Lena Liston	Lloyd Winter      Herman Donovan
Anna Boyd (Mrs. Harry Smoot)			
Frank Perraut	Lillie Liston	1907	
		Ella Dwyer	Cleo Gillis      Bertha Scott
1901		John White	Ella Weber (Mrs. J. Wentz)      Lucinda Slack
Tucie Robertson (Mrs. George Scott)			Earl Brooks
1902		Robert Pollitt	1908
Mattie Clift (Mrs. Grover White)			Stanley Weaver
1903		Mary Pollitt	1909
Julia Worthington	Edgar Hawes		Florence Parker      Julia Greenlee
	Retta Hawes	Ida Mae Slack	1912
			Allen Robertson      Joseph Dwyer

# ROLL CALL

## Class of 1856 (Minerva College)

The sands in the hourglass of time are slowly disappearing,  
and the bell taps are fast thinning our ranks.

MRS. MARTHA CRAIG COLLINS.....	Augusta, Ky.	MRS. LAURA FRAZEE RUNYON.....	Columbus, Ind.
MRS. MARTHA FRAZEE CUSHMAN.....	Flemingsburg, Ky.	MR. ELZA F. BOYD.....	Minerva, Ky.
MR. JAMES WINTER.....	Elery, Ill.	MRS. SALLIE KIRK BOYD.....	Minerva, Ky.
MR. JOHN J. WINTER.....	Elery, Ill.	MRS. MARY KIRK WINTER.....	Minerva, Ky.
MR. THOS. J. WINTER.....	Maysville, Ky.	MR. JAMES DRAKE.....	Minerva, Ky.
MRS. ALICE THOMAS BOYD.....	Maysville, Ky.	MR. SAMUEL A. FRAZEE.....	Minerva, Ky.
MRS. JULIA KIRK PERRINE.....	Maysville, Ky.	MRS. ELIZABETH ROBERTSON FRAZEE.....	Minerva, Ky.
*MR. D. F. FRAZEE.....	Lexington, Ky.	MRS. JINCIE HENRY REYNOLDS.....	Ripley, Ohio.
MRS. TUCIE ROBERTSON FRAZEE.....	Lexington, Ky.	MRS. MARY BAGBY BOSWELL.....	Aberdeen, Ohio.
MRS. BLANCHE ROBERTSON KING.....	Lexington, Ky.	*MRS. AMANDA KIRK REESE.....	Shelbyville, Ky.
*MR. MARSHALL KING.....	Lexington, Ky.	MRS. ANNIE ROBERTSON DARNELL.....	Millersburg, Ky.
MR. FRANK REYNOLDS.....	Lexington, Ky.	MR. E. K. THOMAS.....	Mooresville, Ind.
MRS. DAMARIUS BOYD REYNOLDS.....	Lexington, Ky.	MR. JAMES F. BLESS.....	Newark, N. J.
MRS. ELIZABETH BOYD REYNOLDS.....	Lexington, Ky.	*MRS. FANNIE DRAKE WORTHINGTON.....	Lair, Ky.
MRS. RACHAEL RUNYON JENNINGS.....	Lexington, Ky.	MRS. ANNA KIRK KAIGHN.....	Dayton, Ky.
MRS. SHEPPIE BLISS ADAMS.....	Indianapolis, Ind.	MRS. VICTORIA SMITH KELLY.....	Wichita, Kans.
MR. THOS. PEPPER.....	Peoria, Ill.	MR. JOHN RUNYON.....	Columbus, Ind.
MR. THOMAS SOWARD.....	Guthrie, Okla.	MR. JOHN WESLEY HENRY.....	Huntington, W. Va.
MRS. MARIA PEPPER VICTOR.....	Covington, Ky.	—	
MRS. MARTHA SMITH BLACK.....	Covington, Ky.		
MRS. MARTHA WINTER HARE.....	Covington, Ky.		

\*Deceased.

## EXCERPTS FROM TOASTS

At a Banquet on the Occasion of Semi-Centennial Reunion of the  
Class of 1856

---

“There is one sad side that we can not and must not forget, and that is that, of those who mingled together where you now are, fifty years ago, the majority have passed over the great divide, and as they march before us in memory, we must lift the hat and bow the head as they pass by.”

JAMES F. BLESS.

“The most important event in the history of this community was the incorporation of Minerva College fifty years ago, and you have acted wisely in making a Jubilee Celebration of this great event. This splendid school has, from its beginning to this good hour, been a pillar of strength to the town of Minerva. It

has been a great beacon light to this whole section of the counties of both Mason and Bracken, shedding its beneficent rays far and wide, and inciting a laudable inspiration in the minds of boys and girls who long for opportunities to reach out after and grasp the prizes of life.”

HON. CLARENCE L. SALLEE.

“In conclusion, let me say, if I had a voice that would vibrate from the Atlantic to the Pacific, I would send it forth this afternoon, across this Continent of ours, echoing from hill to hill, and would shout these words: ‘Long live the remnant of the Class of 1856, and Old Minerva College.’ ”

DR. S. E. POLLITT.





C. L. Mains

S. E. Pollitt

MAINS & POLLITT  
The Big General Store



MINERVA, KENTUCKY

DR. F. D. WYLIE

*Dentist*

*Modern Dentistry in all its Phases*

RIPLEY, OHIO

A. G. SULSER

*Fire Insurance*

All Kinds of Town and Farm Property Insured in

The Largest and Strongest Fire Insurance Agency  
in this Part of Kentucky.

STATE NATIONAL BANK BUILDING

205 Court Street      Phone No. 1      Maysville, Ky.

J. WESLEY LEE

*The Good Clothes Man*

Hart, Schaffner & Marx  
Clothing

Shoes—The Stetson and The Crossett  
*The Best You Can Buy*

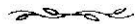
Corner Market and Second, MAYSVILLE, KY.

# Ripley National Bank

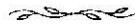
RIPLEY, OHIO

Capital, \$100,000

M. L. Kirkpatrick . . . . . President  
A. W. Francis . . . . . Vice-President  
J. E. Kirkpatrick . . . Vice-President  
J. S. West . . . . . Vice-President  
C. D. Norris . . . . . Cashier



**3%** Interest Paid on  
Savings Accounts



We want and will appreciate your  
Banking Business

# State National Bank

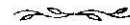
MAYSVILLE, KY.

---

Chas. D. Pearce . . . . . President  
E. T. Kirk . . . . . Vice-President  
Hamlet Sharp . . . . . Cashier

---

A Safe Place for Your Money



Men of Character and Financial  
Responsibility are behind it

# C. J. OLSEN & SONS

==== PITTSBORO, INDIANA =====

## Manufacturers *of* School Wagons

---

THEY are used in Mason County. See the picture in this book. All other School Wagons are imitators of the original and genuine Olsen Wagon. More Olsen Wagons used than all other makes combined. There are 1,100 Olsen Wagons now in use.      ❁      ❁      ❁

---

W. C. CORYELL, MINERVA, KENTUCKY

Representative for the State of Kentucky



A. G. SULSER

*Fire Insurance*

COURT STREET  
MAYSVILLE, KY.

JOHN BRISBOIS  
THE FURNITURE MAN

*Prices are Right*  
*Satisfaction Guaranteed*

42 W. Second St. MAYSVILLE, KY.

T. M. DORA CO.  
GENERAL MERCHANDISE

*The Old Reliable Store*

GERMANTOWN, KY.

GENUINE BARGAINS  
IN FURNITURE

McIlvain, Humphreys & Knox

THE SWEEPER VAC MEN.

*Funeral Directors and Embalmers*

PHONE 250

207 SUTTON STREET  
MAYSVILLE, KY.

# STANDARD BANK

MAYSVILLE, KY.

J. N. KEHOE, *President* L. G. MALTBY, *Vice-President*  
J. B. DURRETT, *Cashier*

## Statement, February 4, 1913

Resources	Liabilities
Loans and Discounts, \$581,583.03	Capital Stock . . . . . \$100,000.00
United States and Other Bonds . . . . . 17,390.00	Surplus and Undivid- ed Profits . . . . . 28,187.74
Cash on Hand and Due from Banks . . . 214,477.06	Due Banks . . . . . 6,137.70
Current Expenses . . . . . 1,022.27	Deposits . . . . . 701,566.64
Overdrafts . . . . . 6,419.72	
Banking House and Fixtures . . . . . 15,000.00	
\$835,892.08	\$835,892.08

### DIRECTORS

E. L. WORTHINGTON	E. C. SLACK	S. P. BROWNING
L. G. MALTBY	S. F. REED	J. N. KEHOE
E. G. DOWNING	J. H. CLARKE	J. B. DURRETT

*3 Per Cent Interest Paid on Savings Accounts  
Would like to have your account, large or small*

# The JOHN GROSSIUS FURNACE COMPANY



Manufacturers  
of  
Warm Air  
Furnaces  
and  
School  
Room  
Ventilating  
Heaters



Established Sixty Years

318-326 East Eighth Street ✻ CINCINNATI, OHIO

**Statement of Condition**  
of the  
**Bank of Maysville**  
(National Banking Association)  
**Maysville, Kentucky**

February 27, 1913

Resources	Liabilities
Loans . . . . . \$561,449.84	Capital Stock . . . \$100,000.00
Overdrafts . . . . . 841.41	Surplus . . . . . 9,000.00
U. S. Bonds . . . . . 100,000.00	Undivided Profits. . 2,427.17
Other Bonds . . . . . 47,118.87	Individual Deposits
Banking House . . . . 15,000.00	upon which <i>No</i>
Cash and Due	<i>Interest is Paid</i> 687,350.07
from Banks . . . . . 161,500.39	Due Other Banks . . 14,268.27
Due from the U.S.	Circulation . . . . . 76,700.00
Treasurer 5 per	
cent Redemption	
Fund . . . . . 3,835.00	
\$889,745.51	\$889,745.51

J. F. BARBOUR . . . . .	. . . . . <i>President</i>
A. M. J. COCHRAN . . . . .	. . . . . <i>Vice-President</i>
R. K. HOEFLICH . . . . .	. . . . . <i>Cashier</i>
GEO. T. BARBOUR . . . . .	. . . . . <i>Assistant Cashier</i>

**The Mutual Benefit**  
**Life Insurance Co.**

of Newark, New Jersey

**The Leading Annual Dividend Company**

Organized 1845 . . . Assets over \$150,000,000.00

J. W. ELGIN, *General Agent*  
MAYSVILLE, KY.

*North Eastern Kentucky General Agency*

*Mason County Representatives*

CHAS. A. COAKWELL . . . . .	Mayslick
C. CALVERT EARLY . . . . .	Helena
HUMPHREY TAYLER . . . . .	Washington
THOS. E. FOLEY . . . . .	Minerva

**Consult with one of the above**  
**before buying insurance**

# HOME

**T**HE Big House where you can always get in; with the unequalled light; with the real sorters; where every basket is properly packed.

We did not have a single reclamation in 1912-13.

The house that led from start to finish in pounds and prices.

We solicit your business for 1913-14, believing we can serve your interests best.

Owned and operated by home people. Our main object is to get you the most for your tobacco and you be at the least possible expense.

**Come Home**, it is always the best place.

J. N. KEHOE, President

J. C. EVERETT, Vice-President

J. W. FITZGERALD, Secy.-Treas.

#### DIRECTORS

J. N. KEHOE      JOHN E. BOULDIN      JACOB ROSER

J. C. EVERETT      J. W. FITZGERALD

## “Readin’, ‘Ritin’ and ‘Rithmatic”

**T**HE Golden Rule and the knowledge of a “Square Deal” are essential parts of your education. Learn them well, and when in need of anything in our line, let the name “Square Deal” be your guide-post.

Whether your avocation be the home or the farm, we can supply you with the necessary tools and implements, and invite you to come in. Our prices are right, our goods guaranteed and our motto “A Square Deal.”

---

## Mike Brown

The “Square Deal” Man

---

*Buggies, Harness, Farm Implements  
Hardware, Washing Machines, Sew-  
ing Machines, Acetylene Lights, and  
everything you need*

## *Young Man, Learn to Save*

It will be a valuable part of your education.

## Bank of Germantown

GERMANTOWN, KY.

*3% Interest on Time Deposits*

## **The Daily Independent**

JAMES PURDON, Business Manager

*First in Circulation and Influence*

Job Printing at Reasonable Rates

MAYSVILLE, KY.

J. J. PERRINE, President    W. R. NEWELL, Vice-Pres.  
C. L. WOOD, Cashier

## *Farmers and Traders Bank*

MAYSVILLE, KY.

*Favorite Bank of the West End People*

## **Public Ledger**

*MAYSVILLE'S LEADING  
DAILY NEWSPAPER*

ARTHUR F. CURRAN, Editor and Proprietor

## C. F. McNamara

6½ West Front St.  
MAYSVILLE, KY.

Will be pleased to show you the strongest line of Made-to-Measure Clothes in the World. We represent ED. V. PRICE & CO. They specialize on Suits Made to Your Measure from \$14.00 to \$25.00. Prospective graduates would do well to see me before purchasing elsewhere.

*Bring Me Your Dry Cleaning*

All Work Done as Fine as Modern Machinery  
Can Make It.

*For variety and general excellence in Ladies' and Children's Ready-to-Wear Apparel, high-class Dry Goods, Window Draperies, Floor Coverings, etc., go to*

## Hamilton & Stiefvater

Phone 212

AUGUSTA, KY.

Mail Orders Given Prompt and Careful Attention

## CITIZENS NATIONAL BANK

RIPLEY, OHIO

Capital, = = = \$100,000.00  
Surplus and Profits, - 66,000.00

J. ROBERT STIVERS, Prest.    F. A. STIVERS, Cashier  
GEORGE FRANK, Vice-Prest.    H. G. MADDOX, Asst. Cashier

## AUGUSTA GERMAN BANK

AUGUSTA, KY.

Capital, \$25,000.00    Surplus, \$12,500.00

*Pays 3% Interest on Time Deposits*

Solicits all Business Consistent with Sound Banking

*When in Augusta, Kentucky, visit*

**C. HUNTER'S  
Blue Ribbon Grocery**

HEADQUARTERS FOR

*Fine Groceries, Fruits and Vegetables*

Your Country Produce taken in same as cash.

Full line of Garden and Field Seeds.

Telephones 262 and 235

*Footwear*

*Clothing*

**MILNER'S**

*Your Kind of a Store*

**Satisfaction, or Your Money Back  
IS OUR GUARANTEE**

**J. M. MILNER & SON**

One Priced Merchants

Augusta, Ky.

*Furniture*

*Dry Goods*

*Prices are Right*

**Frank Owens Hardware Co.**

**FARM *and* GARDEN  
TOOLS, PLOWS**



**MAYSVILLE, KENTUCKY**

**HERBERT WHITLEY**

HEADQUARTERS FOR

*Hats, Caps, Shoes, Clothing  
and Gents' Furnishings*

**RIPLEY, OHIO**

ESTABLISHED 1897

TELEPHONE 224

## W. N. EVANS

EXCLUSIVE DEALER IN

*Dry Goods and Ladies' Wear*

We Make a Specialty of Materials  
for Confirmation and Graduation  
Outfits, Coming Out Gowns and  
Trousseaux.

AUGUSTA, : : : : KENTUCKY

## W. HOLTON KEY REAL ESTATE DEALER

Sells 50% of Property  
Listed For Sale

SEE HIM AT  
STANDARD BANK BUILDING  
MAYSVILLE, KY.

## GEO. H. FRANK CO. MAYSVILLE'S FOREMOST CLOTHIERS

"Absolute Satisfaction  
or Your Money Back"

GEO. H. FRANK CO.

## D. HECHINGER CO. MAYSVILLE, KY.

*Eastern Kentucky's largest and  
best Clothing and Shoe Store.  
In fact known to most people  
within a radius of fifty miles  
from Maysville.*



J. C. EVERETT

C. F. LOYD

TELEPHONE 38

## J. C. EVERETT & CO.

DEALERS IN

**GRAIN, SEEDS, FLOUR, FEED  
AND ROOFING**

Nos. 16, 18, 20 and 22 East Second St.  
MAYSVILLE, KY.

**Diamonds, Watches, Clocks  
Jewelry, Cut Glass and Silver**

A COMPLETE LINE  
ALWAYS IN STOCK

See Us for Graduation and Wedding Presents

***Chas. W. Traxel & Co.***

**JEWELERS**

**Phone 395**

***Maysville, Ky.***

# WHITE LEGHORNS

FROM A HEALTHY  
FARM RAISED FLOCK

*Eggs, 75c per Setting  
Cockerels, \$1.00*

Registered Short-Horn  
Cattle

**STANLEY F. REED**

**MAYSVILLE, KY.**



**O**UR Photographs are more than good photographs— they are true portraits bringing out all that is best in character and individuality ❖ ❖ ❖ ❖

**Brosee, Photographer, Maysville, Ky.**

THE DIRECTORS OF

**The Citizens State Bank**

DOVER, KY.

The West End Bank—The Home Bank

Invite you to do a part of your banking business with them

PROMPT SERVICE

DIRECTORS

GOOD TREATMENT

Walter Worthington  
Sam. A. Frazee  
Frank Collins

W. J. Adams  
W. H. Mackoy  
A. D. Cole

J. T. Holton  
C. M. Devore  
J. Elgin Anderson

**JOHN W. EITEL, Jailer**

**Brothers & Calvert**

Augusta, Ky.

LIVERY

**FUNERAL DIRECTORS AND  
EMBALMERS**

UNDERTAKING IN ALL ITS BRANCHES  
PROMPTLY ATTENDED TO

**Bert McKibben**

Leading Stove and Tinware Dealer of  
Augusta, Ky.

Hardware, Stoves, Tin and  
Graniteware

All of Highest Quality and at  
Prices that Save You Money

Wise  
furnaces  
Make  
Warm  
friends

Phone 275

**W. H. REES**  
**ATTORNEY AT LAW**

220 Court Street  
MAYSVILLE

**DR. C. G. STEEN**  
*Dentist*

AUGUSTA, KY.

**W. H. RICE, County Judge**

JOHN T. PARKER

JAMES M. RILEY

**PARKER & RILEY**  
**LIVERY**  
**SALE and BOARDING STABLE**

Fancy Turnouts a Specialty  
Horses Bought and Sold—General Stock Exchange  
Courteous Service Always

Phone 174

Sutton St., Near Second

MAYSVILLE, KY.

**DR. T. H. N. SMITH**  
*Dentist*

No. 5 West Second Street  
MAYSVILLE, KY.

HOURS—7 a. m. to 6 p. m.

At Night, Phone 310, at Residence

C. F. McNAMARA

High-Class Tailor

Newest Ideas in Foreign and Domestic Woolens

SUITS, \$14 to \$25

West Front Street

MAYSVILLE, KY.

THOS. D. SLATTERY

Attorney at Law

MAYSVILLE, KY.

J. J. OWENS, County Clerk

ALLAN D. COLE

Lawyer

212 Court Street, MAYSVILLE

J. M. COLLINS

Lawyer

216 Court Street

Phones :  
Office 366, Res. 544

MAYSVILLE

**FRANK P. O'DONNELL**  
**ATTORNEY AND COUNSELLOR**  
**MAYSVILLE, KY.**

**SUITE 8, FIRST NATIONAL BANK BUILDING**

## **MERZ BROS.**

**DRY GOODS, CARPETS AND NOTIONS**

**MAYSVILLE'S BIGGEST, BEST  
AND BUSIEST STORE**

**YOU ARE INVITED TO INSPECT OUR ESTABLISHMENT**

# **DR. J. A. STEEN, DENTIST, RIPLEY, OHIO**

**M. F. COUGHLIN**

**THOMAS A. HIGGINS**

**CHARLES A. SLATTERY**

**PHONE 31**

## **COUGHLIN & Co.**

**UNDERTAKING AND EMBALMING**  
**LIVERY, SALE AND**  
**BOARDING STABLE**

**AMBULANCE SERVICE ASSURES YOUR PATIENT EVERY ELEGANCE  
AND COMFORT. CALLS ANSWERED ANY HOUR**

**109 MARKET ST., AND 8, 10, 12 FRONT ST., MAYSVILLE, KY.**

## **THE MAYSVILLE SCHOOL OF PHONOGRAPHY**

**First National Bank Building**

**Commercial Course, including shorthand  
and typewriting, bookkeeping, commer-  
cial correspondence and commercial  
spelling. For further information, apply to or address**

**MISS CHARLOTTE CARTMELL, Principal**  
**30 West Front Street** **MAYSVILLE, KY.**

