

**MULTIPLE NOMINATION HISTORIC DISTRICT SUMMARY FORM**

**NRA/THEMATIC NOMINATION TITLE:** Eastside Multiple Resource Area

**HISTORIC DISTRICT NAME:** Helentown Historic District

**OWNER OF PROPERTY:** Multiple ownership

(On Continuation Sheets list all properties by address which are included within the district and provide the names and addresses of their owners.)

**DESCRIPTION:**

<b>Condition</b>		<b>Check one</b>	<b>Check one</b>
<input checked="" type="checkbox"/> excellent	<input checked="" type="checkbox"/> deteriorated	<input type="checkbox"/> unaltered	<input checked="" type="checkbox"/> original site
<input checked="" type="checkbox"/> good	<input type="checkbox"/> ruins	<input checked="" type="checkbox"/> altered	<input type="checkbox"/> moved date _____
<input checked="" type="checkbox"/> fair	<input type="checkbox"/> unexposed		

Describe the present and original (if known) physical appearance  
(Use Continuation Sheets)

**SIGNIFICANCE**

<b>Period</b>	<b>Areas of Significance—Check and justify below</b>			
<input type="checkbox"/> prehistoric	<input type="checkbox"/> archeology-prehistoric	<input type="checkbox"/> community planning	<input type="checkbox"/> landscape architecture	<input type="checkbox"/> religion
<input type="checkbox"/> 1400-1499	<input type="checkbox"/> archeology-historic	<input type="checkbox"/> conservation	<input type="checkbox"/> law	<input type="checkbox"/> science
<input type="checkbox"/> 1500-1599	<input type="checkbox"/> agriculture	<input type="checkbox"/> economics	<input type="checkbox"/> literature	<input type="checkbox"/> sculpture
<input type="checkbox"/> 1600-1699	<input checked="" type="checkbox"/> architecture	<input type="checkbox"/> education	<input type="checkbox"/> military	<input type="checkbox"/> social/humanitarian
<input type="checkbox"/> 1700-1799	<input type="checkbox"/> art	<input type="checkbox"/> engineering	<input type="checkbox"/> music	<input type="checkbox"/> theater
<input checked="" type="checkbox"/> 1800-1899	<input type="checkbox"/> commerce	<input checked="" type="checkbox"/> exploration/settlement	<input type="checkbox"/> philosophy	<input type="checkbox"/> transportation
<input checked="" type="checkbox"/> 1900-	<input type="checkbox"/> communications	<input type="checkbox"/> industry	<input type="checkbox"/> politics government	<input checked="" type="checkbox"/> other (specify) Ethnic: German
	<input type="checkbox"/> invention			

**Specific dates** Ca. 1840-1935      **Builder/Architect** N/A

**Statement of Significance (In one paragraph)**  
(Use Continuation Sheets)

**GEOGRAPHICAL DATA**

**Acresage of nominated property** Approx. 115.5 acres  
**Quadrangle name** Covington KY/Newport KY      **Quadrangle scale** 1:24,000

**UTM References**

<b>A</b>	<u>16</u>	<u>715500</u>	<u>4328225</u>	<b>B</b>	<u>16</u>	<u>716045</u>	<u>4328425</u>
<b>C</b>	<u>16</u>	<u>715758</u>	<u>4327520</u>	<b>D</b>	<u>16</u>	<u>715885</u>	<u>4327425</u>
<b>E</b>	<u>16</u>	<u>716105</u>	<u>4327700</u>	<b>F</b>	<u>16</u>	<u>716260</u>	<u>4327985</u>
<b>G</b>				<b>H</b>			

**Verbal boundary description and justification**  
(Use Continuation Sheets)

**DISTRICT MAPS ATTACHED:**

- District Boundary Map Showing Contributing & Noncontributing Properties.
- District Map Showing Location & Direction of Numbered Photographs.

United States Department of the Interior  
National Park Service

National Register of Historic Places  
Inventory—Nomination Form



Austinburg Historic District (Eastside MRA)

Continuation sheet Covington, Kenton Co., KY

Item number

*This should read  
Helentown Historic  
District, both here  
and on next page*

1

Verbal Boundary Description and Justification  
Helentown Historic District

The Helentown Historic District boundary is drawn:

Beginning at the northwest corner of Wheeler and E. 15th St., thence westwardly 525' across Garrard to the northwest corner of Garrard and E. 15th St., thence 250' southwardly to a point, thence 150' eastwardly to a point, thence 75' southwardly to a point, thence 50' westwardly to a point, thence 215' southwardly across Patton to a point, thence westwardly 125' across Garrard to a point, thence 175' southwardly to the northwest corner of Garrard and E. 16th St., thence 200' westwardly along the northern right-of-way of E. 16th St. to the northwest corner of Collins and E. 16th St., thence 225' southwardly to a point, thence 75' westwardly to a point, thence 50' southwardly to a point, thence 250' westwardly to Scott Blvd., thence 300' northward to the northeast corner of Scott and E. 16th St., thence 275' westwardly to the northeast corner of Madison and E. 16th St., thence northwardly along Madison 360' to the northern property line of the Madison Ave. Christian Church, thence eastwardly 125' to an alley, thence northwardly 100' to a point, thence westwardly 75' west to a point, thence 450' northwardly across Martin St. and across Byrd St. to a point, thence 15' westwardly to a point, thence 25' northwardly to a point, thence 60' eastwardly to Wood St., thence 550' northwardly to a point, thence 75' westwardly to a point, thence 100' northwardly to a point, thence 15' westwardly to a point, thence 150' northwardly across E. 12th St. to a point, thence 275' westwardly to a point, thence 325' northwardly to E. 11th St., thence 500' eastwardly to Scott Blvd., thence 75' southwardly to a point, thence 225' eastwardly to a point, thence 100' southwardly to a point, thence 75' westwardly to a point, thence 250' southwardly across E. 12th St. to a point, thence 300' eastwardly across Greenup, thence 250' northwardly along the eastern right-of-way of Greenup St. to a point, thence westwardly 125' to a point, thence 75' northwardly to a point, thence eastwardly 125' to a point, thence north 50' to the southern right-of-way of E. 11th St., thence eastwardly 725' to the western right-of-way of Wheeler, thence 350' southwardly to E. 12th St., thence 200' eastwardly along the southern right-of-way of E. 12th to an alley, thence southwardly 825' along the alley right of way to a point, thence eastwardly 200' to an alley, thence 200' southwardly to a point, thence 125' westwardly across Maryland to a point, thence 225' westwardly across Wheeler to a point, thence 100' south to the point of beginning.

The Helentown Historic District boundary is drawn to include the majority of contributing structures associated with the historic neighborhood of Helentown. On the north the district is bounded by modern structures, the Downtown Commercial Historic District and Emery-Price Historic District. On the west the district runs behind modern or altered commercial buildings on Madison Avenue with the exception of the Madison Ave. Christian Church which is historically

**United States Department of the Interior  
National Park Service**

**National Register of Historic Places  
Inventory—Nomination Form**

Austinburg Historic District (Eastside MRA)

Continuation sheet Covington, Kenton Co., KY

Item number 10

Page 2

For NPS use only  
received NOV 1 1987  
date entered

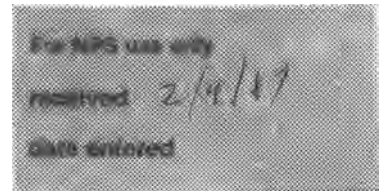
associated with the community. On the south the boundary is defined by the CSX Railroad embankment and right-of-way and the boundary is also drawn to exclude a modern factory. On the east the boundary is defined by modern or altered structures adjacent to the Licking River Floodwall.

United States Department of the Interior  
National Park Service

National Register of Historic Places  
Inventory—Nomination Form

Helentown Hist. Dist. (Eastside MRA)

Continuation sheet Covington, Kenton Co., KY Item number 7



Page 1

Helentown Historic District

Description

The Helentown Historic District contains 840 buildings along or part of 37 blocks in Covington, Kentucky. The district contains an excellent collection of pre-1900 residential architecture constructed in the Greek Revival, Queen Anne, Italianate and Colonial Revival designs. Only 151 buildings in the district are non-contributing. Commercial use is found primarily on corners and there are few major intrusions in the district.

The area encompassed by the district is composed of rolling terrain with the streets divided on an essentially north/south and east west grid. There is a slight jog in north/south streets south of 15th Street to conform with early subdivisions. To the north of the district is the Downtown Commercial District (NR, 1983), the Jacob Price Projects and the southern boundary of the Emery-Price district. To the west is Madison Avenue, on the south is the C & O railroad embankment and on the east is the Licking River Floodwall.

East/West Streets

E. 11th Street

Overview: E. 11th Street in the district contains 18 contributing and 8 non-contributing buildings.

Detailed Description: E. 11th Street forms the northern boundary of the Helentown District. Parts of four blocks are in the district between Madison and Wheeler streets. Between Madison and Scott are four contributing structures including two fine Queen Anne houses. Also on this block is the Covington Latin School which has been a major school in the community for many years. The present building was constructed after 1935 and is non-contributive due to age. Past Scott the boundary includes the old Citizens Telephone Exchange which faces Scott Boulevard and two Greek Revival style commercial buildings at the corner of Greenup Street. The Citizens Telephone Building is a two-story limestone late Renaissance Revival design with arched windows on the first floor and pedimented rectangular windows on the second floor (Photo 38). Designed by architect Harry Hake, the building has rusticated stone blocks on the first floor and an elaborate cornice at the roofline.

Between Greenup and Garrard are six buildings, five of which are late Greek Revival style buildings. Within this block is one intrusion, the First Born Church. In the 300 block of E. 11th are eleven buildings with vernacular, Italianate and late Greek Revival dwellings represented on the block. This block also contains an intrusion, the Macedonia Baptist Church.

**United States Department of the Interior  
National Park Service**

**National Register of Historic Places  
Inventory—Nomination Form**

Helentown Hist. Dist. (Eastside MRA)

Continuation sheet Covington, Kenton Co., KY Item number 7

Page 2

For NPS use only  
received 2/9/87  
date entered

E. Bush Street

**Overview:** E. Bush Street in the district contains 26 contributing and 12 non-contributing buildings.

**Detailed Description:** E. Bush Street is a three block street between Greenup and Wheeler. There are no structures existing in the 100 block but in the 200 and 300 blocks are 36 residences. These dwellings are primarily of frame construction with many alterations such as modern siding and new porches. Bush Street was primarily a street of working class residents with the Philips and Jordan Iron works located at the end of the street. Most buildings on Bush Street are simple Greek Revival or Italianate forms. The 300 block is very cohesive while the 200 block contains several vacant lots.

E. 12th Street

**Overview:** E. 12th Street in the district contains 56 contributing and 5 non-contributing buildings.

**Detailed Description:** Five blocks of E. 12th Street between Madison Avenue and Wheeler Street are in the district. This street is one of the major east/west connectors in this section of Covington and at the east end of the district it connects with a bridge over the Licking River leading to Newport. In the block between Madison and Wood is one structure, the three-story Bishop Toebbe House built prior to 1877 and remodeled into the Queen Anne style (Photo 37). This house is one of the more imposing Queen Anne structures in the district and features bay windows, an elaborate door surround and pyramidal tower on the main facade. In the block between Wood and Scott are four altered but contributing structures. The south side of the 100 block contains an impressive row of ca. 1860-70, brick late Greek Revival and Italianate dwellings (Photo 31). In this row are twelve contributing buildings, several of which have been converted into commercial use. The boundary is drawn to exclude the north side of this block which is now an open park. The block was originally the site of St. Joseph's Catholic Church and school, one of the most significant churches in the area in the late 19th century. East of Greenup Street are two blocks with 43 residences. The majority of these are brick late Greek Revival and Italianate homes built prior to 1877. Interspersed with the brick dwellings are a number of frame structures, many of which have been altered. These blocks also have more vacant lots than usual in the district.

Trevor Street

**Overview:** Trevor Street in the district contains 47 contributing and 6 non-contributing buildings.

**Detailed Description:** Trevor Street is a narrow (28' to 40') street which runs between Scott Boulevard and Wheeler Street. These homes are one to two-story

United States Department of the Interior  
National Park Service

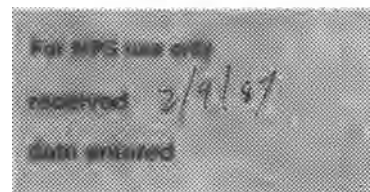
# National Register of Historic Places Inventory—Nomination Form

Helentown Hist. Dist. (Eastside MRA)

Continuation sheet Covington, Kenton Co., KY

Item number 7

Page 3



brick and frame structures located on narrow lots. In the 100 block are twelve brick and frame vernacular and Greek Revival structures with two non-contributing due to alterations. The 200 block contains eleven residences, many of which are contributing but altered. In the 300 block is a fine row of one and two-story brick ca. 1880 Italianate and Greek Revival cottages on the north side of the street (Photo 43).

## E. 13th Street

Overview: E. 13th Street in the district contains 54 contributing and 23 non-contributing buildings.

Detailed Description: Parts of five blocks of E. 13th Street are in the district between Wood Street and Maryland Avenue. E. 13th is a wide (50') street and is a secondary east/west connector between Madison and Maryland Avenues. In the short block between Wood and Scott are five frame rowhouses on the south side which are contributing but altered. There are no structures on the north side of this block. In the 100 block between Scott and Greenup are 20 single and multi-family dwellings (Photo 32). Most of these are pre-1877 late Greek Revival designs of brick construction. The 200 block has 19 dwellings with Greek Revival, Queen Anne and Italianate detailing. The 300 block is also consistent in its architecture with late Greek Revival dwellings predominating. At 312 and 316 are two of the few modern residences built in the district.

## Pleasant Street

Overview: Pleasant Street in the district contains 30 contributing and 22 non-contributing buildings.

Detailed Description: Pleasant Street is a narrow (40') street which extends from Scott Boulevard to Wheeler Street. Pleasant Street is characterized by frame houses, many of which have been altered. There are also numerous vacant lots along the street. Despite the loss of historical fabric on many of the residences the street retains a number of contributing brick Italianate and vernacular dwellings from the late 19th century. In the 100 block are 10 single family dwellings; in the 200 block are 16 residences; and in the 300 block are 23 residences. In the 300 block many of the frame buildings on the north side of the street are non-contributing due to alterations.

## Byrd Street

Overview: Byrd Street in the district contains 44 contributing and 11 non-contributing buildings.

Detailed Description: Byrd Street was developed and settled later than the streets to the north. On the 1877 map there are no structures along Byrd Street with most construction occurring between 1880 and 1910. Byrd is a small alley

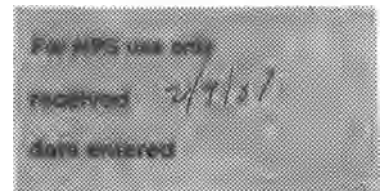
United States Department of the Interior  
National Park Service

# National Register of Historic Places Inventory—Nomination Form

Helentown Hist. Dist. (Eastside MRA)

Continuation sheet Covington, Kenton Co., KY Item number 7

Page 4



between Wood and Greenup with no major structures. East of Greenup the street becomes 50' wide and runs east until it ends at the C&O embankment. Parts of five blocks are in the district. In the 200 block are 13 residences with a few Queen Anne and Italianate designs represented. The block also contains three identical ca. 1905 Colonial Revival "Foursquare" designs at 212-16 Byrd with hipped roofs and small porches (Photo 44). In the 300 block between Garrard and Wheeler are 32 residences in a variety of vernacular and Bungalow styles from the early 20th century (Photo 41). Most of these are simple designs with minimal detailing. The 400 block continues the same type of designs in the 13 buildings on the block. Adjacent to this end of Byrd are numerous post-1935 structures along Maryland Avenue.

## Martin Street

**Overview:** Martin Street in the district contains 22 contributing and 3 non-contributing buildings.

**Detailed Description:** Martin Street is a two block street between Madison and Greenup. Martin Street's location between the street car lines along Madison and Scott resulted in its early settlement and many of its homes are listed on the 1877 map. The street's early age is also seen in its northwest/southeast orientation rather than laid out on the standard east/west grid. Between Madison and Scott are nine late Greek Revival and Italianate dwellings and duplexes dating from ca. 1860-70. At 10-12 Martin is a good Second Empire style duplex constructed ca. 1875. In the 100 block are 14 19th century dwellings on the north side of the street (Photo 52). On the south side is only one structure but it is a fine ca. 1880 Second Empire style duplex.

## E. 15th Street

**Overview:** E. 15th Street in the district contains 38 contributing buildings and 1 non-contributing building.

**Detailed Description:** E. 15th Street is another major east/west street between Madison and Eastern Avenue. Parts of 5 blocks are included in the district. Early settlement of E. 15th Street was sparse with few structures shown on the 1877 map. Between Madison and Scott are nine Italianate and Queen Anne style dwellings built ca. 1880-90. In the 100 block are several notable structures. At 112-16 is the Victorian Gothic style Shinkle Methodist Church which has served the local congregation for over 100 years (Photo 48). This brick church replaced a frame church on this site and is distinguished by Gothic arching and a pyramidal tower. At 118-20 is an imposing three-story Second Empire duplex built ca. 1885 (Photo 50). On the south side of the street are four Queen Anne and Italianate residences. In the 200 block are 17 structures constructed from 1870 to 1930 in a variety of styles. The most notable is the Dutch design at 210 E. 15th which displays a Dutch gable roof and extensive terra cotta decoration (Photo 42). East of Garrard only the north side of the street is included in the

United States Department of the Interior  
National Park Service

# National Register of Historic Places Inventory—Nomination Form

Helentown Hist. Dist. (Eastside MRA)

Continuation sheet Covington, Kenton Co., KY Item number 7

Page 5

For info use only

received 4/1/87

data entered

district and these blocks primarily contain ca. 1920 Bungalow style residences. The district boundary is drawn to exclude the modern factory on the south side of the street.

## E. 16th Street

Overview: E. 16th Street in the district contains 19 contributing buildings.

Detailed Description: E. 16th Street is the southernmost east/west street in the Helentown District. Settled after 1877, the street extends from Madison Avenue to Garrard Street before making a jog below the embankment and entering Austinburg. Only 13 residences are located along the four blocks from Madison to Collins. All of these residences are ca. 1880-90 Queen Anne and Italianate designs. Between Collins and Garrard are 6 ca. 1920 Bungalows located on the north side of the street (Photo 49).

## North/South Streets

### Madison Avenue

Overview: Madison Avenue in the district contains 13 contributing and 2 non-contributing buildings.

Detailed Description: Madison Avenue is one of the major north/south streets in Covington and the Helentown District overlaps the street in several areas on its western boundary. Commercial development along Madison in recent decades has resulted in the demolition of many of its older mansions and only a few blocks retain their original historic fabric. Part of the 1100 block is within the district to include the significant St. Mary's Cathedral and School. The Cathedral was begun in 1894 and completed in 1910 by architect Leon Coquard of Detroit (Photo 35). Its French-Gothic design was modeled after Notre Dame of Paris and it is one of the most significant churches in the Midwest (NR 1973). Adjacent to the church is the Bishop's house which was remodeled in the Gothic design and across the street is the Catholic School (Photo 36). Adjacent to the school is a Queen Anne style residence and 3 commercial Italianate structures. The store at 1115 Madison is particularly intact with pedimented sheet metal decoration and its original recessed cast iron storefront (Photo 55).

Part of the 1500 block on the east side of Madison is also included. At 1530 Madison is the Madison Avenue Christian Church, a fine Neo-Classical style church built in 1912 (Photo 40). The church was designed by Weber Brothers architectural firm and it has not been significantly altered. South of the church are 6 Queen Anne and Italianate residences and commercial buildings. Across the street from this block is a Masonic Temple built in 1954 and designed by architect E.C. Landberg. Although not included in the district, the building's eclectic blend of Middle Eastern architectural styles is a unique addition to the street.



United States Department of the Interior  
National Park Service

National Register of Historic Places  
Inventory—Nomination Form

Helentown Hist. Dist. (Eastside MRA)

Continuation sheet Covington, Kenton Co., KY Item number 7

Page 6

For NPS use only

received 2/4/87

date entered

Scott Boulevard

Overview: Scott Boulevard in the district contains 89 contributing and 22 non-contributing buildings.

Detailed Description: Scott Boulevard is an important north/south street in Covington and it contains some of the most notable architecture in the Helentown District. Most of Scott Boulevard was settled after 1850 and was a preferred location due to the wide street and addition of streetcar lines after 1870. Most of the residences constructed along the street are two-story brick structures built in the late Greek Revival, Italianate, Second Empire and Queen Anne styles. A number of the larger structures were built as multi-family duplexes or apartments.

In the 1100 block of Scott is a Second Empire and 2 Italianate design houses built 1875-80 on the west side of the street. On the east side all early residences were removed for the construction of the Citizens Telephone Company building in 1922. This building is a Neo-Classical style structure with an addition on the south side completed in 1937. Across Bush Street is the Bishop Howard School, a Neo-Classical design building completed in 1928 by architects Kunz and Beck (Photo 34). The school has a glazed brick facade with both rectangular and arched windows. The main entrance is recessed within a two-story arch and has a Doric column door surround. This school is all that remains from the St. Joseph's Cathedral complex which stood on this block at the turn of the century.

After crossing E. 12th Street, Scott becomes primarily residential in character. In the 1200 block are 16 structures of which 9 pre-date 1877. Most designs are of the Italianate style and are of brick construction. At 1211-17 Scott is a large three-story Italianate rowhouse with extended bay windows, decorative hood molding and gable dormer windows (Photo 30). In the 1300 block to Pleasant Street are five pre-1877 structures on the east side built in Italianate designs. On the west side most of the 6 residences were built ca. 1885-95 in Italianate and Queen Anne designs. In the 1300 block past Pleasant are several large lots containing significant dwellings (Photos 28, 46). At 1341-43 and 1337-39 Scott are large three-story Second Empire duplexes constructed between 1877 and 1886 (51). At 1333 Scott is a fine Italianate residence built ca. 1870 with an original milled porch with a conical roof. Other homes on the street are also excellent examples of the Queen Anne and Second Empire styles.

In the 1400 block are 15 structures the majority of which pre-date 1877. All of the buildings on the west side are Italianate or Queen Anne designs (Photo 47). On the east side are several dwellings non-contributing due to alterations. In the 1500 block of Scott are 15 residences and several non-contributing intrusions. Most of the frame dwellings on the street were built ca. 1865-75 while the brick residences were built after 1877. At 1504 and 1525 Scott are

United States Department of the Interior  
National Park Service

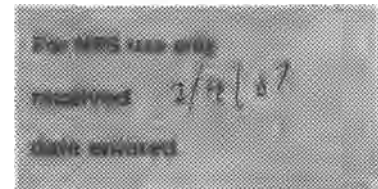
National Register of Historic Places  
Inventory—Nomination Form

Helentown Hist. Dist. (Eastside MRA)

Continuation sheet Covington, Kenton Co. KY

Item number 7

Page 7



modern commercial buildings and at 1518 is the Fourth District Public School built in 1939. The Fourth District School displays some fine Art Deco detailing but is non-contributing due to age. At the corner of E. 16th and Scott the boundary crosses to include only residences on the east side of the street. This row of 7 structures between E. 16th and the railroad embankment are all Queen Anne style residences built ca. 1890.

Greenup Street

Overview: Greenup Street in the district contains 115 contributing and 8 non-contributing buildings.

Detailed Description: Greenup Street is another major north/south street in the city with sections settled soon after 1850. The Helentown District encompasses the 1100-1600 blocks of Greenup and it contains a fine collection of late 19th century architecture. Several blocks have residences which rival Scott in size and design.

There are no structures in the 1100 Block on the west side of the street which was originally the site of the St. Joseph's Catholic Church complex. On the east side are eight Italianate and Greek Revival buildings many of which are now occupied for commercial use or vacant. In the 1200 block on the west side are 4 pre-1870 brick Greek Revival structures and a later Italianate design. On the east side of the street are 11 Queen Anne and Italianate style dwellings built after 1877, including the Duveneck residence at 1226 (Photo 39). At 1224 Greenup is a good example of the typical iron fences found throughout the Eastside area (Photo 56). The 1300 block contains a variety of styles including early Greek Revival houses at 1326 and 1328 and a Second Empire style duplex at 1330-32 Greenup. Five houses on the east side of the block (1338-46) are two-story "Foursquare" style residences built ca. 1910. On the west side are 9 one and two-story dwellings built ca. 1915. These residences are gable front designs with Colonial Revival and Bungalow detailing (Photo 29).

In the 1400 block are five Italianate dwellings on the east side of the street which were built ca. 1860-70. All residences on the west side were built after 1877 and include an ornate Second Empire style house at 1415 built between 1877 and 1886. Adjacent to this residence are the Ruthlynn Apartments constructed ca. 1915 with Spanish detailing. The 1500 block contains 37 residences with approximately 15 pre-dating 1877. Most of these are two-story brick dwellings with decorative hood molding and brackets. South of E. 16th Street only one house, the Italianate design at 1514, was built prior to 1877 and the others are primarily Queen Anne designs built ca. 1890. At 1604 Greenup is an excellent Neo-Classical design commercial building (Photo 54).

Garrard Street

Overview: Garrard Street in the district contains 76 contributing and 14 non-contributing buildings.

United States Department of the Interior  
National Park Service

# National Register of Historic Places Inventory—Nomination Form



Helentown Hist. Dist. (Eastside MRA)

Continuation sheet Covington, Kenton Co., KY Item number 7

Page 8

Detailed Description: Garrard Street is an important north/south street in the area and parts of 9 blocks are included in the district. With the exception of properties in the 1500 block most of the street was settled after 1877 and the street was first called Stevens Street. In the 1100 block are 12 residences constructed ca. 1890 in Italianate styles. At the corner of 12th and Garrard are 2 modern commercial businesses. The 1200 block contains 18 properties which were also constructed after 1880 and are designed in simple Italianate styles. The east side of Garrard between Trevor and 13th contains an especially cohesive row of 9 houses.

The 1300 block was settled much later than most of the rest of the street and the majority of residences were built after 1900. Within the block are 22 houses built in the Bungalow and simple Colonial cottage styles of the early 1900s (Photo 52). Also in the block are 3 Dutch Colonial designs with gambrel roofs. In the 1400 block are 20 residences built between 1880 and 1920. Most are simple Italianate or Colonial designs of the turn of the century. On the east side of the block is a row of 9 identical single family dwellings of brick construction.

In the 1500 block are the street's oldest buildings. This street was part of the Patton subdivision which was laid out in 1852 and settled soon after. Included on this block is the Patton house built by Robert Patton ca. 1855 in the late Greek Revival style (NR, 1983). The Patton house is a two-story brick residence with rectangular windows and sheet metal hood molding, sidelights and transom on the main entrance and a cornice with modillion blocks (Photo 33). On the main facade is a later one-story Eastlake style porch with milled posts and railing. Also in this block are 8 dwellings which pre-date 1877 and were built in the late Greek Revival and Italianate styles. Several more early houses on the east side of the street were demolished to make way for the factory which faces E. 15th Street. Garrard Street makes a jog to the southwest in this block to follow the original plan of the Patton subdivision. Beyond the 1500 block is the C&O railroad embankment which marks the southern boundary of the Helentown District.

## Collins Street

Overview: Collins Street in the district contains 2 contributing and 2 non-contributing buildings.

Detailed Description: Collins Street is a block long dead end street which runs north from E. 16th Street between Greenup and Garrard. This street was originally called Thomas on the Patton Subdivision but very few structures were constructed on this street before 1930. Only two structures on the street are contributing to the district and they are simple vernacular designs from ca. 1900.

United States Department of the Interior  
National Park Service

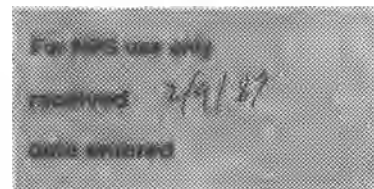
**National Register of Historic Places  
Inventory—Nomination Form**

Helentown Hist. Dist. (Eastside MRA)

Continuation sheet Covington, Kenton Co., KY

Item number 7

Page 9



Wheeler Street

Overview: Wheeler Street in the district contains 38 contributing and 9 non-contributing buildings.

Detailed Description: Wheeler Street is a narrow north/south street which connects E. 11th with streets in Austinburg. The alley behind the east side of Wheeler Street forms much of the eastern boundary of the district. Parts of 5 blocks of the street are included in the district. Wheeler was settled later than the other north/south streets and no structures were built before 1877. In the 1200 block are 16 residences built in simple Italianate and vernacular styles ca. 1890. South of E. 13th Street most structures on Wheeler were built in the early 1900s. These are frame cottages with minimal detailing. In the 1300 block are 6 identical design cottages with jerkin head roof forms (Photo 45). The 1400 block also contains several dwellings which were constructed at the same time with identical designs. Beyond E. 15th Street is the C&O embankment which forms the southern boundary of the district.

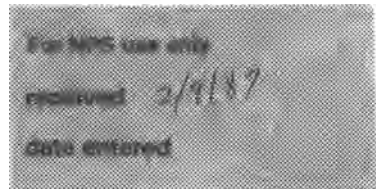
Maryland Street

Overview: Maryland Street in the district contains 2 contributing and 3 non-contributing buildings.

Detailed Description: Maryland Street runs along the eastern edge of the district with most of the street excluded from the boundary due to the age and alterations to the buildings. Parts of the 1300 and 1400 block are included in the district. These two blocks contain 5 buildings, 2 of which are contributing and 3 are non-contributing.

United States Department of the Interior  
National Park Service

National Register of Historic Places  
Inventory—Nomination Form



Helentown Hist. Dist. (Eastside MRA)

Continuation sheet Covington, Kenton Co., KY

Item number 8

Page 1

Helentown Historic District

Significance

The Helentown Historic District is an architecturally significant area of Covington, Kentucky. Containing 840 properties, the district retains an impressive collection of architectural styles built between ca. 1840 and 1935. The majority of buildings in the district were constructed prior to 1900 in the Greek Revival, Italianate, Queen Anne and Second Empire styles. Intrusions in the district are minimal and most non-contributing properties are altered pre-1930 structures. The district has traditionally been a middle and working class neighborhood close to downtown and this demographic configuration remains today.

The district is primarily made up of single-family and multi-family dwellings. Among these are large duplexes, apartment buildings and rowhouses from the late 19th century. Commercial buildings are much less common and are confined to street corners where they serve as local groceries or taverns. Many of these commercial buildings also date to the late 19th century and often retain elements of their original cast iron storefronts. Included in the district are also the imposing St. Mary's Cathedral (NR, 1974), Carnegie Library (NR, 1983) and several other churches and schools.

The area was originally settled by German, Irish and other immigrants after 1840. Most of the district was subdivided and settled by 1880 with a largely working class population who labored in Covington factories and shops. Although much of the original ethnic flavor of the community has dispersed through past generations the district still retains many German names and traditions. Since the early 1900s, a large black population has settled in the northeast section of the district.

The district retains several notable churches and schools which have been significant in the growth and development of Covington. St. Mary's Cathedral is one of the most important churches in the region and continues to serve the local Catholic congregation. Several other churches have also served the local Methodist and Christian congregations for many years. The Bishop Howard School, Catholic School and Catholic Latin School have all been important schools serving the German Catholics of the community.

The district contains one of the largest and best remaining concentrations of brick and frame Victorian architecture in the city. In addition to the residences themselves, the streetscapes with original iron fencing, brick sidewalks and alleys are also important aspects of the district. The many variations of Greek Revival, Italianate and Queen Anne designs makes the district especially architecturally significant.

United States Department of the Interior  
National Park Service

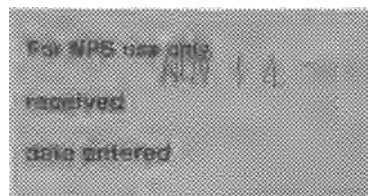
National Register of Historic Places  
Inventory—Nomination Form

Helentown Historic District (Eastside MRA)

Continuation sheet Covington, Kenton Co., KY

Item number 10

Page 1



Verbal Boundary Description and Justification  
Helentown Historic District

The Helentown Historic District boundary is drawn as follows:

Beginning at the northwest corner of Wheeler and E. 15th St., thence westwardly 525' across Garrard to the northwest corner of Garrard and E. 15th St., thence 250' southwardly to a point, thence 150' eastwardly to a point, thence 75' southwardly to a point, thence 50' westwardly to a point, thence 215' southwardly across Patton to a point, thence westwardly 125' across Garrard to a point, thence 175' southwardly to the northwest corner of Garrard and E. 16th St., thence 200' westwardly along the northern right-of-way of E. 16th St. to the northwest corner of Collins and E. 16th St., thence 225' southwardly to a point, thence 75' westwardly to a point, thence 50' southwardly to a point, thence 250' westwardly to Scott Blvd., thence 300' northward to the northeast corner of Scott and E. 16th St., thence 275' westwardly to the northeast corner of Madison and E. 16th St., thence northwardly along Madison 360' to the northern property line of the Madison Ave. Christian Church, thence eastwardly 125' to an alley, thence northwardly 100' to a point, thence westwardly 75' west to a point, thence 450' northwardly across Martin St. and across Byrd St. to a point, thence 15' westwardly to a point, thence 25' northwardly to a point, thence 60' eastwardly to Wood St., thence 550' northwardly to a point, thence 75' westwardly to a point, thence 100' northwardly to a point, thence 15' westwardly to a point, thence 150' northwardly across E. 12th St. to a point, thence 275' westwardly to a point, thence 325' northwardly to E. 11th St., thence 500' eastwardly to Scott Blvd., thence 75' southwardly to a point, thence 225' eastwardly to a point, thence 100' southwardly to a point, thence 75' westwardly to a point, thence 250' southwardly across E. 12th St. to a point, thence 300' eastwardly across Greenup, thence 250' northwardly along the eastern right-of-way of Greenup St. to a point, thence westwardly 125' to a point, thence 75' northwardly to a point, thence eastwardly 125' to a point, thence north 50' to the southern right-of-way of E. 11th St., thence eastwardly 725' to the western right-of-way of Wheeler, thence 350' southwardly to E. 12th St., thence 200' eastwardly along the southern right-of-way of E. 12th to an alley, thence southwardly 825' along the alley right of way to a point, thence eastwardly 200' to an alley, thence 200' southwardly to a point, thence 125' westwardly across Maryland to a point, thence 225' westwardly across Wheeler to a point, thence 100' south to the point of beginning.

The Helentown Historic District boundary is drawn to include the majority of contributing structures associated with the historic neighborhood of Helentown. On the north the district is bounded by modern structures, the Downtown Commercial Historic District and Emery-Price Historic District. On the west the district runs behind modern or altered commercial buildings on Madison Avenue with the exception of the Madison Ave. Christian Church which is historically

**United States Department of the Interior  
National Park Service**

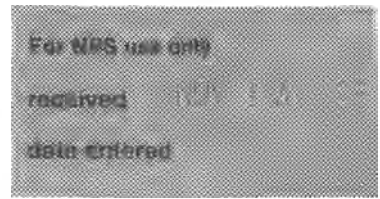
**National Register of Historic Places  
Inventory—Nomination Form**

Helentown Historic District (Eastside MRA)

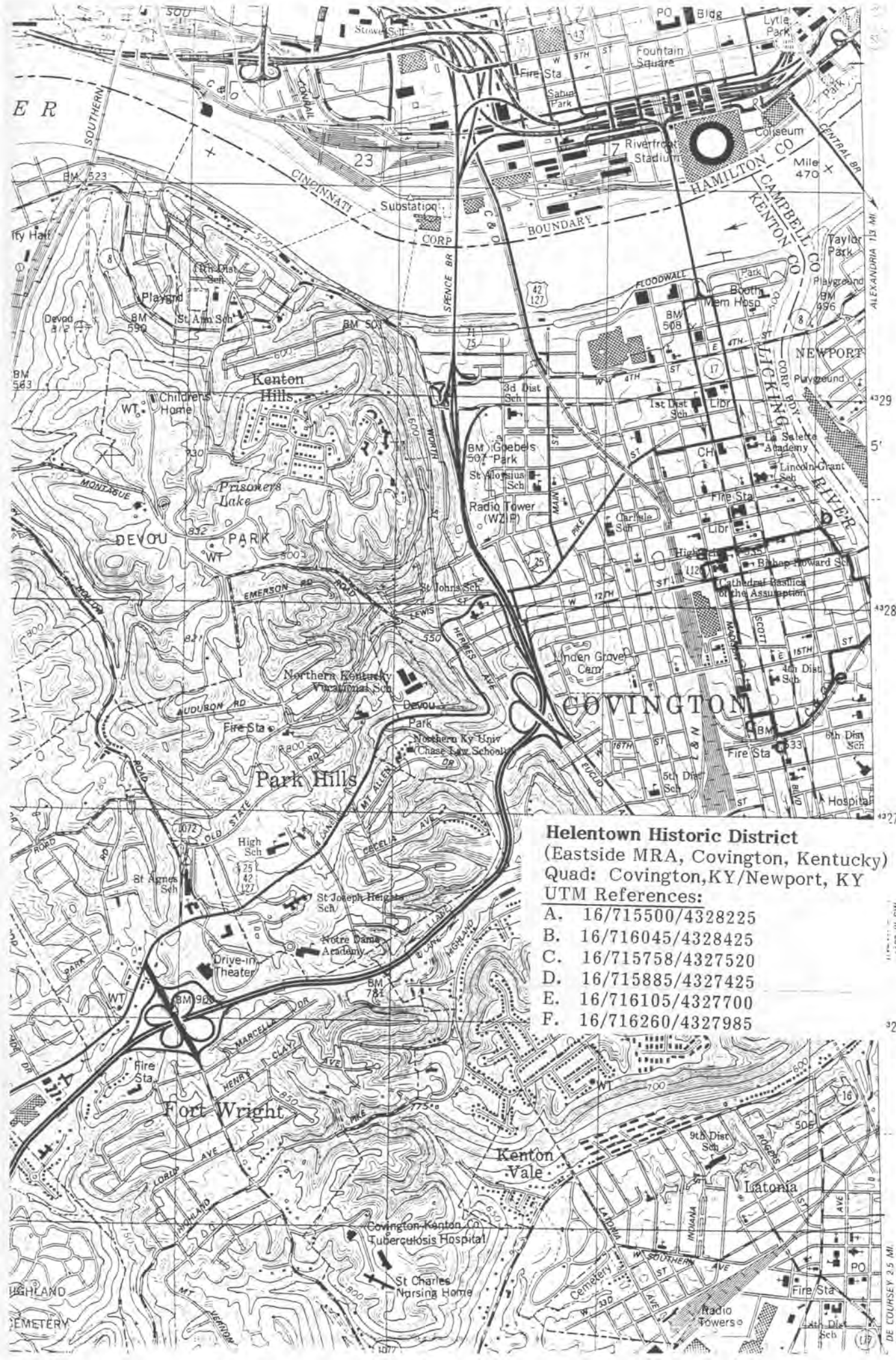
Continuation sheet Covington, Kenton Co., KY

Item number 10

Page 2



associated with the community. On the south the boundary is defined by the CSX Railroad embankment and right-of-way and the boundary is also drawn to exclude a modern factory. On the east the boundary is defined by modern or altered structures adjacent to the Licking River Floodwall.



**Helentown Historic District**  
 (Eastside MRA, Covington, Kentucky)  
 Quad: Covington, KY/Newport, KY  
 UTM References:

- A. 16/715500/4328225
- B. 16/716045/4328425
- C. 16/715758/4327520
- D. 16/715885/4327425
- E. 16/716105/4327700
- F. 16/716260/4327985

4328 III SW

4326

DE COURSEY 2.5 MI.  
 KENTON 14 MI

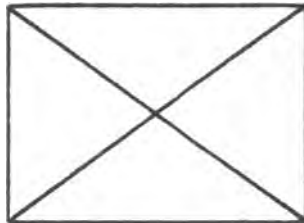


HELENTOWN HISTORIC DISTRICT

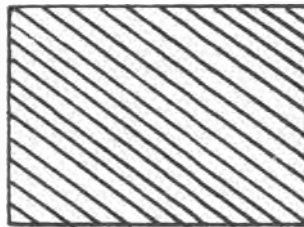


EASTSIDE MULTIPLE RESOURCE AREA  
COVINGTON, KENTUCKY

MAP KEY



VACANT - NON-CONTRIBUTING



PRE-1935 STRUCTURE  
ALTERED - NON-CONTRIBUTING

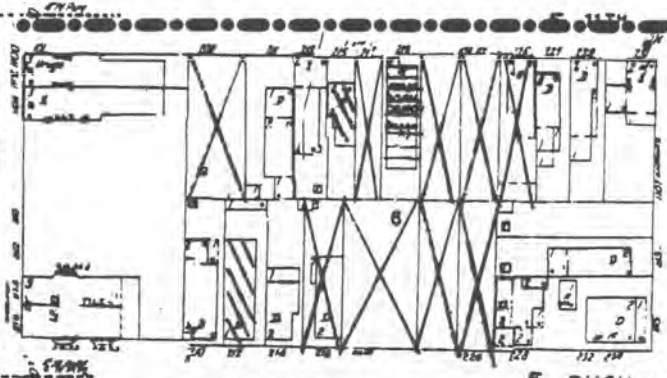


POST-1935 STRUCTURE  
NON-CONTRIBUTING

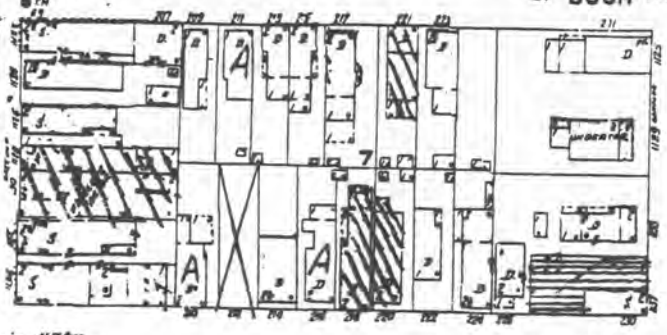
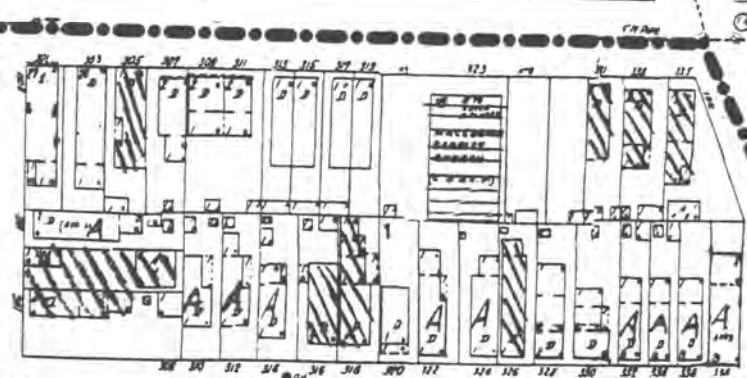
ALL OTHER PROPERTIES ARE CONTRIBUTING  
THOSE MARKED WITH AN "A" ARE ALTERED BUT CONTRIBUTING

SCALE- 1" = 100'

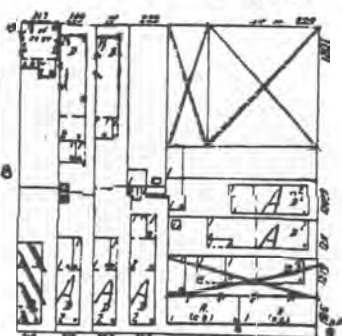
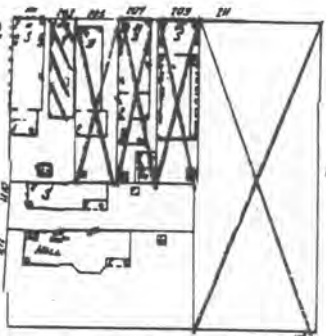
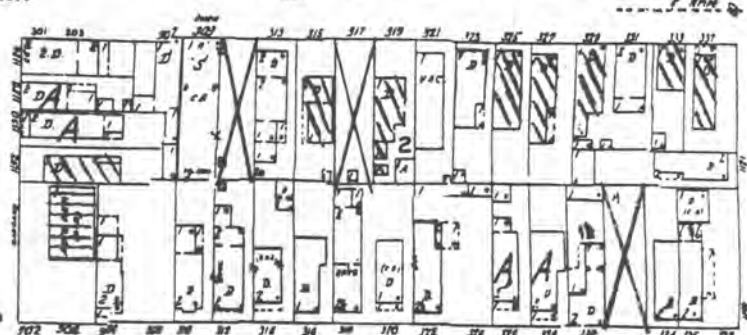
NORTH ARROW AS MARKED



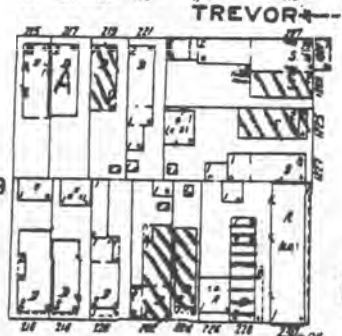
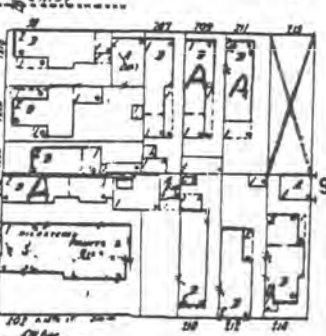
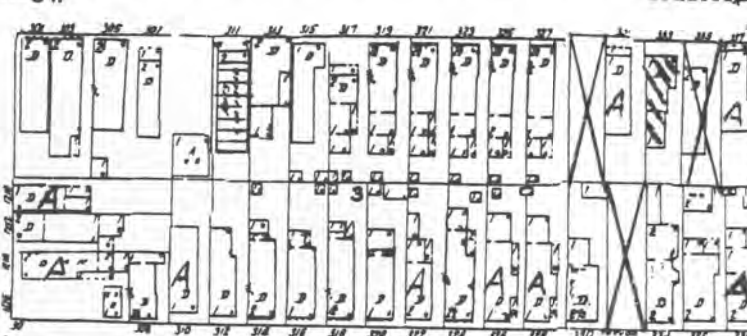
E. BUSH



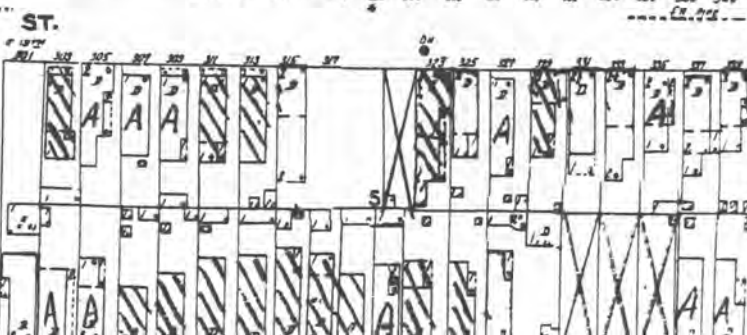
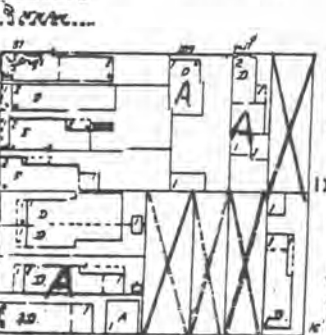
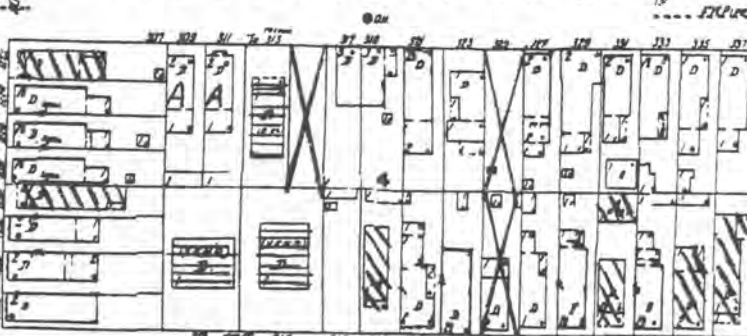
E. 12TH

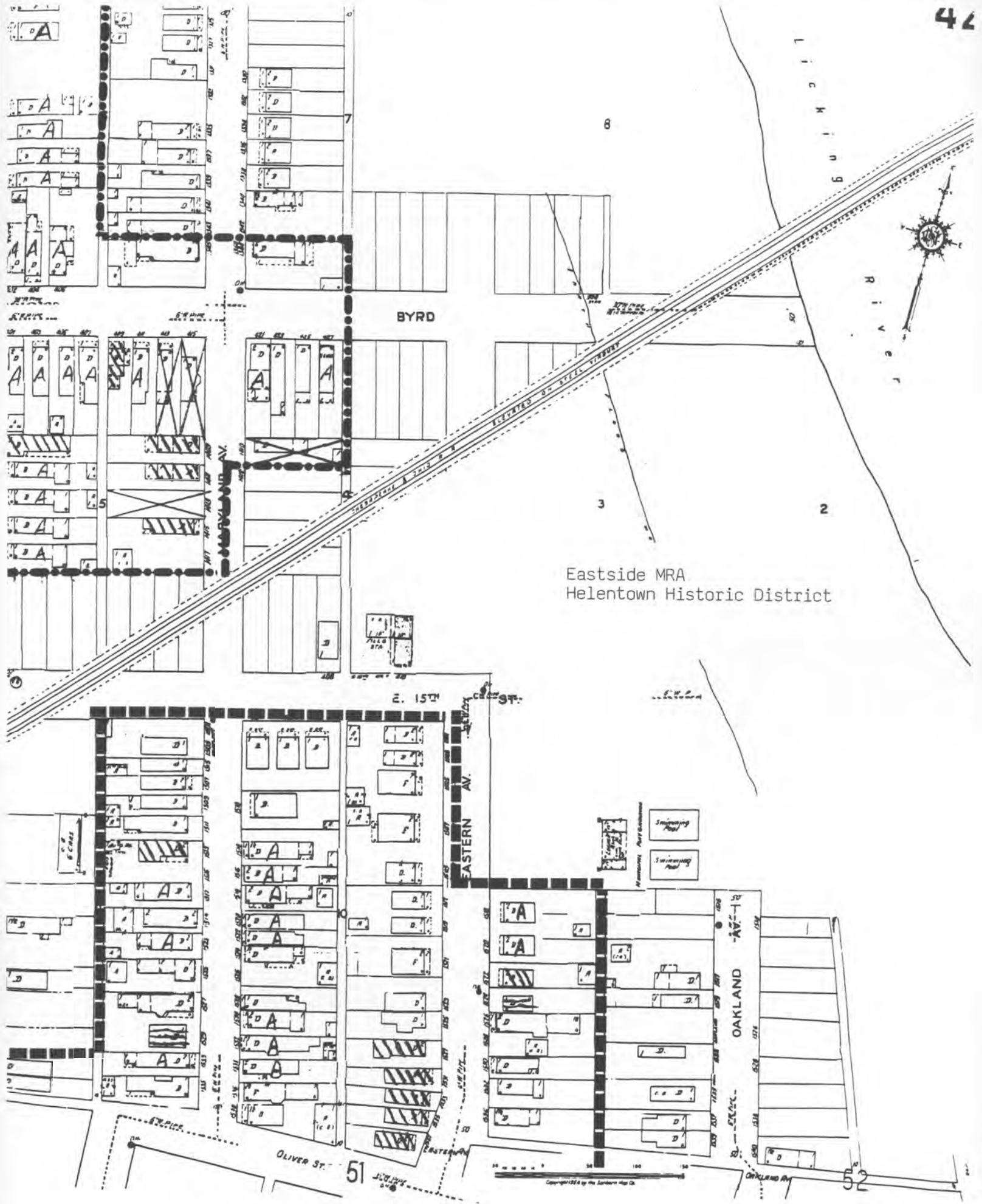


TREVOR



E. 13TH





Eastside MRA  
Helentown Historic District

BYRD

E. 15TH

EASTERN AV.

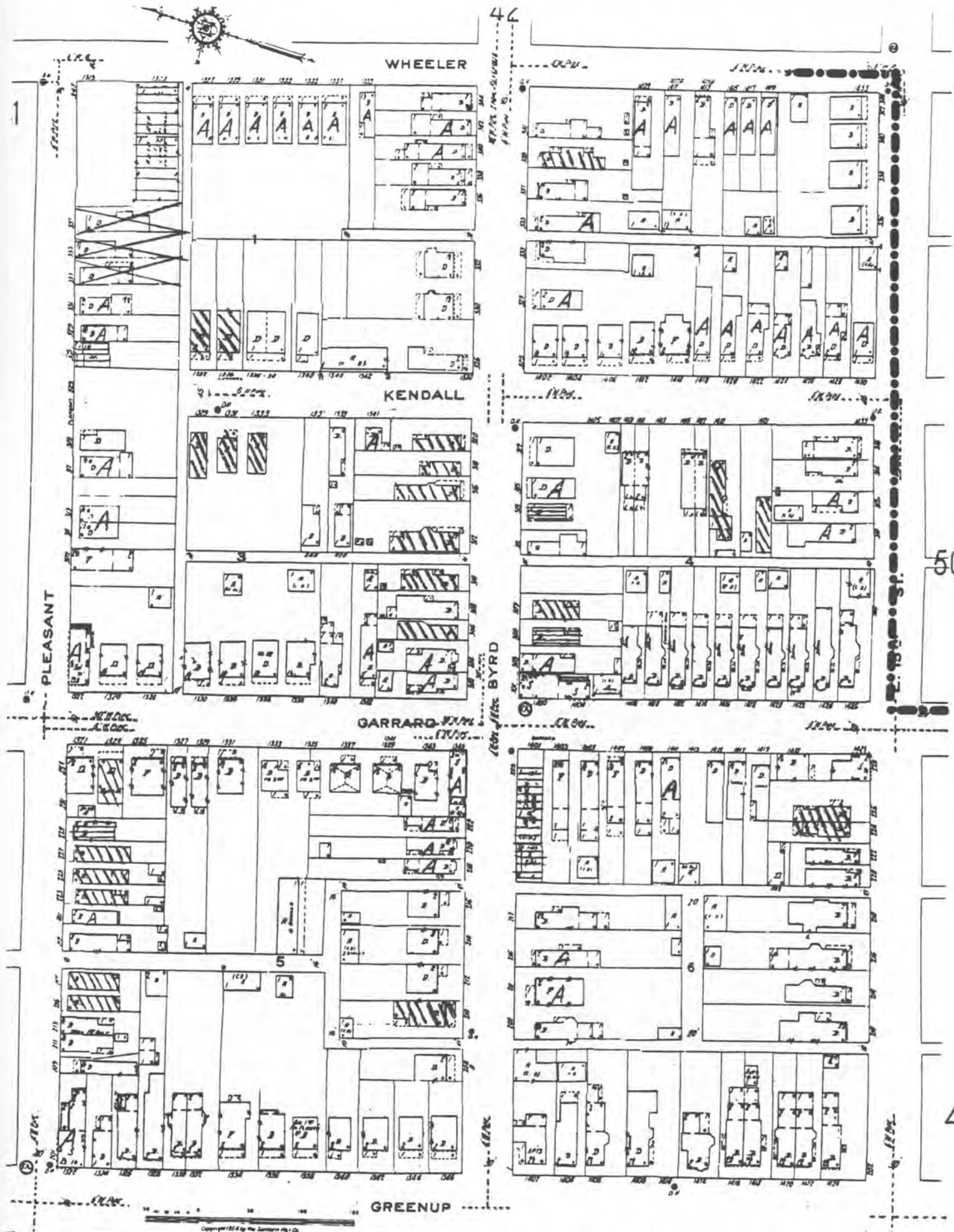
OAKLAND AV.

OLIVER ST.

51

52

Copyright 1984 by the Eastern Map Co.



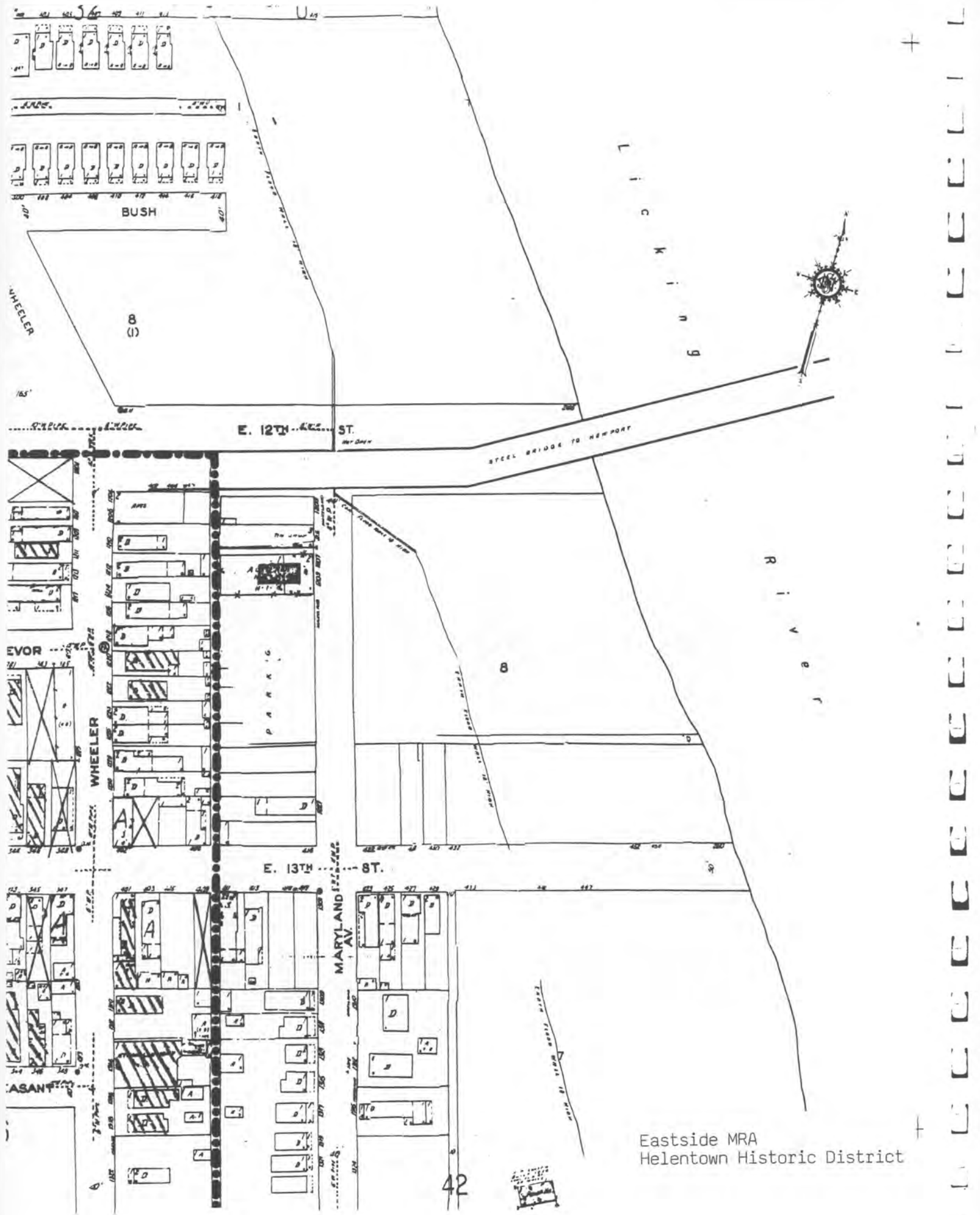
50

49

45

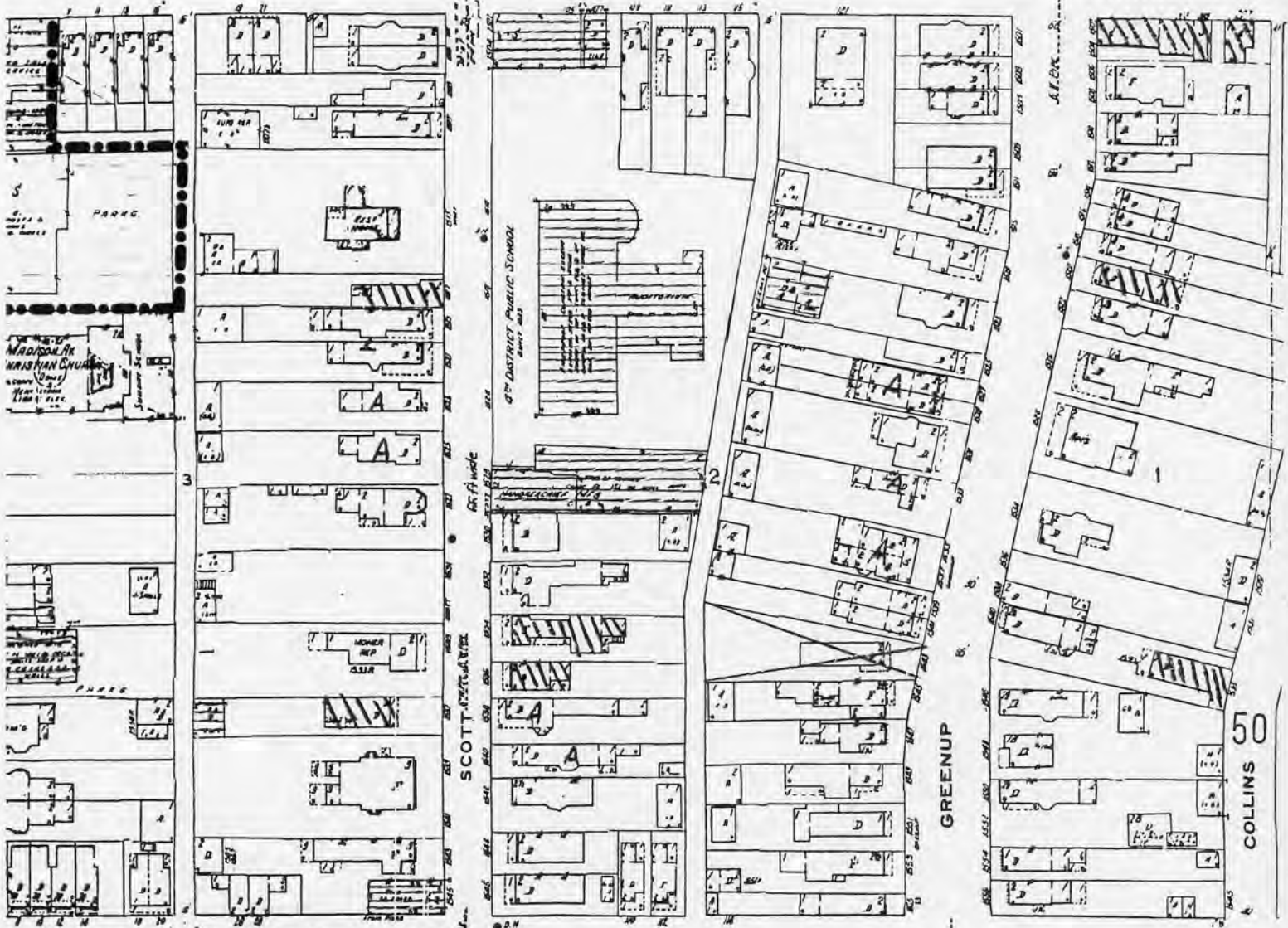
Eastside MRA  
Helentown Historic District

NOV 1 2012

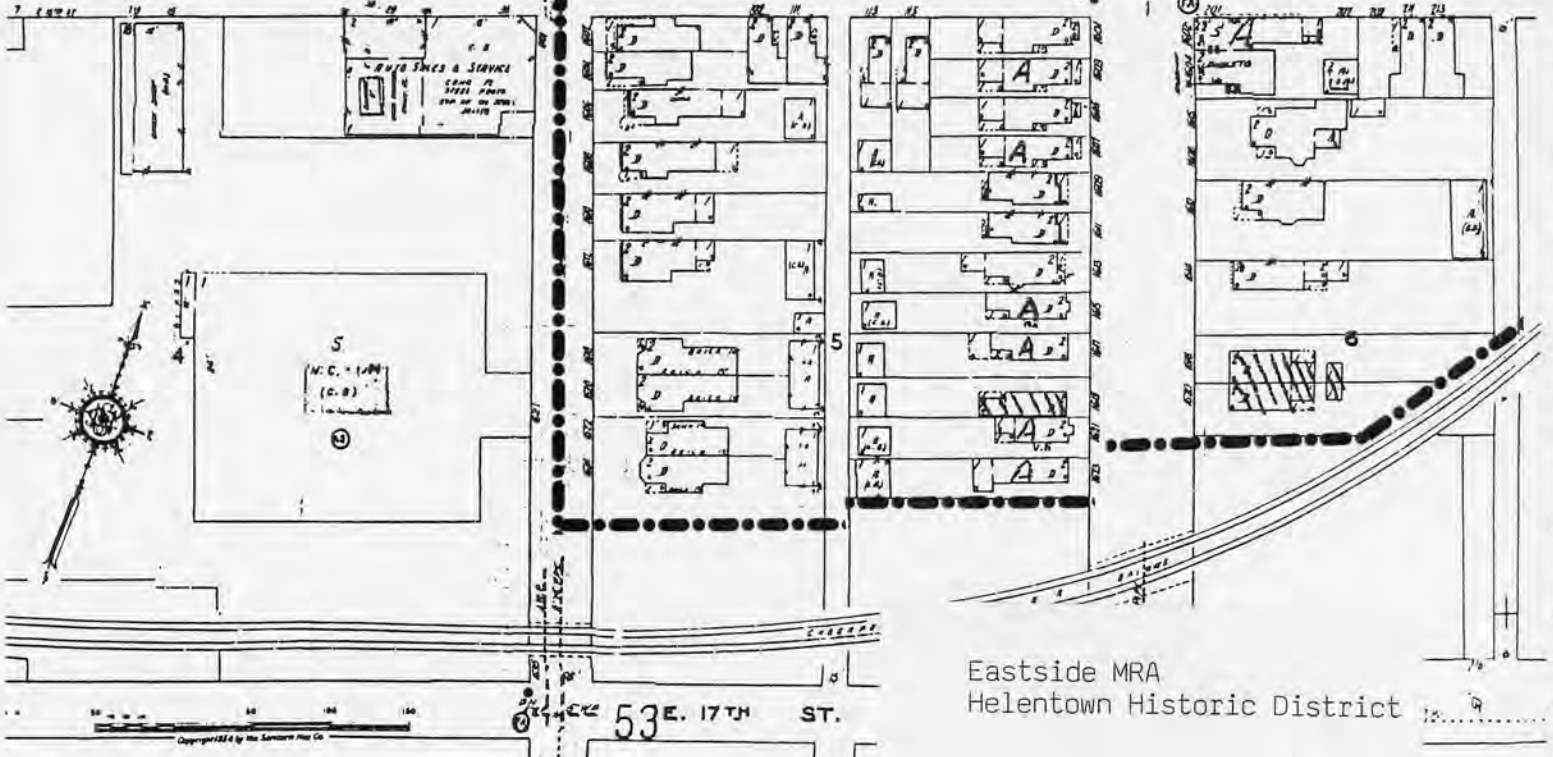


Eastside MRA  
Helentown Historic District

E. 15TH ST.



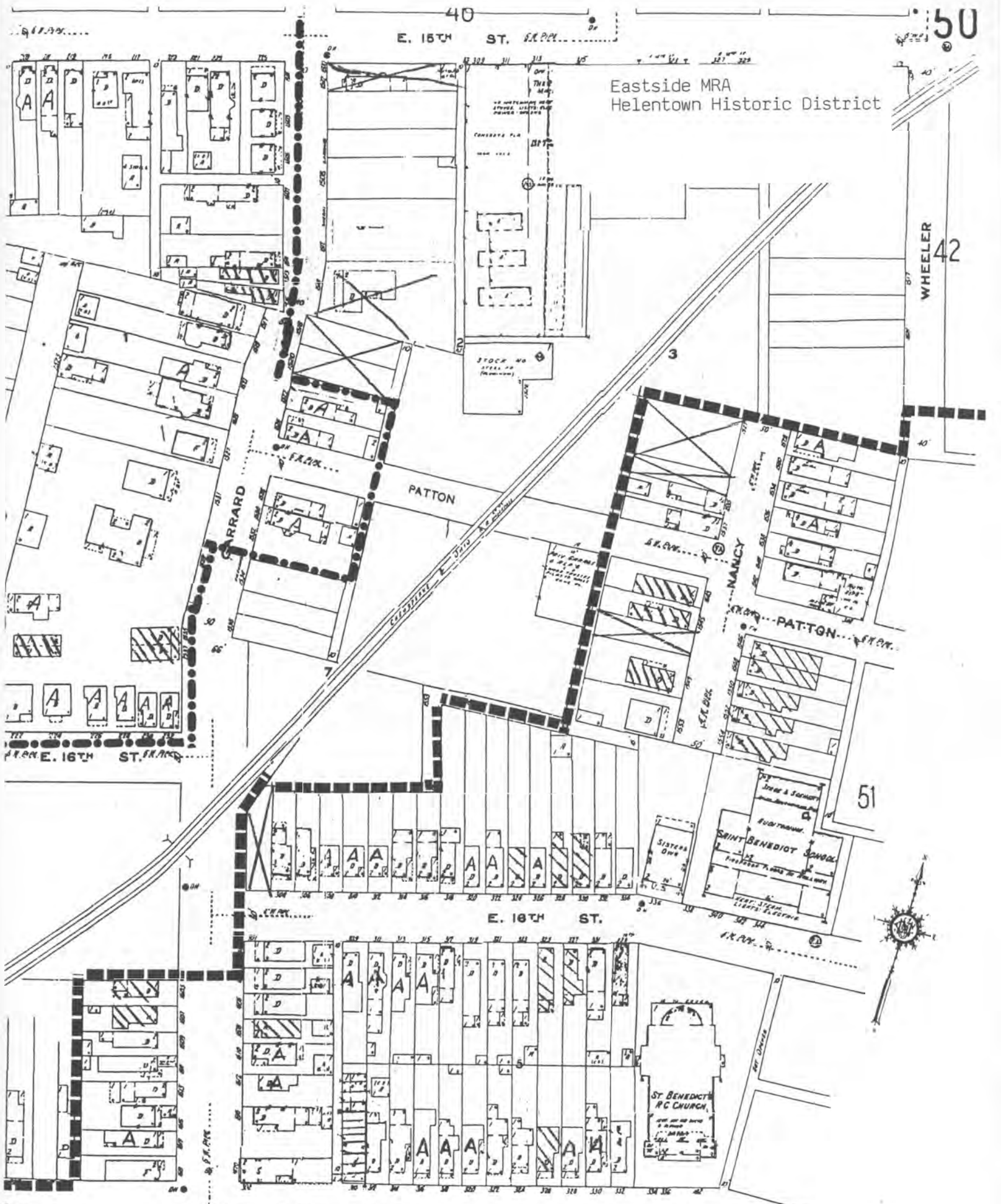
E. 16TH ST.



53 E. 17TH ST.

Eastside MRA Helentown Historic District

Eastside MRA  
Helentown Historic District



51



37

CHESAPEAKE AV.

WASHINGTON

39

MADISON AV.

45

CHESAPEAKE & OHIO R.R.

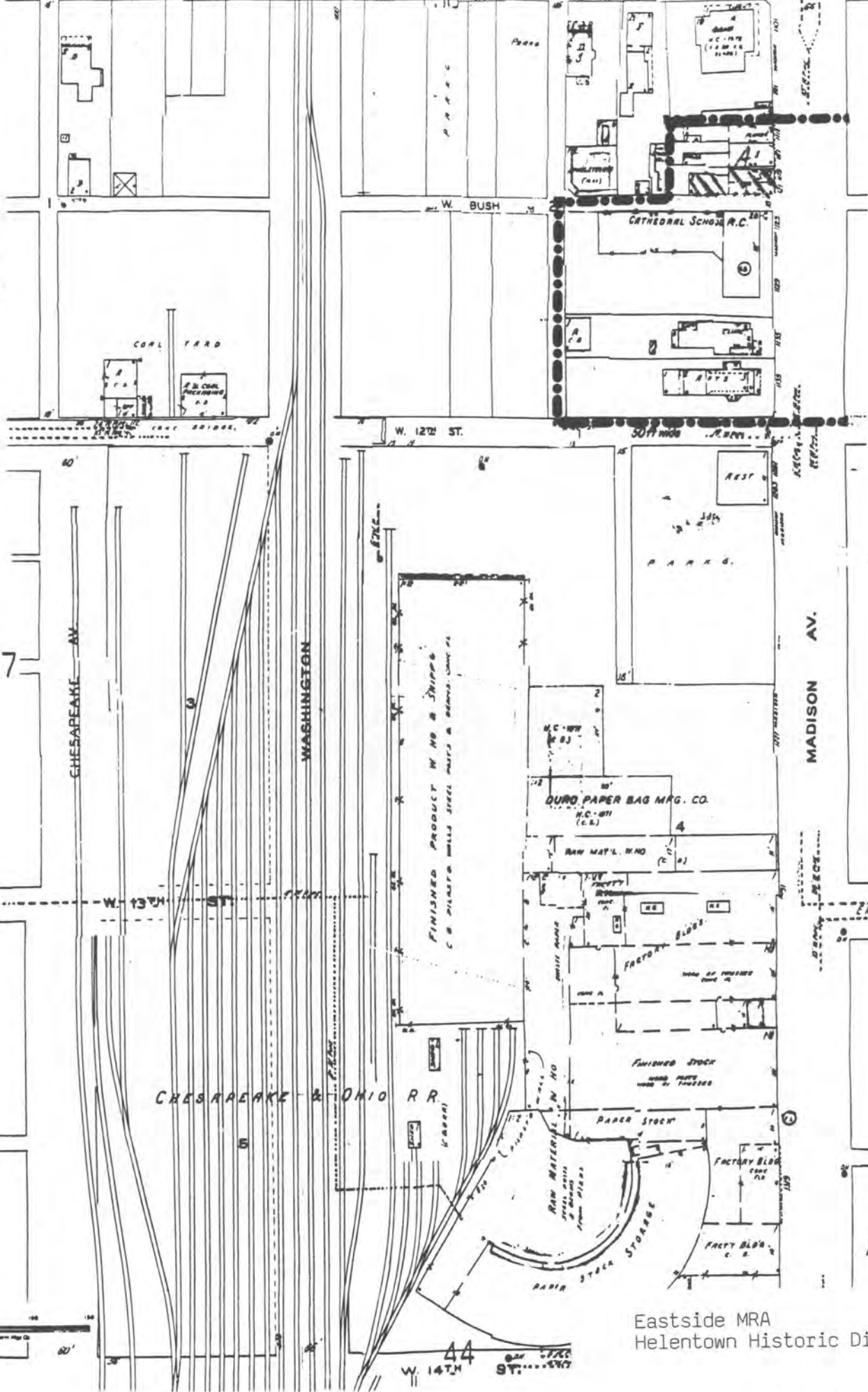
W 14TH ST.

44

W 13TH ST.

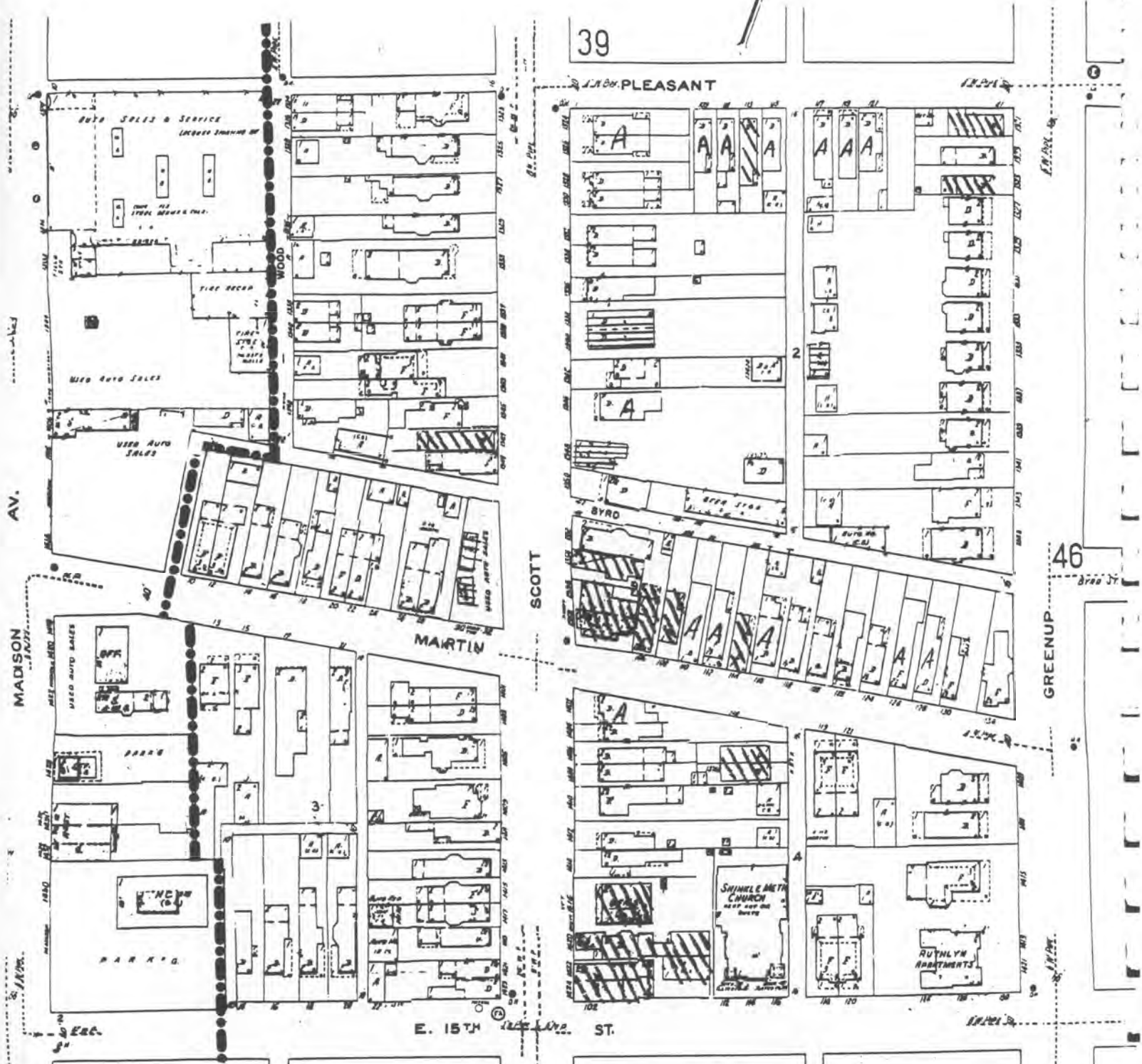
Eastside MRA  
Helentown Historic District

NOV 14 1935



Copyright 1934 by the American Map Co.





39

46

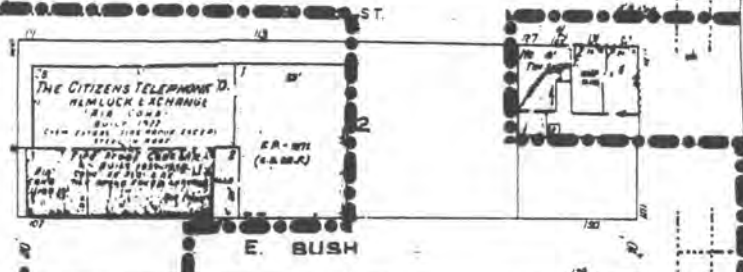
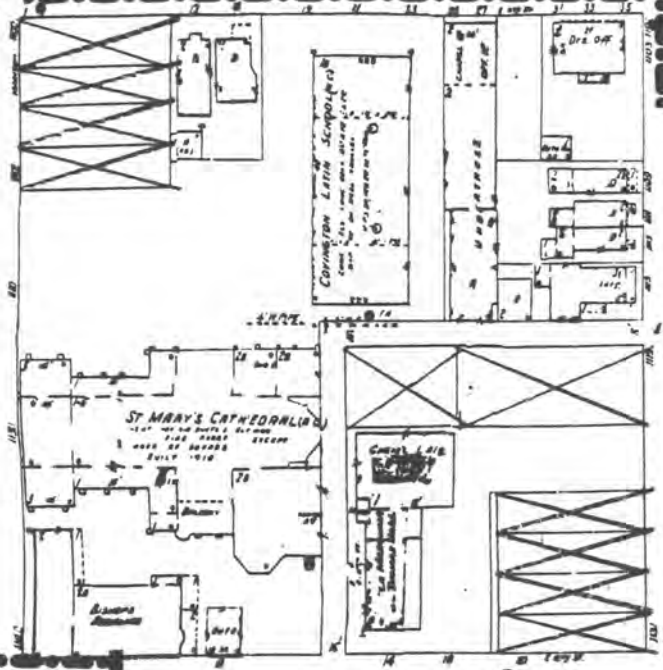
Eastside MRA  
Helentown Historic District

Eastside MRA  
Helentown Historic District

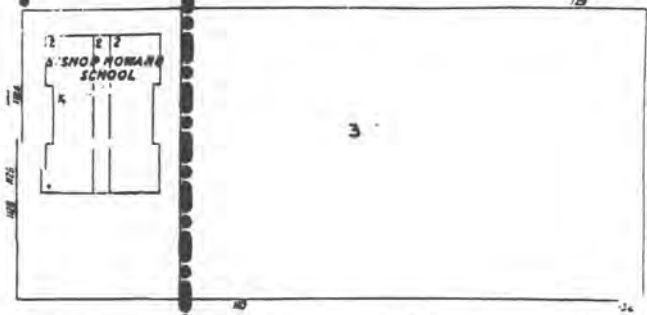
3

E. 11TH

S

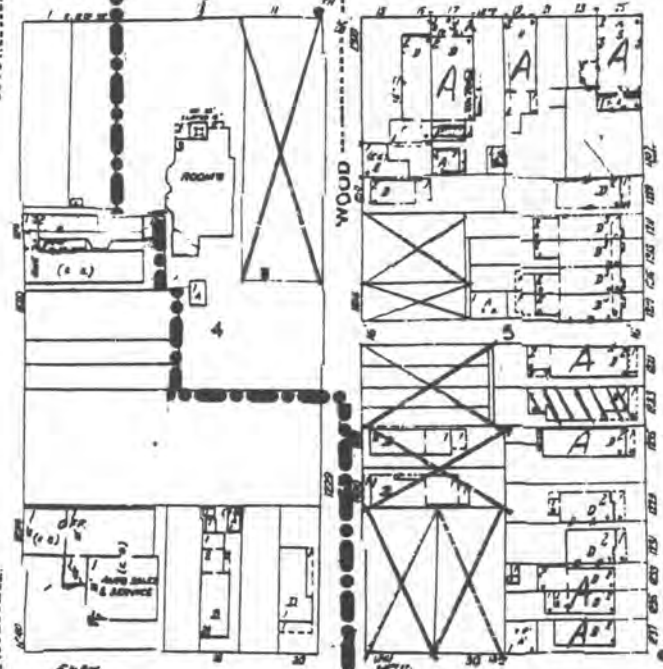


E. BUSH

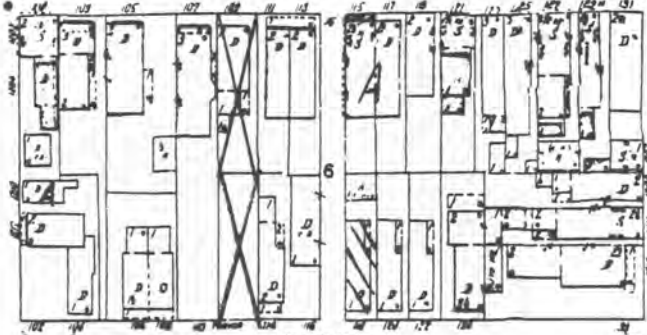


E. 12TH

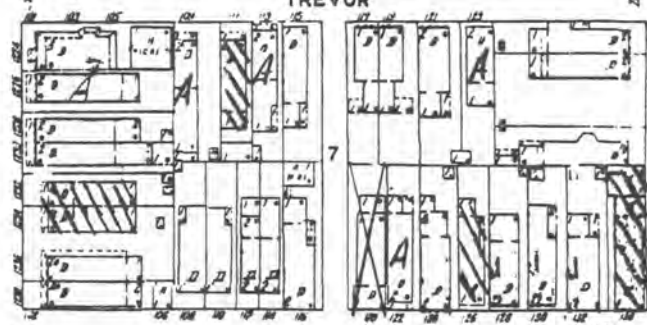
ST.



SCOTT

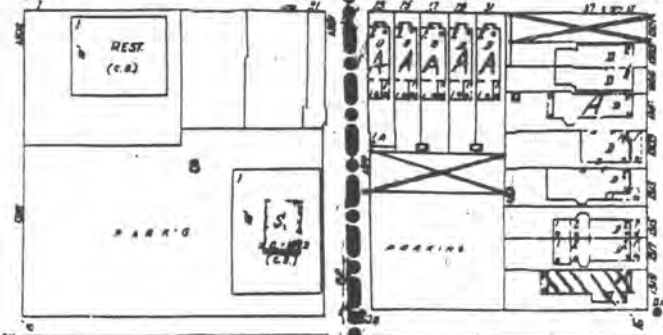


TREVOR

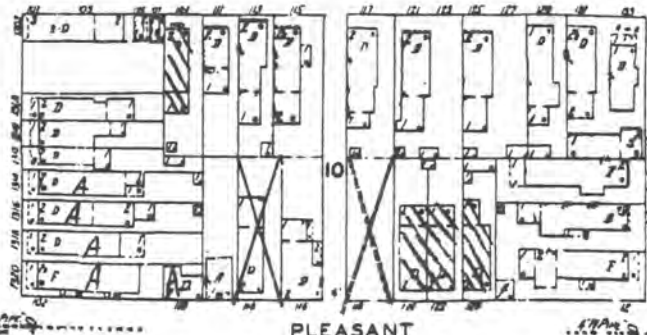


E. 13TH

ST.



45



PLEASANT

GREENUP

40

United States Department of the Interior  
National Park Service

National Register of Historic Places  
Inventory—Nomination Form



Continuation sheet

Item number

Page

Multiple Resource Area  
Thematic Group

dnr-11

Name Eastside Multiple Resource Area

State Kenton County, KENTUCKY

Nomination/Type of Review

Date/Signature

1. Austinburg Historic District

~~Substantive Review~~ Keeper

A. Schlagel 2/18/87

Attest

2. Emery-Price Historic District

~~Substantive Review~~ Keeper

A. Schlagel 2/18/87

Attest

3. Helentown Historic District

~~Substantive Review~~ Keeper

A. Schlagel 2/18/87

Attest

4. West Fifteenth Street Historic District

~~Substantive Review~~ Keeper

A. Schlagel 2/18/87

Attest

5.

Keeper

Attest

6.

Keeper

Attest

7.

Keeper

Attest

8.

Keeper

Attest

9.

Keeper

Attest

10.

Keeper

Attest

NATIONAL REGISTER OF HISTORIC PLACES  
EVALUATION/RETURN SHEET

Substantive Review

Helentown Historic District (Eastside MRA)  
Kenton County  
KENTUCKY

Working No. NOV 14 1986  
Fed. Reg. Date: \_\_\_\_\_  
Date Due: 12/11/86 - 12/29/86  
Action:  ACCEPT  
 RETURN 12-29-86  
 REJECT  
Federal Agency: \_\_\_\_\_

- resubmission
- nomination by person or local government
- owner objection
- appeal

Substantive Review:  sample  request  appeal  NR decision

Reviewer's comments:

*Please review questions concerning Court and rd/religious significance - also, please correct heading on*

Recom./Criteria Return  
Reviewer ASchlager  
Discipline Arch Hist  
Date 12/29/86  
see continuation sheet

Nomination returned for:  technical corrections cited below  
 substantive reasons discussed below

*pages 10 of VBD for Helentown  
Thank you*

1. Name

2. Location

3. Classification

Category	Ownership Public Acquisition	Status Accessible	Present Use
----------	---------------------------------	----------------------	-------------

4. Owner of Property

5. Location of Legal Description

6. Representation in Existing Surveys

Has this property been determined eligible?  yes  no

7. Description

Condition	Check one	Check one
<input type="checkbox"/> excellent	<input type="checkbox"/> deteriorated	<input type="checkbox"/> original site
<input type="checkbox"/> good	<input type="checkbox"/> ruins	<input type="checkbox"/> moved date _____
<input type="checkbox"/> fair	<input type="checkbox"/> unexposed	
	<input type="checkbox"/> unaltered	
	<input type="checkbox"/> altered	

Describe the present and original (if known) physical appearance

- summary paragraph
- completeness
- clarity
- alterations/integrity
- dates
- boundary selection

**8. Significance**

Period \_\_\_\_\_ Areas of Significance—Check and justify below \_\_\_\_\_

Specific dates \_\_\_\_\_ Builder/Architect \_\_\_\_\_

Statement of Significance (*in one paragraph*) \_\_\_\_\_

- summary paragraph
- completeness
- clarity
- applicable criteria
- justification of areas checked
- relating significance to the resource
- context
- relationship of integrity to significance
- justification of exception
- other

**9. Major Bibliographical References**

**10. Geographical Data**

Acreage of nominated property \_\_\_\_\_

Quadrangle name \_\_\_\_\_

UTM References \_\_\_\_\_

Verbal boundary description and justification \_\_\_\_\_

**11. Form Prepared By**

**12. State Historic Preservation Officer Certification**

The evaluated significance of this property within the state is:

\_\_\_\_ national      \_\_\_\_ state      \_\_\_\_ local

State Historic Preservation Officer signature \_\_\_\_\_

title \_\_\_\_\_ date \_\_\_\_\_

**13. Other**

- Maps
- Photographs
- Other

Questions concerning this nomination may be directed to \_\_\_\_\_

Signed W. Schlager Date 12/29/86 Phone: \_\_\_\_\_

NATIONAL REGISTER OF HISTORIC PLACES  
EVALUATION/RETURN SHEET

Helentown Historic District (Eastside MRA)  
Kenton County  
KENTUCKY

Substantive Review

Working No. 11/4/86  
Fed. Reg. Date: 2/2/88  
Date Due: 3/26/87  
Action:  ACCEPT 2-18-87  
 RETURN  
 REJECT  
Federal Agency: \_\_\_\_\_

- resubmission
- nomination by person or local government
- owner objection
- appeal

Substantive Review:  sample  request  appeal  NR decision

Reviewer's comments:

*Property significant enclave of  
German settlers in Covington -  
Also representative examples of  
type and period of  
construction  
Court problems addressed*

Recom./Criteria Accept AC  
Reviewer Aschlagel  
Discipline Arch Hist  
Date 2/18/87  
\_\_\_\_\_ see continuation sheet

Nomination returned for: \_\_\_\_\_ technical corrections cited below  
\_\_\_\_\_ substantive reasons discussed below

1. Name

2. Location

3. Classification

Category	Ownership Public Acquisition	Status Accessible	Present Use

4. Owner of Property

5. Location of Legal Description

6. Representation in Existing Surveys

Has this property been determined eligible?  yes  no

7. Description

Condition	Check one	Check one
<input type="checkbox"/> excellent	<input type="checkbox"/> deteriorated	<input type="checkbox"/> original site
<input type="checkbox"/> good	<input type="checkbox"/> ruins	<input type="checkbox"/> moved date _____
<input type="checkbox"/> fair	<input type="checkbox"/> unexposed	
	<input type="checkbox"/> unaltered	
	<input type="checkbox"/> altered	

Describe the present and original (if known) physical appearance

- summary paragraph
- completeness
- clarity
- alterations/integrity
- dates
- boundary selection

---

**8. Significance**

Period \_\_\_\_\_ Areas of Significance—Check and justify below

Specific dates \_\_\_\_\_ Builder/Architect \_\_\_\_\_

Statement of Significance (*in one paragraph*)

- summary paragraph
- completeness
- clarity
- applicable criteria
- justification of areas checked
- relating significance to the resource
- context
- relationship of integrity to significance
- justification of exception
- other

---

**9. Major Bibliographical References**

---

**10. Geographical Data**

Acreage of nominated property \_\_\_\_\_

Quadrangle name \_\_\_\_\_

UTM References \_\_\_\_\_

Verbal boundary description and justification \_\_\_\_\_

---

**11. Form Prepared By**

---

**12. State Historic Preservation Officer Certification**

The evaluated significance of this property within the state is:

\_\_\_\_\_ national \_\_\_\_\_ state \_\_\_\_\_ local

State Historic Preservation Officer signature \_\_\_\_\_

title \_\_\_\_\_ date \_\_\_\_\_

---

**13. Other**

- Maps
- Photographs
- Other

Questions concerning this nomination may be directed to \_\_\_\_\_

Signed \_\_\_\_\_ Date \_\_\_\_\_ Phone: \_\_\_\_\_































MADISON AVE CHRISTIAN CHURCH

+

MADISON AVENUE  
CHRISTIAN CHURCH

SUNDAY SCHOOLS OF C. B. B. 1  
PASTOR PETER MOON

Worship 10:30  
SUNDAY 9:30

GIVE WORDS TO THE MUSIC  
OF THE WORLD

PETER MOON













P  
RESERVED

FOR THE CITY OF  
MEMPHIS  
THE  
CITY OF MEMPHIS  
LAND DEPARTMENT







WOMEN'S  
M.E. CHURCH















NO  
PARKING  
HERE TO  
CORNER

NO  
PARKING  
LOADING  
ZONE

OVERWEIN UPHOLSTERING &  
1804 Broad Street 201-678

OVERWEIN UPHOLSTERING &  
201-678 Broad Street 1804

D & R.  
OF  
PARTS  
3565





Please refer to the map in the  
Multiple Property Cover Sheet  
for this property

Multiple Property Cover Sheet Reference Number: 64000217