



WARSAW



On the cover is a solid cherry secretary #1001G at near finish stage in our eighty year old factory. The secretary top is available with glass or panel sides. All of our secretaries and LoBoy desks have secret compartments suitable for holding small items and papers. Secretaries have locks on the drop lid and hutch section only.

In the foreground of the candid photograph on this page is our LoBoy desk #989 in tulip. The nearly complete octagonal cono is #987 in tulip.

A Tradition Of Excellence Since 1902

Orin Arthur Bogardus I was a skilled cabinet maker. But he was also a musician who sawed his fiddle on an Ohio River steamboat — until the autumn of 1902, when a shipboard mishap cost him two fingers and his musical career. When the steamer lowered its gangplank at Warsaw, Kentucky, O.A. went ashore to ply his other trade.

Before the year was out, O.A. had founded the Warsaw Furniture Company and established it as a builder of quality furniture at a fair price. Today, a rich tradition of fine furniture craftsmanship curls back to these intriguing origins.

Affordable Quality

We at the Warsaw Furniture Company work hard to keep this heritage alive. We still build furniture the way people want it. To last. And to be admired. At an affordable price.

All of our furniture is hand crafted from specially selected hardwoods — kiln-dried cherry, tulip poplar and oak — and locked together with precision-fit mortise-and-tenon or tongue-and-groove construction. Fine veneers provide extra strength where it's needed. When completely assembled, each piece is hand sanded. Then our gifted artisans add the elegant brushwork and silky finish that are the Warsaw Furniture Company's trademarks.

The result? Honest, handsome furniture that will be passed down for generations ... truly the heirlooms of tomorrow.

We Work For You

We constantly strive to bring you a line of furniture that you'll be proud to put on your display floor — at prices that make it easy to do so. If you have a problem with our work, we'll correct it. Warsaw Furniture is Kentucky's oldest operating furniture manufacturer — a standing we've held by taking no chances with your satisfaction.



WARSAW FURNITURE COMPANY

Warsaw, Kentucky 41095
606-567-7261



#1002 Secretary

Solid cherry with bonnet top.

#1002½ LoBoy Desk

A solid cherry LoBoy Desk the same style as the secretary without the hutch top.



#1001 Secretary

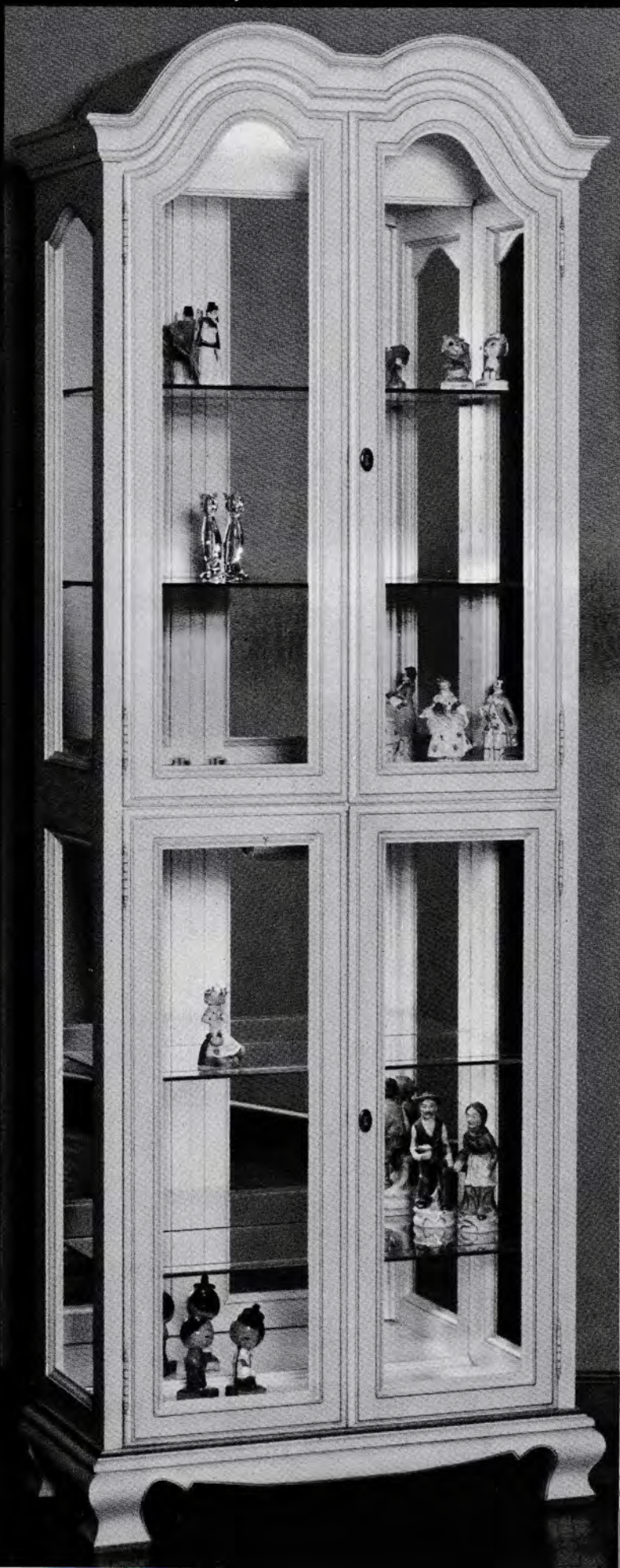
Solid cherry with double bonnet top.

#1001½ LoBoy Desk

A solid cherry LoBoy desk the same style as the secretary without the hutch top.

These two secretaries can also be ordered with glass sides, as on the cover, simply by a suffix G.

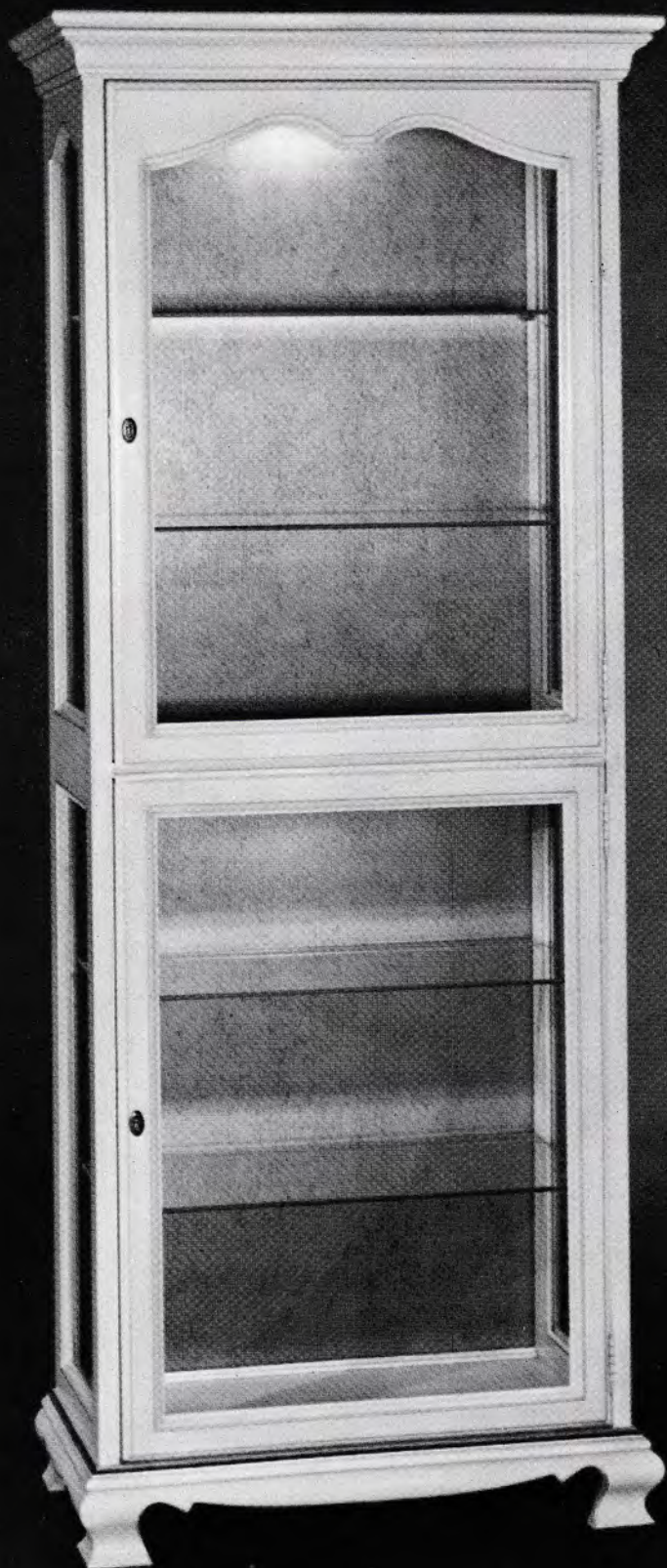
#999 Curio, Solid cherry, shown in white



#998 Curio, Solid cherry

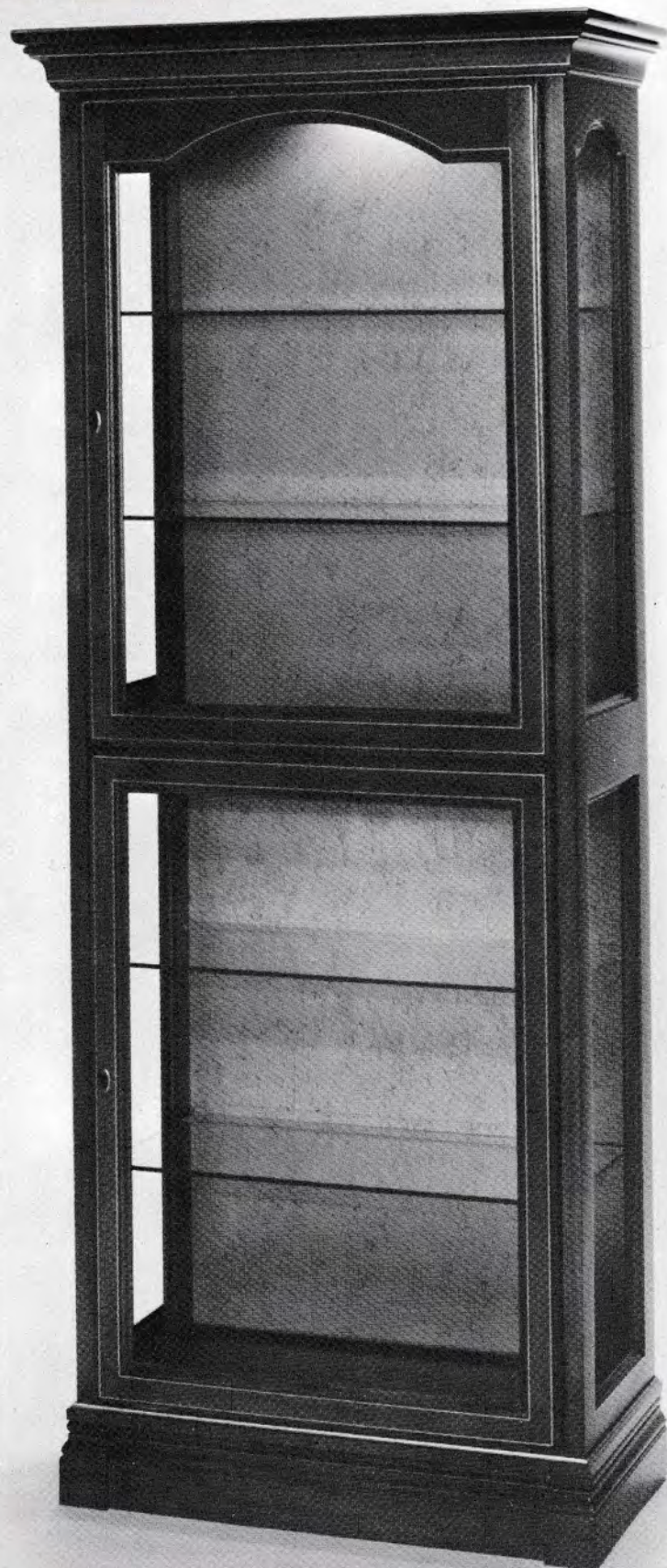
#996 Curio

Available with mirror back or gold
veil back



#995 Curio

Available with mirror back or gold
veil back

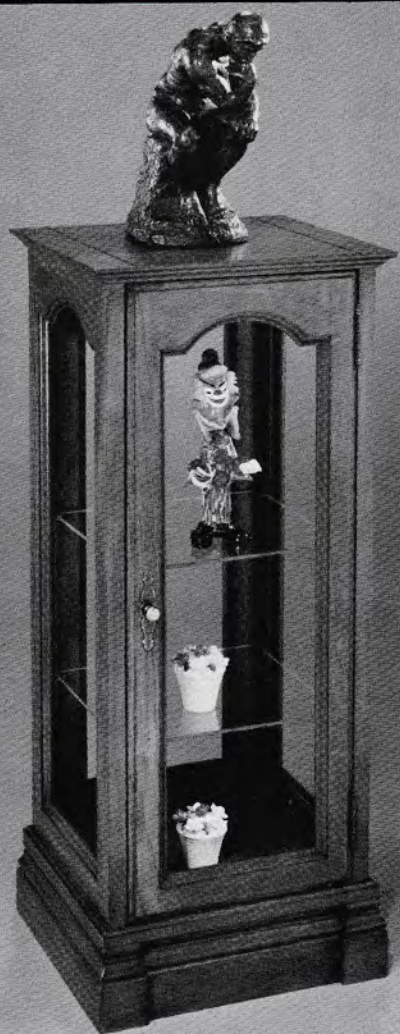


#978 Curio

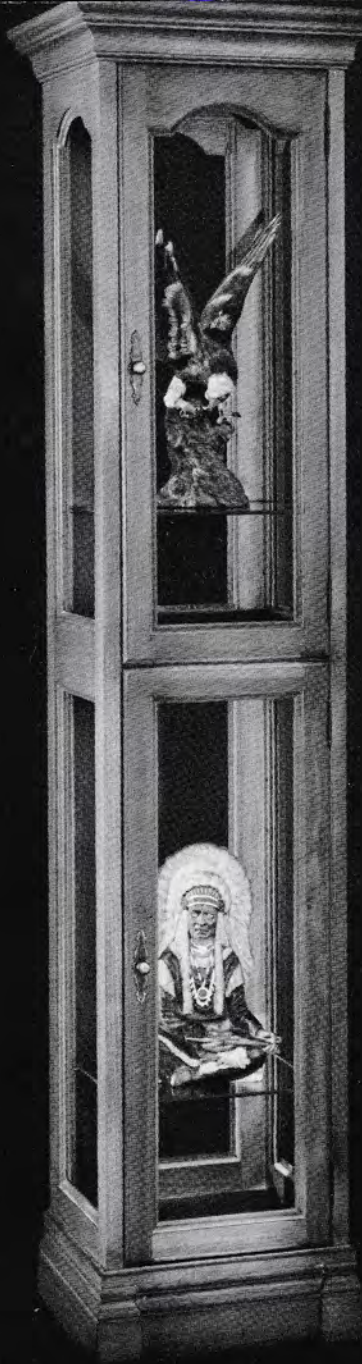


#979 Curio

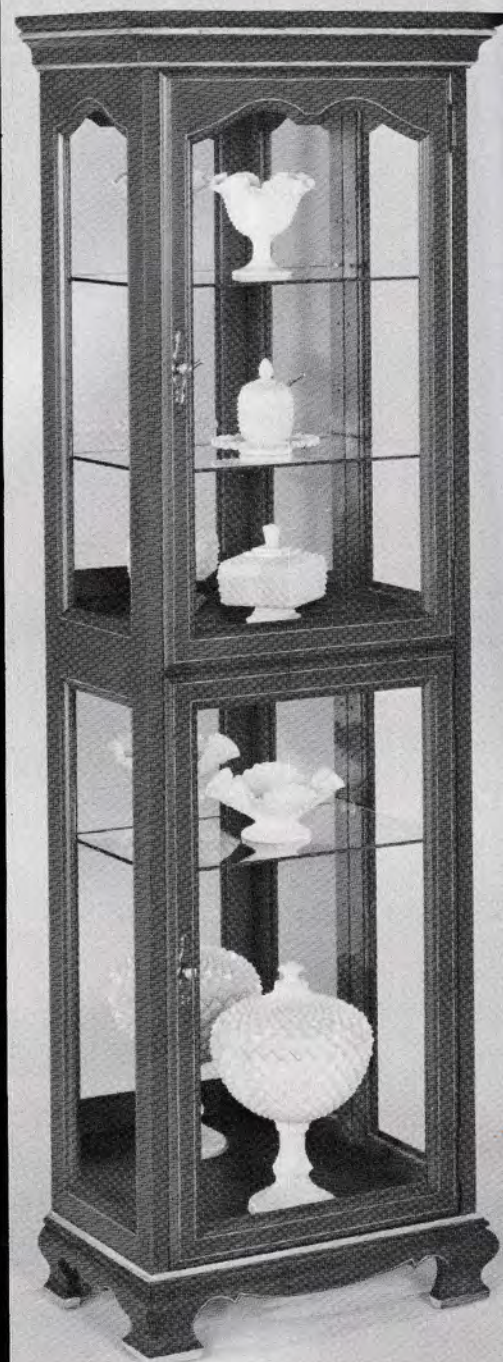
#976 Curio

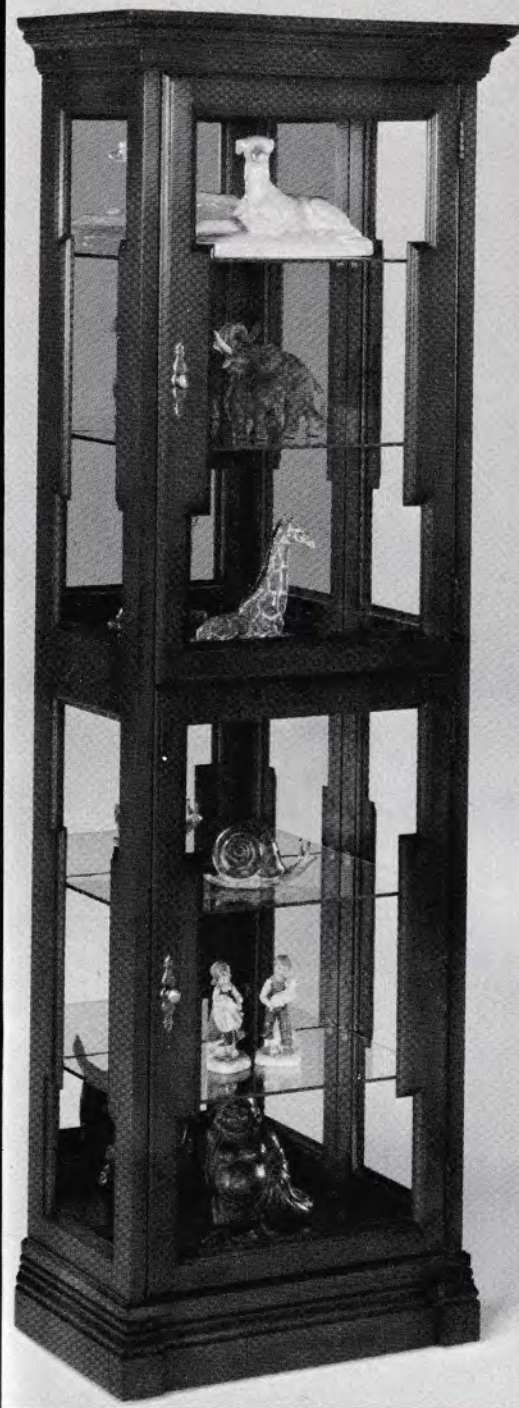


#1000 Curio



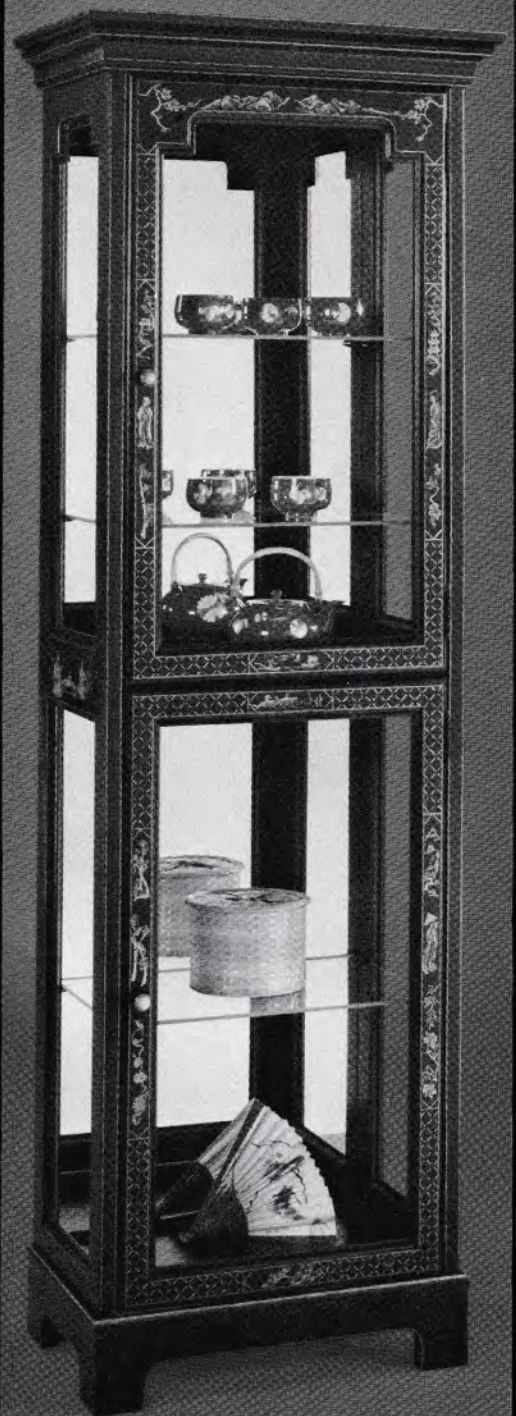
#971 Curio





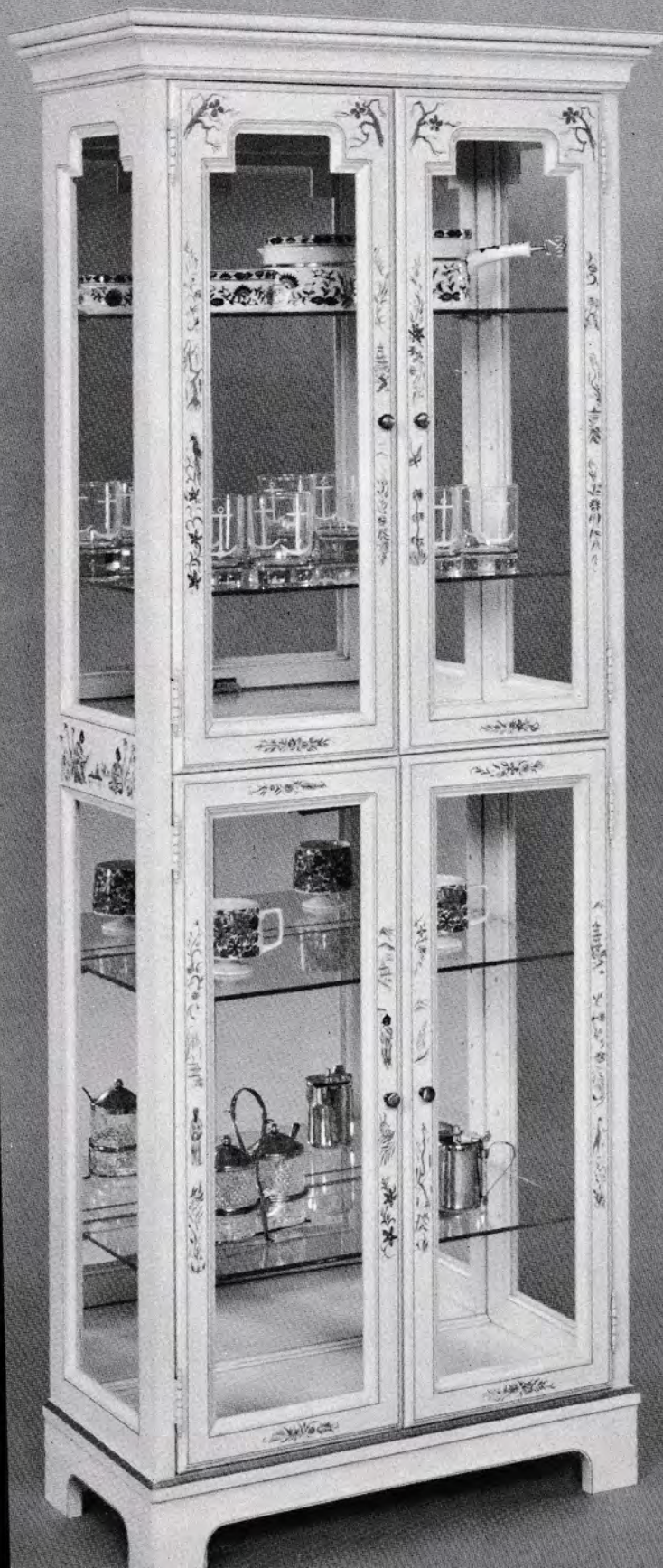
#972 Curio

#973 Curio



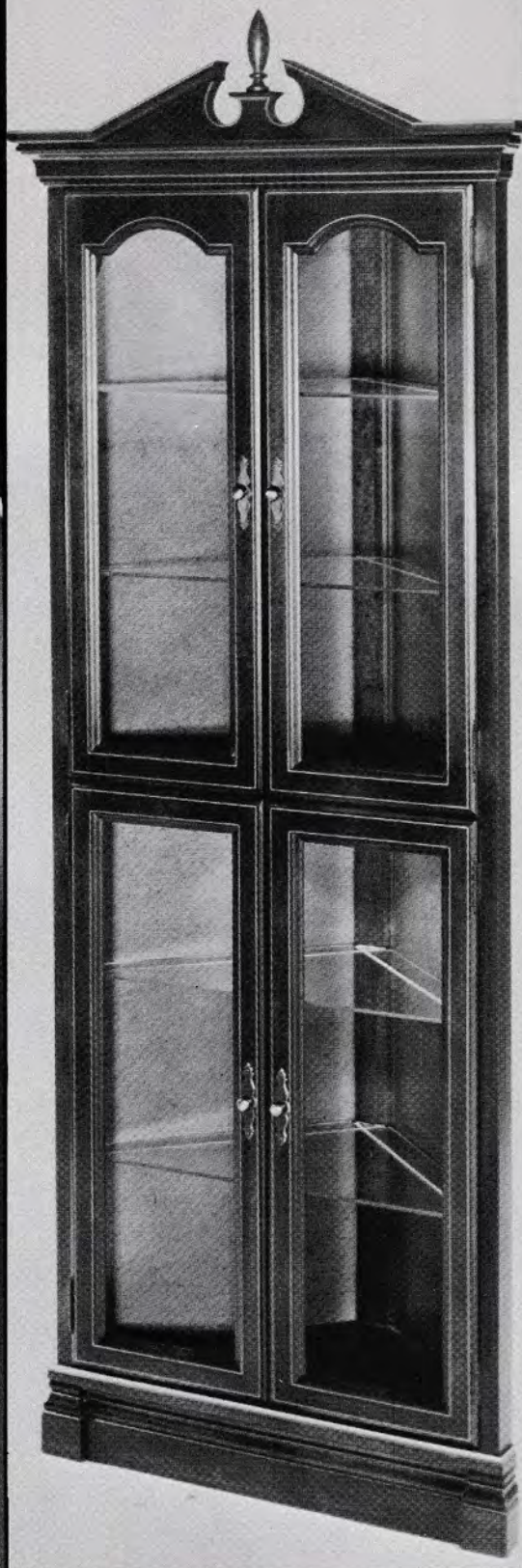
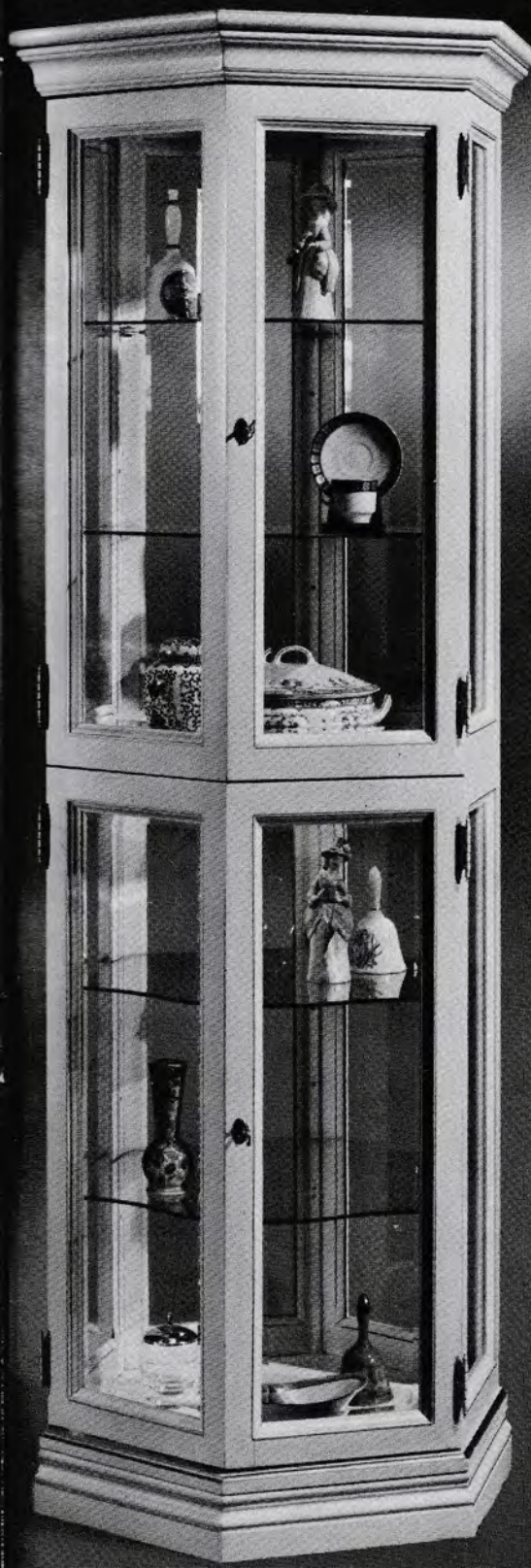
#977 HD4 Curio

#980 HD4 Curio



#987 Octagonal Curio

#991 Octagonal Curio
With beveled glass



#990 H Corner Curio

These as well as almost all of our cabinets are available with the bent arch header

#997HD4 Corner Curio



#988H Secretary



#989 Secretary

These two secretaries can also be ordered with glass sides on the hutch top simply by a suffix **G**.

#982HD12 Curio



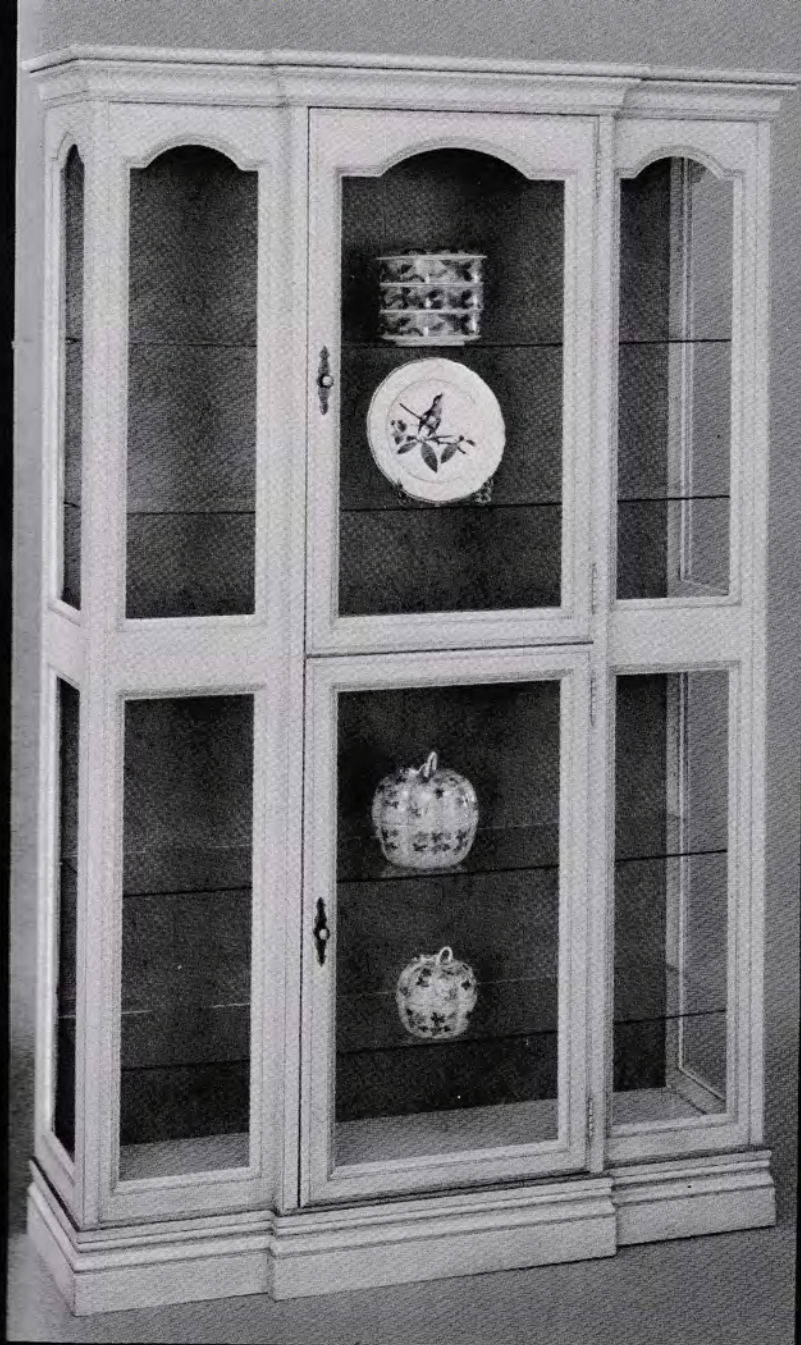
#983 Gun Cabinet



#981HD7 Gun Cabinet

The pheasants on the door of this gun cabinet is just one of the many hand decorated styles offered by Warsaw's fine artists. It is also available in ducks, geese, bears, deer, or any other wildlife the customer may desire, and colonial as in the curio on the preceding page.

The Gun Cabinets and Curio **#981, 982, and 983** can be ordered as a wall unit or grouping in any multiples of 29" in width.



#993 Breakfront Curio

#994HD4 Breakfront Curio





#1003 #1004 Hall Console and Mirror
Shown is the console with hand decorated **HD4** and a solid cherry top

#988½HD6 LoBoy Desk



#989½ LoBoy Desk



Ordering, Shipping and General Information

Some of the cabinets and secretaries in this catalog are shown with the gold accent stripping. All furniture can be ordered with or without the stripping. When ordering please specify stripping. Consult the price list for the accent stripping price.

Pieces expected to match, especially the hand decorated items, must be ordered at the same time. This is true because each hand decorated piece is unique, individually hand painted (we do not use stencils, templates or decals as many others do), and no two pieces of wood are exactly alike. We cannot guarantee an exact match but will make every effort to make a match as closely as is possible.

No piece of genuine wood is flawless. Real wood is alive. It lives and breathes. This is why a door may stick in the summer but not in the winter. We at Warsaw design our furniture to handle the give and take of the variations of temperature and humidity. However, occasionally a piece may not meet our expectations and problems may be encountered at one extreme or the other. Mostly this is a matter of adjustment and we expect the dealer to perform a reasonable amount of service in this area. We, however, will back our guarantee of the best possible quality at the best possible price. You, our customer, must be satisfied.

Our people give special attention to packing and shipping. If damage is found, either refuse to accept or notify the factory by telephone before accepting shipment. All merchandise is shipped FOB Warsaw which means that the factory's responsibility for shipping damage stops when we deliver to the transportation company. It is, however, our policy to guarantee that we indemnify the dealer for any shipping damage loss sustained by the dealer if the dealer makes prompt and timely claims for any damages to the transportation company.

If a particular routing is desired, please specify on the order. When routing instructions are not included, we will ship as we feel best.

When you order from us, give us the item number, include any suffix that may apply and the number and name of the finish. If you specify a particular item as "rush" we will rush that item.

When you are in the area of either Louisville, Kentucky or Cincinnati, Ohio plan to stop in for a visit. Warsaw is located just off I-71 at Mile 57. We would be very happy to show you fine furniture in the making.

Barry Brown
President

#1006HD4½ LoBoy



Here are a few of Warsaw's outstanding finishes.



#108 Cherry



#107 Provincial



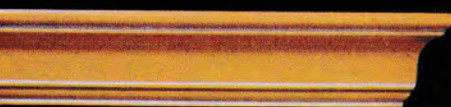
#326 Black



#315 Antique White

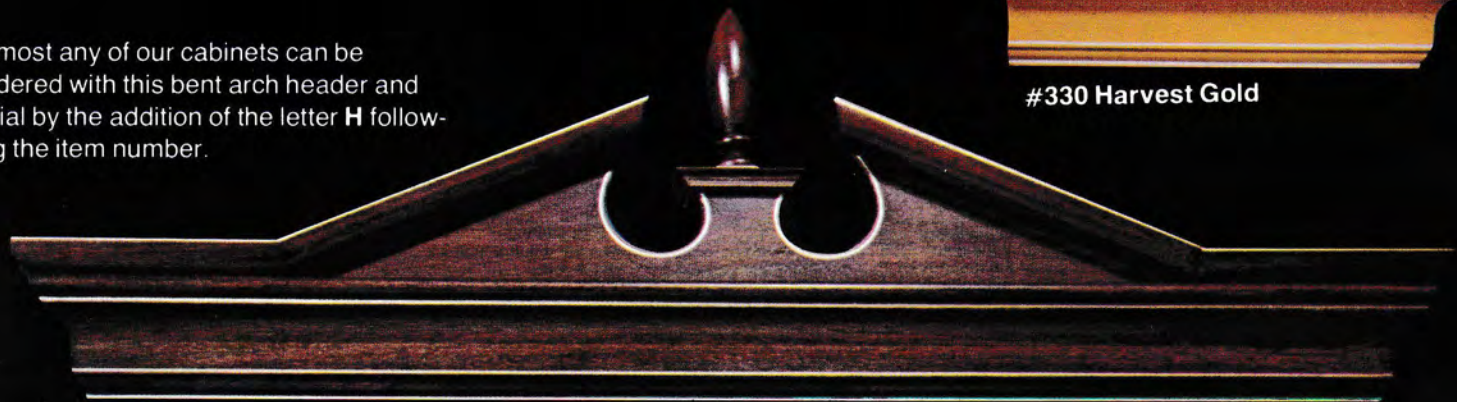


#324 Concord Red



#330 Harvest Gold

Almost any of our cabinets can be ordered with this bent arch header and finial by the addition of the letter **H** following the item number.



These are but a few of our fine hand decorated furniture pieces. The hall console #1003HD in the foreground comes with a matching hand decorated mirror #1004HD. The intricately detailed oriental designs and striping is designated by HD#4.

The gun cabinet is HD#7. The gun cabinets can be hand decorated in any wildlife the customer may desire. The gun cabinet to the right is in Mallard Ducks. Hand decorated means just that, no two are exactly alike. Our artists strive to fulfill every detail.

The curio in our white finish is also an oriental design HD#4. HD after the item number indicates that this is a hand decorated piece of original design that is standard in our line. Our artist can do individualized hand painting on various other pieces in our line. However, prices must be obtained from the factory for this custom work.



WARSAW FURNITURE COMPANY

Warsaw, Kentucky 41095

606-567-7261