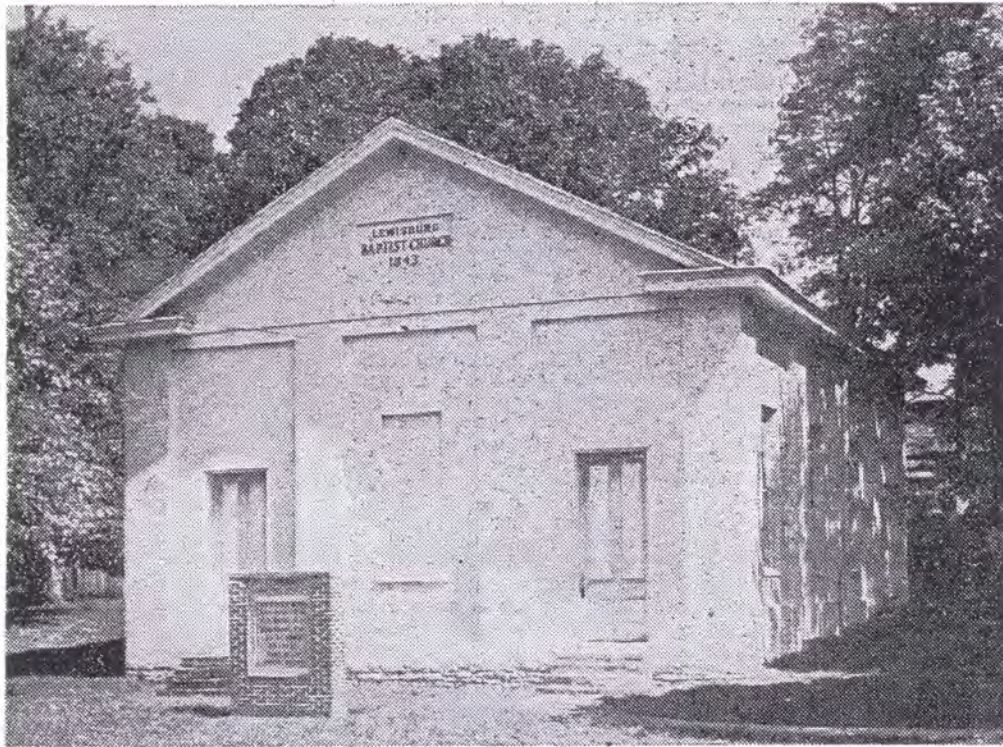


Lex-Her. 7/2/61

HISTORIC KENTUCKY

Photo and Text by J. Winston Coleman Jr.



LEWISBURG BAPTIST CHURCH, MASON COUNTY—On Ky. 11, three-quarters of a mile from Lewisburg and eight miles south of Maysville, stands this old Baptist meeting-house. In October, 1843, Harlow Yancey, Walter Calvert, John Chamberlain, W. S. Forman and 21 members withdrew from the Mays Lick Baptist Church in Mason County and constituted the Lewisburg Baptist Church, a member of the Bracken Association. In that year three acres of ground were purchased from George Chinn for \$65 and the present brick church erected. Elder Charles H. Parker, the first pastor, served for a number of years; he is buried in the side yard of the church. He was followed by Gilbert Mason and Cleon Keyes, who occupied the pulpit of Lewisburg Church for nearly 32 years, July, 1857 to 1889. Some of the church members in the mid-1880s were the Bollingers, Strodes, Burrises, Hawks, Halls, Keyes, Calverts, Marshalls, Mc-

Daniels, Kings, Lashbrooks, Chamberlains, McClellands, Singletons, Steers, McCrackens and Gaithers. Ministers of the latter-day period who have held pastorates at historic Lewisburg Baptist Church include H. S. Searcy, 1899; Lewis N. Thompson, 1910; O. B. Mitchell, 1917; Robert H. Griffin, 1921-1924; J. Frank Estep, 1928-1929; Harry H. Welsh, 1930-1932; Dr. M. B. Adams, former president of Georgetown College, 1932-1935; T. H. Kingston, 1937-1939; Edward Furginson, 1940-1942; Glenn Mearns, 1944-1946; T. M. Browning, 1946-1949; Terrell Durham, 1949-1951; Richard M. Shields, 1952-1954, and O. T. Harmon, the present pastor, since November, 1954. About 140-150 members constitute the present congregation. A large cemetery on the hill behind the church contains the remains of many pioneer families and early members of the church. This ante-bellum Baptist church has changed little during its long life; it still has the original pews, sloping floor and original woodwork.

LIBRARY
KENTUCKY HISTORICAL SOCIETY
P. O. BOX 1792
300 W. BROADWAY
FRANKFORT, KENTUCKY 40602-1792